



TIPS FOR CREATING AN ENGAGING INTERACTIVE EXHIBIT

Use the Three Modes of Learning. People, including teenagers, learn by listening, seeing and touching. An exhibit that incorporates all three will create the most memorable experience.

Always Consider Your Audience. This event is targeted toward teens, ages 14-18. Some have relatively short attention spans and do not like to wait in lines. But they are curious and many are inquisitive.

Avoid Jargon. Avoid too many technical words and terms. If you do use technical terms, make sure you follow them immediately with a clear explanation of what you are describing or doing.

Give Them Something to Touch. Young people like to be physically active in the learning process. Interactive activities are the most memorable to them.

Ask Questions. Keep the learning process interactive by asking students your own questions from time-to-time. What do you think this tool is used for? Do you know anybody with this job – what do they think of it? Ignite their curiosity.

Don't Ignore Students Passing By. While your team works with students, assign one or more people to draw students into your exhibit. Some teenagers are shy and will appreciate a smile and invitation to participate.

Plan Staffing Carefully. This event will draw up to 8,000 students and chaperones over three two-hour sessions. High energy and personable team members are ideal. Showcase your team's diversity.

WE ARE PROVIDING SIGNAGE

Each exhibit will feature a large, elevated banner that lists the occupation, organization(s), highlighting it and their logo(s). Please do not bring your own promotional signage or table skirts.

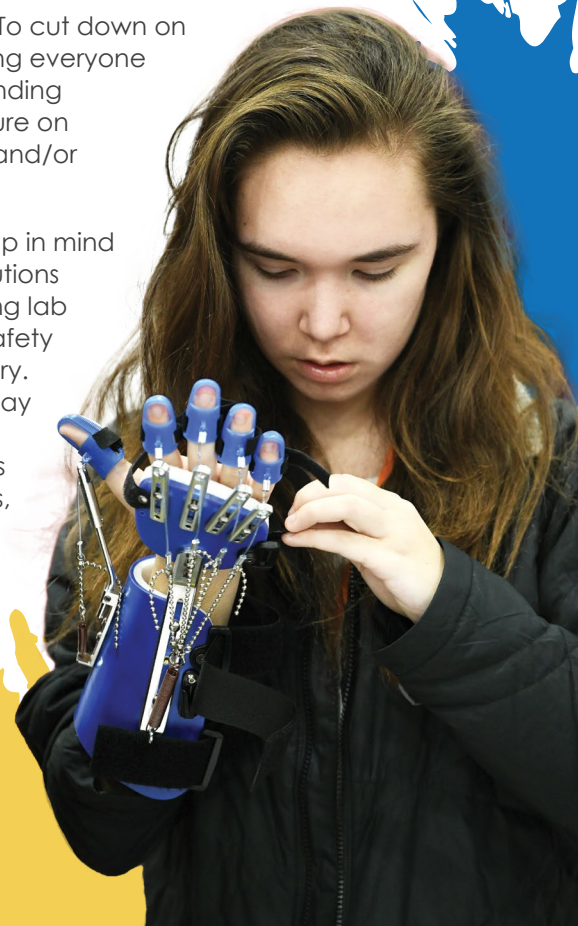
Consider High- and Low-Tech Activities.

Design interactive activities that allow students to experience an important aspect of the job. These can be "high tech" in nature, such as letting them explore with virtual reality headsets, or "low tech" like making virus particles

with marshmallows and tooth picks. More than one activity is ideal.

No Paper Please. To cut down on trash, we are asking everyone to refrain from handing out printed literature on your occupation and/or organization.

Exhibit Safely. Keep in mind any safety precautions for an activity. Bring lab coats, gloves or safety glasses, if necessary. For exhibits that may get messy, bring cleaning materials (e.g. paper towels, trash bags, etc.)



NOV
14
2023

Suburban Collection Showplace
46100 Grand River Ave
Novi, MI 48374

MiCareerQuest™ SOUTHEAST

Helpful Tips for Your Volunteer Staff

- Make sure everyone is well-versed in the exhibit beforehand
- Volunteers should be 18 or older
- Everyone on your team should have a fun, engaging personality and be comfortable working with teenagers
- At least 2-3 people should staff the booth at all times to help with the interactive activities and crowd control
- Have volunteers overlap shifts, so they can observe how others engage students and conduct the activities taking place in your exhibit
- Have enough volunteers for 2-3 hour shifts. If your team is limited in size, have them rotate throughout the day and encourage them to explore other areas of the event to stay fresh

Things You May Want to Bring

- Lozenges or hard candy for those who will be talking all day
- Snacks (water and lunch will be provided)
- Hand sanitizer, Kleenex, cleaning wipes, first aid kit, paper towels
- Business cards to share and a sign-in sheet to capture the names and contact information for interested students

Most importantly – HAVE FUN!

QUESTIONS? CONTACT YOUR PROJECT MANAGER:

Kristi Arnone, Manager, Advanced
Manufacturing and Technology Quadrants
arnonek@oakgov.com | (248) 858-5207

Lynda Keough, Manager,
Health Sciences Quadrant
keoughl@oakgov.com | (248) 452-2262

Sara Wills, Manager, Construction Quadrant
willss@oakgov.com | 248-904-5851

FOR MORE INFORMATION, VISIT:
OakGov.com/MiCareerQuestSE

 MiCareerQuest Southeast



Event Coordination

