



# ECHO Community Health Assessment Executive Summary

## Background and ECHO Introduction

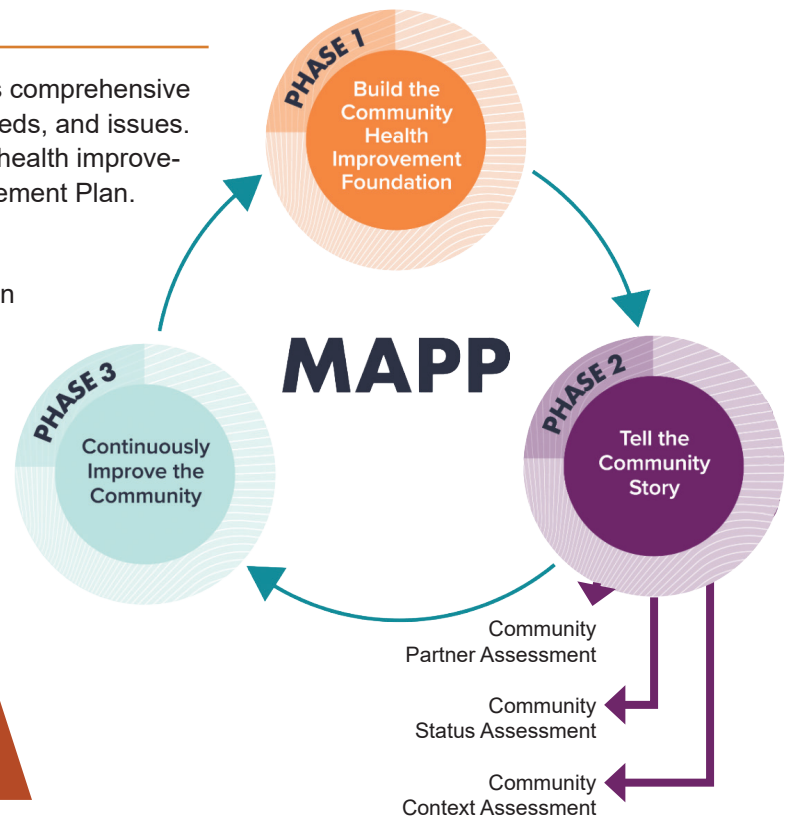
Energizing Connections for Healthier Oakland (ECHO), convened by Oakland County Health Division, identifies health priorities and mobilizes partnerships to improve health outcomes and reduce health inequities in Oakland County. It is overseen by an Advisory Council with representatives from hospitals, human services, behavioral health, higher education, area businesses, parks and recreation, economic development organizations, emergency response, community-based organizations, and elected officials. The ECHO Advisory Council includes organizations that represent the social determinants of health and communities that experience higher burdens of poor health outcomes (See Appendix B for list of Advisory Council members).

ECHO's vision is "Healthy people connected in a thriving and equitable community." The ECHO staff would like to thank everyone who took part in this Community Health Assessment, from partners who guided the process or helped gather data to residents who shared their input. Their input and time have ensured that we have a comprehensive understanding of health and quality of life for all in Oakland County, including those who might not always see themselves represented in research or data collection.

## Community Health Assessment Process

A Community Health Assessment (CHA) gives stakeholders comprehensive information about the community's current health status, needs, and issues. A CHA is typically conducted as part of a larger community health improvement process, which results in a Community Health Improvement Plan.

ECHO uses Mobilizing for Action through Planning and Partnerships (MAPP) developed by the National Association of County and City Health Officials (NACCHO) as the framework to complete its CHA. The goal of MAPP is to achieve health equity by identifying urgent health issues in a community and aligning community resources. MAPP has several steps in its process, including four different assessments that gather a variety of data and information.



Scan to view our full  
Community Health Assessment

## Data Collection

ECHO staff gathered existing data from a variety of sources into a dashboard with community health and quality of life measures. This data also included information about the root causes of health inequities.

ECHO staff also conducted primary data collection to hear resident perspectives and include input from people with lived experience. A community survey was conducted in the summer of 2023, distributed both in person and electronically. It was available in English and the three major languages spoken in the county: Arabic, Chinese, and Spanish. The survey included questions about top health concerns, livability, ability to access healthcare and basic needs, and experiences of discrimination. Survey results are available on an electronic dashboard and the results can be filtered by a number of demographic identities.

Focus groups were also held with population groups that might otherwise be underrepresented in data collection, including people with disabilities, people with substance use disorders, LGBTQ+ residents, residents of color, foreign language speakers, veterans, and immigrants and refugees. Focus group responses were analyzed into themes and quotes from participants were also included in data reports.

The ECHO Advisory Council also assisted in completing assessments that examined the delivery of essential public health services in Oakland County and explored upcoming forces, items, or events that could impact health and quality of life. The information from all these assessments informed the development of potential strategic priorities.

## Prioritization

ECHO staff compiled all assessment-related data into a presentation for the ECHO Advisory Council who then brainstormed possible priority areas based on data collected. ECHO staff then created data briefs related to each strategic priority area and conducted outreach with the Advisory Council, other community partners, and stakeholders. The priorities were ranked from 1 to 8, with 1 being the highest priority to address. ECHO staff brought together a small group of stakeholders to finalize prioritization, discussing issues such as scope of impact and feasibility to address. After conclusion of data collection and analysis for this CHA cycle, major policy shifts at the federal level created a significant threat to access to physical and mental health care for our residents. In collaboration with our trusted community partners, we have included access to care as a priority in our Community Health Improvement Process. The final strategic priorities for the next 5 years of ECHO are:



- **Build more resilient communities through injury and violence prevention.**
- **Improve equitable access to nutritious, affordable, and culturally appropriate food for all Oakland County residents.**
- **Promote and increase access to healthy and affordable housing.**
- **Ensure residents have access to affordable, high-quality physical & mental health care.**

See Appendix A for FINAL Data Briefs.



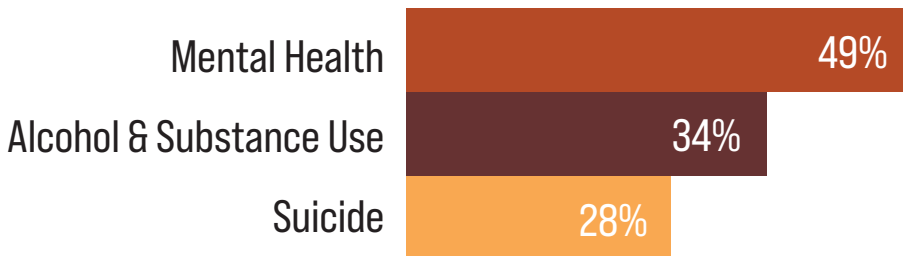
# APPENDIX A

## FINAL DATA BRIEFS

Issue

Build more resilient communities through injury and violence prevention.

Nearly half of ECHO Survey respondents consider mental health “a BIG issue.”



55%

LGBTQ+ survey respondents say mental health is a **BIG issue** (ECHO Survey 2023)

1 in 3

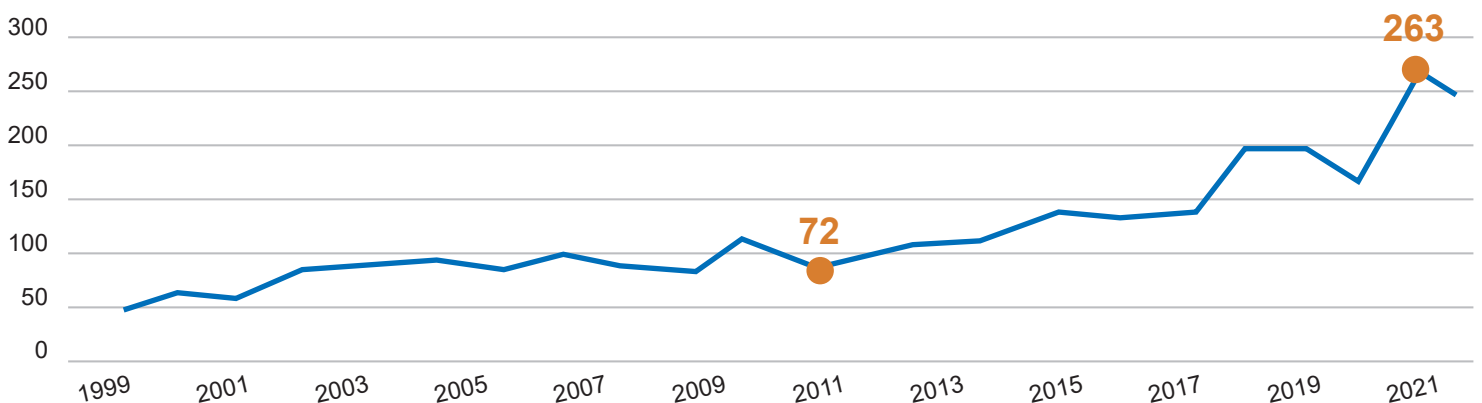
people who tried to access mental health or SUD services had a **hard time accessing services** (ECHO Survey 2023)

Having mental health services in our case in Spanish or in the language that they speak is really important & one of the barriers that we face.

- ECHO Survey Response



From 2011 - 2021, there was a **265% increase** in overdose-related deaths in Oakland County.



Source: MiTracking 1999 - 2021

## Issue

Ensure residents have access to affordable, high-quality physical and mental health care.

ECHO survey respondents in **Health Equity Zones\*** were more likely to **disagree** that their communities have reliable emergency services, are safe, and are a good place to raise kids.



\*Health Equity Zones are areas prioritized for health equity based on demographic, economic, and health-related factors. They include: Hazel Park, Madison Heights, Oak Park, Pontiac, Royal Oak Township, Southfield, Walled Lake, and Wixom.

Black/African American Oakland County residents are **2x** more likely to die from **firearm fatalities** than other racial or ethnic groups.

(National Center for Health Statistics - Mortality Files, 2017 - 2021)

**45%** of Black/African American ECHO survey respondents rated **violence & crime** as a big issue in their community.

I believe that kids should have a safe place in the schools and these shootings, they just upset me so greatly... it's so sad. There is so much tragedy and I just hate to watch the news because it's so upsetting to me. It just hits my heart.

- ECHO Survey Response



## Issue

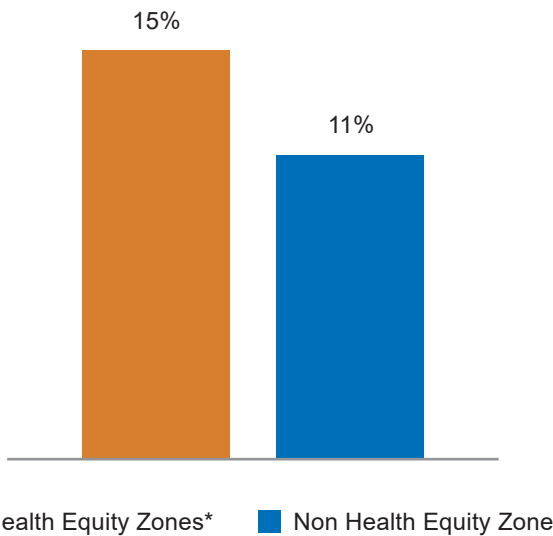
Improve equitable access to nutritious, affordable, and culturally appropriate food for all Oakland County residents.

ECHO survey respondents in **Health Equity Zones\*** were more likely to worry about getting healthy foods.



**11%** of Oakland County households experience food insecurity.

*(Feeding America 2022)*



*\*Health Equity Zones are communities prioritized for health equity using criteria related to health, economy, and demographics. They include Hazel Park, Madison Heights, Oak Park, Pontiac, Royal Oak Township, Southfield, Walled Lake, and Wixom*

**Chronic disease** is the **#1** health concern in the ECHO survey. **50%** of all respondents rated it a **BIG** issue.



**28%** increase in food insecurity in the past year.

*(Feeding America 2022)*

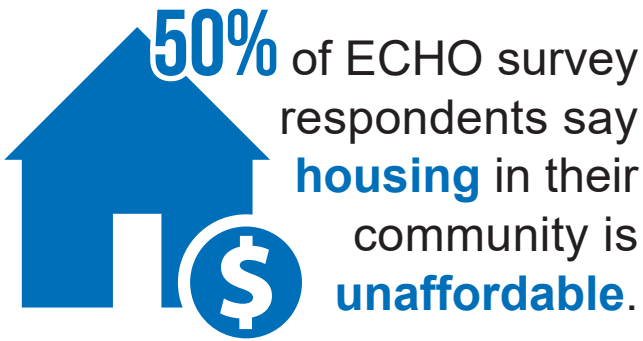
I have a bridge card and \$285 doesn't go very far, especially with the price of food nowadays. Transportation is a problem to stores in town and out of town. Would like to shop at a farmers' market to save money and use food stamps for fresh food.

- ECHO Survey Response

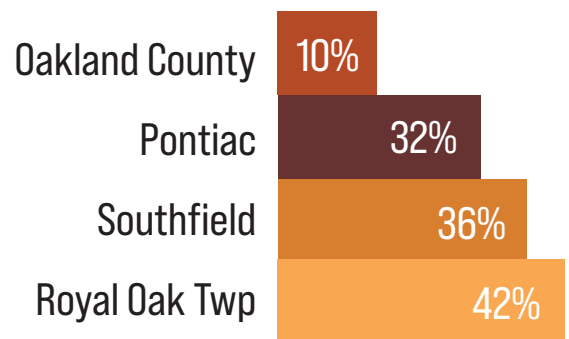


Issue

Promote and increase access to healthy and affordable housing.



Percent of households that spend more than 30% of income on housing:



*\*Source: US Census Bureau ACS 5-year 2018-2022*

There is an extreme lack of affordable housing in Oakland County. You can't be healthy and live well if you can't afford housing.

- ECHO Survey Response



**24 months**

is the average time on a waiting list in Oakland County for **HUD** assisted housing.

*(HUD Picture Subsidized HH 2023)*



**LGTBQ+**

ECHO survey respondents were **2x** more likely to worry about getting or keeping

**safe & stable housing.**



# APPENDIX B

## ECHO MEMBERS

- ACC
- ACCESS
- Affirmations
- AgeWays
- Ascension Michigan
- Corewell Health
- Centro Multicultural La Familia
- Common Ground
- Community Housing Network
- Easterseals Michigan
- Gleaners
- Henry Ford Health -  
*West Bloomfield Hospital*
- Honor Community Health
- HOPE Hospitality & Warming Center
- JARC
- Lighthouse
- McLaren Oakland
- MedNetOne Health Solutions
- Oakland Community Health Network
- Oakland County Child Care Council
- Oakland County Community Affairs
- Oakland County Department of  
Health and Human Services
- Oakland County Planning Division
- Oakland County Homeland Security
- Oakland County Medical Control Authority
- Oakland County Parks & Recreation
- Oakland County Veteran's Services
- Oakland County Workforce  
Development Division
- Oakland County Youth Assistance
- Oakland Family Services
- Oakland Livingston Human  
Service Agency (OLHSA)
- Oakland Schools
- Oakland University
- Pontiac Community Foundation
- SEMCOG Parks and Recreation
- SMART (Suburban Mobility Authority  
for Regional Transportation)
- Trinity Health Oakland
- United Way for Southeastern MI
- YMCA of Metro Detroit



THANK YOU TO OUR ADVISORY  
COUNCIL MEMBERS!