

# OAKLAND COUNTY PARKS

## Spill & Surface Water Pollution Response Call List

In the event of surface water pollution spill event, observations are to be reported using the following phone escalation procedures. When in doubt, report!

<b>24-hour WRC Pollution Hotline – 248-858-0931</b> <ul style="list-style-type: none"> <li>WRC contacts spill coordinators and/or responders</li> <li>WRC contacts Oakland County Health Department on-call staff</li> <li>WRC advises on follow-up calls to EGLE and NRC</li> </ul>		
<b>911 – Fire Chief</b> <ul style="list-style-type: none"> <li>Report nature of spill to surface water, reference call to WRC Pollution Hotline</li> <li>FD will call in county designated HAZMAT teams as necessary</li> </ul>		
<b>Full Time Supervisor and/ or District Chief for the facility</b>		
Glen Oaks	Doug Ammon (Supervisor)	248-343-3379
Parks District Chief	Tom Hughes	248-343-1011
Natural Resources - Freshwater	Eric Dising (Freshwater Coordinator)	248-892-8711
<b>EGLE Pollution Emergency Number (PEAS) -1-800-292-4706</b> <b>NRC – Federal Authorities – 1-800-424-8802</b>		
<b>Waste Water Treatment Plants (WWTPs):</b>		
<u>Waterford Oaks</u>	<u>Glen Oaks and Red Oaks</u>	
Pontiac Waste Water Treatment (248) 857-5695	Detroit Water and Sewerage Department (313) 267-8000	

If Necessary for Extensive Spill Clean-up Contracting Services:

- Marine Pollution Control – 800-521-8232, Blanket Contract No. 002775
- Environmental Recycling Group – 734-437-9650, Blanket Contract No. 002775
- Test America Lab – 810-229-2763

POTENTIAL POLLUTANT	REPORTABLE QUANTITIES		
	SPILL TO GROUND	SPILL TO SURFACE WATERS	SPILL TO SANITARY SEWER
Gas, Diesel, Oil	30 gallons	Any quantity that causes visible sheens, oil films, unnatural turbidity, foams, or deposits in the water feature	Any quantity not currently authorized by receiving WWTP. <u>Contact WWTP Only</u>
Sodium Hypochlorite (wave pools)	63 gallons		
Hydrochloric acid (wave pools)	136 gallons		
Calcium Hypochlorite (wave pools)	3/4 = .75 gallons = 10lbs		
Any other significant material	50 gallons or 50 lbs		

**In the event of a spill, responding staff should adhere to the following Spill Response Procedures:**

**Spill Response Procedure**

1. **Personal safety first!** Operate only within your capabilities and your level of training.
2. Locate and use appropriate Personal Protective Equipment (PPE)
3. Control/Stop the source, if possible
4. Locate the facility Spill Kit (map, below)
5. Contain the spill to a small area using Spill Kit sorbent materials and barriers.
6. Prevent contact with permeable ground, surface waters, storm, and sewer infrastructure.
7. Clean up spill, seek contracted assistance as necessary.
8. Do not use water for containment or clean-up; water can spread or infiltrate the pollutant to ground and surface water resources.
9. Comply with Notification and Reporting Procedures (Page 1). It is better to over-report than to not report at all.
10. **When in doubt, report!** Use *EGLE's generic Spill Release Report* form to record initial notifications.

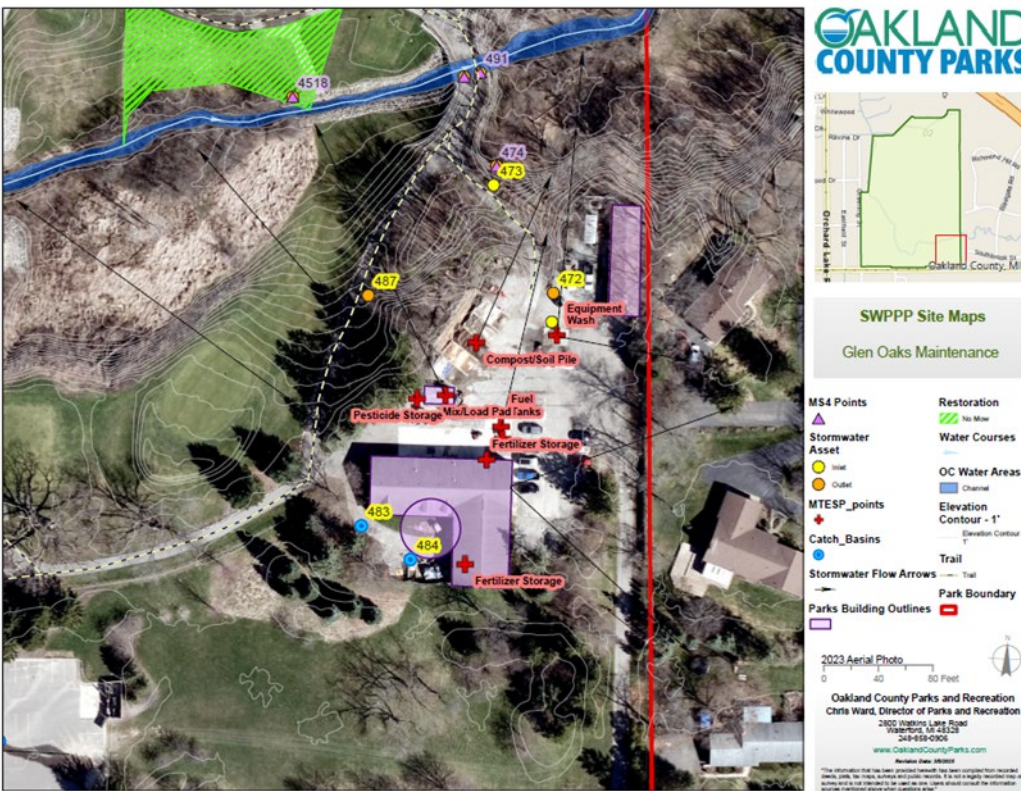
*This procedure applies to all Oakland County Parks properties.*

*Park-specific SPCC, PIPP, and/or SWPPP documents may provide more detailed guidelines.*

**PARK-SPECIFIC FACILITY MAP**

*Map should note locations of spill kit; PPE; vulnerable land/ water resources; storm/ sewer infrastructure; flow direction.*

**Glen Oaks Maintenance Yard**





## Purpose

The purpose of this Spill & Surface Water Pollution Response Call List is to describe how the Oakland County Parks and Recreation (OCPR) staff identifies and responds to Oakland County surface water or ground pollution incidents reported through the Oakland County Water Resource Commissioner's (WRC) 24-hour Pollution Hotline (248-858-0931) and other local and State resources.

## Scope

This procedure applies to all Oakland County Parks surface water or ground pollution incidents reported through the WRC Pollution Hotline and other and other local and State resources.

## Background

OCPR has jurisdiction of more than 6800 acres of land and 1200 acres of open water lakes and associated wetlands and coordinates Federal Phase II Storm Water Permit compliance through the Oakland County WRC. WRC has trained staff available to evaluate surface water pollution complaints and determine proper notification and response. The WRC Pollution Hotline has been operational since 1999 and consists of a 24-hour Pollution Hotline number (248-858-0931) where residents, municipalities and others can call to report surface water pollution in Oakland County.

WRC created this Pollution Hotline to address the County's Phase II Storm Water Permit requirements and because individuals wanting to report surface water pollution in Oakland County were often unclear about how to do so. WRC's Pollution Hotline provides a clearing house for surface water pollution complaints resulting in consistent 24-hour response, or referral as outlined herein.

## Definitions

**Surface Water Pollution** – Any illicit discharge or release of an unnatural substance such as oil, gas, sediment, sanitary sewage and any other polluting material, that causes a visible sheen/film on the water surface, unnatural turbidity, color, foam or deposits, mortality of fish/wildlife or other aquatic organisms, and long/short term threats to the public health and welfare.

The following examples of surface water pollution incidents are commonly reported to the WRC Pollution Hotline:

- Contamination to lakes, rivers, and streams
- Pollution entering a storm sewer or surface water
- Suspicious dumping to drains and/or surface waters
- Suspicious discharges from pipes
- Sewage discharges on the ground or in the surface water
- Large numbers of dead fish
- Failing septic systems
- Construction site soil erosion entering surface waters
- Polluted storm water runoff from storage piles, dumpsters and poor housekeeping practices
- Illegal connections of sanitary sewers to storm sewers or surface waters



# OAKLAND COUNTY PARKS

## Spill & Surface Water Pollution Response Call List

In the event of surface water pollution spill event, observations are to be reported using the following phone escalation procedures. When in doubt, report!

<b>24-hour WRC Pollution Hotline – 248-858-0931</b> <ul style="list-style-type: none"> <li>• WRC contacts spill coordinators and/or responders</li> <li>• WRC contacts Oakland County Health Department on-call staff</li> <li>• WRC advises on follow-up calls to EGLE and NRC</li> </ul>		
<b>911 – Fire Chief</b> <ul style="list-style-type: none"> <li>• Report nature of spill to surface water, reference call to WRC Pollution Hotline</li> <li>• FD will call in county designated HAZMAT teams as necessary</li> </ul>		
<b>Full Time Supervisor and/ or District Chief for the facility</b>		
Groveland Oaks	Jamie Weasel (Supervisor)	248-318-3062
Natural Resources - Freshwater	Eric Diesing (Freshwater Coordinator)	248-892-8711
<b>EGLE Pollution Emergency Number (PEAS) -1-800-292-4706</b> <b>NRC – Federal Authorities – 1-800-424-8802</b>		
<b>Waste Water Treatment Plants (WWTPs):</b>		
<u>Waterford Oaks</u>	<u>Glen Oaks and Red Oaks</u>	
Pontiac Waste Water Treatment (248) 857-5695	Detroit Water and Sewerage Department (313) 267-8000	

If Necessary for Extensive Spill Clean-up Contracting Services:

- Marine Pollution Control – 800-521-8232, Blanket Contract No. 002775
- Environmental Recycling Group – 734-437-9650, Blanket Contract No. 002775
- Test America Lab – 810-229-2763

POTENTIAL POLLUTANT	REPORTABLE QUANTITIES		
	SPILL TO GROUND	SPILL TO SURFACE WATERS	SPILL TO SANITARY SEWER
Gas, Diesel, Oil	30 gallons	Any quantity that causes visible sheens, oil films, unnatural turbidity, foams, or deposits in the water feature	Any quantity not currently authorized by receiving WWTP. <u>Contact WWTP Only</u>
Sodium Hypochlorite (wave pools)	63 gallons		
Hydrochloric acid (wave pools)	136 gallons		
Calcium Hypochlorite (wave pools)	3/4 = .75 gallons = 10lbs		
Any other significant material	50 gallons or 50 lbs		

**In the event of a spill, responding staff should adhere to the following Spill Response Procedures:**

**Spill Response Procedure**

1. **Personal safety first!** Operate only within your capabilities and your level of training.
2. Locate and use appropriate Personal Protective Equipment (PPE)
3. Control/Stop the source, if possible
4. Locate the facility Spill Kit (map, below)
5. Contain the spill to a small area using Spill Kit sorbent materials and barriers.
6. Prevent contact with permeable ground, surface waters, storm, and sewer infrastructure.
7. Clean up spill, seek contracted assistance as necessary.
8. Do not use water for containment or clean-up; water can spread or infiltrate the pollutant to ground and surface water resources.
9. Comply with Notification and Reporting Procedures (Page 1). It is better to over-report than to not report at all.
10. **When in doubt, report!** Use EGLE's generic Spill Release Report form to record initial notifications.

*This procedure applies to all Oakland County Parks properties.*

*Park-specific SPCC, PIPP, and/or SWPPP documents may provide more detailed guidelines.*

**PARK-SPECIFIC FACILITY MAP**

*Map should note locations of spill kit; PPE; vulnerable land/ water resources; storm/ sewer infrastructure; flow direction.*

**Groveland Oaks Maintenance Yard**



## Purpose

The purpose of this Spill & Surface Water Pollution Response Call List is to describe how the Oakland County Parks and Recreation (OCPR) staff identifies and responds to Oakland County surface water or ground pollution incidents reported through the Oakland County Water Resource Commissioner's (WRC) 24-hour Pollution Hotline (248-858-0931) and other local and State resources.

## Scope

This procedure applies to all Oakland County Parks surface water or ground pollution incidents reported through the WRC Pollution Hotline and other and other local and State resources.

## Background

OCPR has jurisdiction of more than 6800 acres of land and 1200 acres of open water lakes and associated wetlands and coordinates Federal Phase II Storm Water Permit compliance through the Oakland County WRC. WRC has trained staff available to evaluate surface water pollution complaints and determine proper notification and response. The WRC Pollution Hotline has been operational since 1999 and consists of a 24-hour Pollution Hotline number (248-858-0931) where residents, municipalities and others can call to report surface water pollution in Oakland County.

WRC created this Pollution Hotline to address the County's Phase II Storm Water Permit requirements and because individuals wanting to report surface water pollution in Oakland County were often unclear about how to do so. WRC's Pollution Hotline provides a clearing house for surface water pollution complaints resulting in consistent 24-hour response, or referral as outlined herein.

## Definitions

**Surface Water Pollution** – Any illicit discharge or release of an unnatural substance such as oil, gas, sediment, sanitary sewage and any other polluting material, that causes a visible sheen/film on the water surface, unnatural turbidity, color, foam or deposits, mortality of fish/wildlife or other aquatic organisms, and long/short term threats to the public health and welfare.

The following examples of surface water pollution incidents are commonly reported to the WRC Pollution Hotline:

- Contamination to lakes, rivers, and streams
- Pollution entering a storm sewer or surface water
- Suspicious dumping to drains and/or surface waters
- Suspicious discharges from pipes
- Sewage discharges on the ground or in the surface water
- Large numbers of dead fish
- Failing septic systems
- Construction site soil erosion entering surface waters
- Polluted storm water runoff from storage piles, dumpsters and poor housekeeping practices
- Illegal connections of sanitary sewers to storm sewers or surface waters



# OAKLAND COUNTY PARKS

## Spill & Surface Water Pollution Response Call List

In the event of surface water pollution spill event, observations are to be reported using the following phone escalation procedures. When in doubt, report!

<b>24-hour WRC Pollution Hotline – 248-858-0931</b> <ul style="list-style-type: none"> <li>WRC contacts spill coordinators and/or responders</li> <li>WRC contacts Oakland County Health Department on-call staff</li> <li>WRC advises on follow-up calls to EGLE and NRC</li> </ul>		
<b>911 – Fire Chief</b> <ul style="list-style-type: none"> <li>Report nature of spill to surface water, reference call to WRC Pollution Hotline</li> <li>FD will call in county designated HAZMAT teams as necessary</li> </ul>		
<b>Full Time Supervisor and/ or District Chief for the facility</b>		
Independence Oaks	Jeremy Brown (Supervisor)	248-326-4900
Natural Resources - Freshwater	Eric Diesing (Freshwater Coordinator)	248-892-8711
<b>EGLE Pollution Emergency Number (PEAS) -1-800-292-4706</b> <b>NRC – Federal Authorities – 1-800-424-8802</b>		
<b>Waste Water Treatment Plants (WWTPs):</b>		
<u>Waterford Oaks</u>	<u>Glen Oaks and Red Oaks</u>	
Pontiac Waste Water Treatment (248) 857-5695	Detroit Water and Sewerage Department (313) 267-8000	

If Necessary for Extensive Spill Clean-up Contracting Services:

- Marine Pollution Control – 800-521-8232, Blanket Contract No. 002775
- Environmental Recycling Group – 734-437-9650, Blanket Contract No. 002775
- Test America Lab – 810-229-2763

POTENTIAL POLLUTANT	REPORTABLE QUANTITIES		
	SPILL TO GROUND	SPILL TO SURFACE WATERS	SPILL TO SANITARY SEWER
Gas, Diesel, Oil	30 gallons	Any quantity that causes visible sheens, oil films, unnatural turbidity, foams, or deposits in the water feature	Any quantity not currently authorized by receiving WWTP. <u>Contact WWTP Only</u>
Sodium Hypochlorite (wave pools)	63 gallons		
Hydrochloric acid (wave pools)	136 gallons		
Calcium Hypochlorite (wave pools)	3/4 = .75 gallons = 10lbs		
Any other significant material	50 gallons or 50 lbs		

**In the event of a spill, responding staff should adhere to the following Spill Response Procedures:**

**Spill Response Procedure**

1. **Personal safety first!** Operate only within your capabilities and your level of training.
2. Locate and use appropriate Personal Protective Equipment (PPE)
3. Control/Stop the source, if possible
4. Locate the facility Spill Kit (map, below)
5. Contain the spill to a small area using Spill Kit sorbent materials and barriers.
6. Prevent contact with permeable ground, surface waters, storm, and sewer infrastructure.
7. Clean up spill, seek contracted assistance as necessary.
8. Do not use water for containment or clean-up; water can spread or infiltrate the pollutant to ground and surface water resources.
9. Comply with Notification and Reporting Procedures (Page 1). It is better to over-report than to not report at all.
10. **When in doubt, report!** Use EGLE's generic Spill Release Report form to record initial notifications.

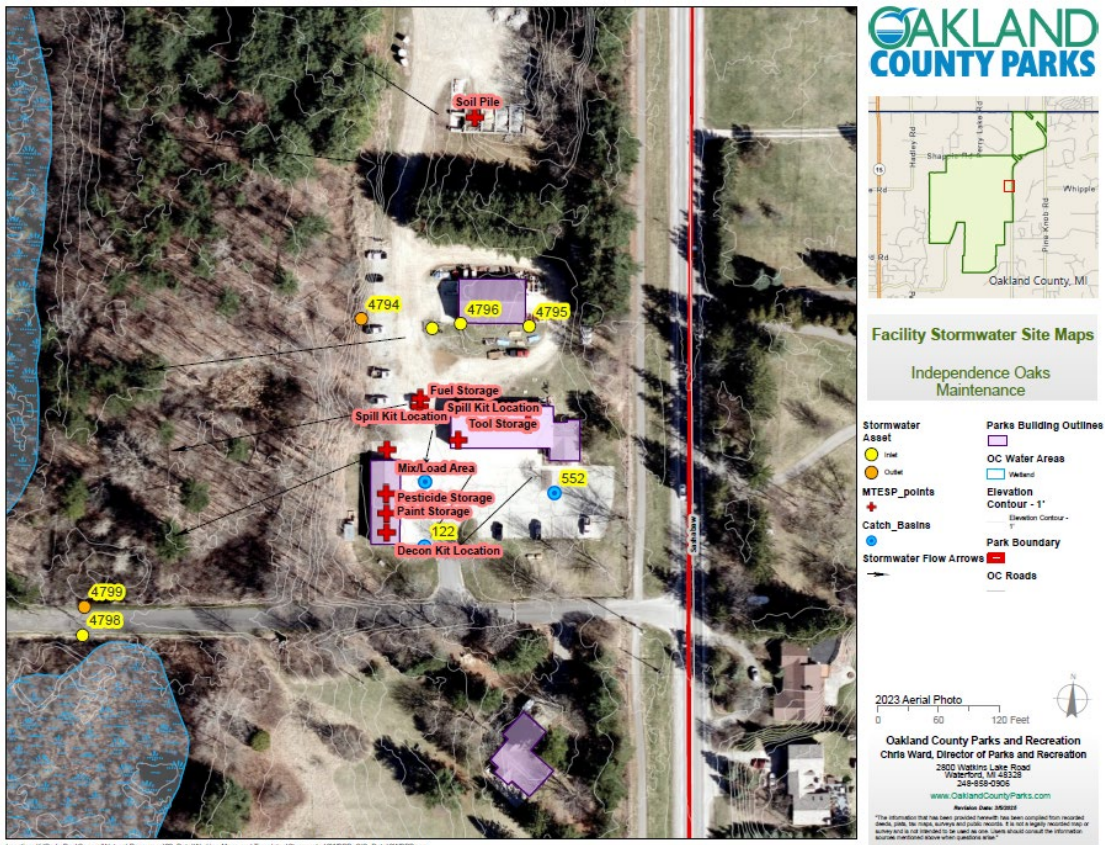
*This procedure applies to all Oakland County Parks properties.*

*Park-specific SPCC, PIPP, and/or SWPPP documents may provide more detailed guidelines.*

**PARK-SPECIFIC FACILITY MAP**

*Map should note locations of spill kit; PPE; vulnerable land/ water resources; storm/ sewer infrastructure; flow direction.*

**Independence Oaks Maintenance Yard**



## Purpose

The purpose of this Spill & Surface Water Pollution Response Call List is to describe how the Oakland County Parks and Recreation (OCPR) staff identifies and responds to Oakland County surface water or ground pollution incidents reported through the Oakland County Water Resource Commissioner's (WRC) 24-hour Pollution Hotline (248-858-0931) and other local and State resources.

## Scope

This procedure applies to all Oakland County Parks surface water or ground pollution incidents reported through the WRC Pollution Hotline and other and other local and State resources.

## Background

OCPR has jurisdiction of more than 6800 acres of land and 1200 acres of open water lakes and associated wetlands and coordinates Federal Phase II Storm Water Permit compliance through the Oakland County WRC. WRC has trained staff available to evaluate surface water pollution complaints and determine proper notification and response. The WRC Pollution Hotline has been operational since 1999 and consists of a 24-hour Pollution Hotline number (248-858-0931) where residents, municipalities and others can call to report surface water pollution in Oakland County.

WRC created this Pollution Hotline to address the County's Phase II Storm Water Permit requirements and because individuals wanting to report surface water pollution in Oakland County were often unclear about how to do so. WRC's Pollution Hotline provides a clearing house for surface water pollution complaints resulting in consistent 24-hour response, or referral as outlined herein.

## Definitions

**Surface Water Pollution** – Any illicit discharge or release of an unnatural substance such as oil, gas, sediment, sanitary sewage and any other polluting material, that causes a visible sheen/film on the water surface, unnatural turbidity, color, foam or deposits, mortality of fish/wildlife or other aquatic organisms, and long/short term threats to the public health and welfare.

The following examples of surface water pollution incidents are commonly reported to the WRC Pollution Hotline:

- Contamination to lakes, rivers, and streams
- Pollution entering a storm sewer or surface water
- Suspicious dumping to drains and/or surface waters
- Suspicious discharges from pipes
- Sewage discharges on the ground or in the surface water
- Large numbers of dead fish
- Failing septic systems
- Construction site soil erosion entering surface waters
- Polluted storm water runoff from storage piles, dumpsters and poor housekeeping practices
- Illegal connections of sanitary sewers to storm sewers or surface waters



# OAKLAND COUNTY PARKS

## Spill & Surface Water Pollution Response Call List

In the event of a surface water pollution spill event, observations are to be reported using the following phone escalation procedures. When in doubt, report!

<b>24-hour WRC Pollution Hotline – 248-858-0931</b> <ul style="list-style-type: none"> <li>• WRC contacts spill coordinators and/or responders</li> <li>• WRC contacts Oakland County Health Department on-call staff</li> <li>• WRC advises on follow-up calls to EGLE and NRC</li> </ul>		
<b>911 – Fire Chief</b> <ul style="list-style-type: none"> <li>• Report nature of spill to surface water, reference call to WRC Pollution Hotline</li> <li>• FD will call in county designated HAZMAT teams as necessary</li> </ul>		
<b>Full Time Supervisor and/ or District Chief for the facility</b>		
Lyon Oaks	Shayne Skolnik (Grounds Maint. Sup)	248-202-9770
Natural Resources - Freshwater	Eric Diesing (Freshwater Coordinator)	248-892-8711
<b>EGLE Pollution Emergency Number (PEAS) -1-800-292-4706</b> <b>NRC – Federal Authorities – 1-800-424-8802</b>		
<b>Waste Water Treatment Plants (WWTPs):</b>		
<u>Waterford Oaks</u>	<u>Glen Oaks and Red Oaks</u>	
Pontiac Waste Water Treatment (248) 857-5695	Detroit Water and Sewerage Department (313) 267-8000	

If Necessary for Extensive Spill Clean-up Contracting Services:

- Marine Pollution Control – 800-521-8232, Blanket Contract No. 002775
- Environmental Recycling Group – 734-437-9650, Blanket Contract No. 002775
- Test America Lab – 810-229-2763

POTENTIAL POLLUTANT	REPORTABLE QUANTITIES		
	SPILL TO GROUND	SPILL TO SURFACE WATERS	SPILL TO SANITARY SEWER
Gas, Diesel, Oil	30 gallons	Any quantity that causes visible sheens, oil films, unnatural turbidity, foams, or deposits in the water feature	Any quantity not currently authorized by receiving WWTP. <u>Contact WWTP Only</u>
Sodium Hypochlorite (wave pools)	63 gallons		
Hydrochloric acid (wave pools)	136 gallons		
Calcium Hypochlorite (wave pools)	3/4 = .75 gallons = 10lbs		
Any other significant material	50 gallons or 50 lbs		

**In the event of a spill, responding staff should adhere to the following Spill Response Procedures:**

**Spill Response Procedure**

1. **Personal safety first!** Operate only within your capabilities and your level of training.
2. Locate and use appropriate Personal Protective Equipment (PPE)
3. Control/Stop the source, if possible
4. Locate the facility Spill Kit (map, below)
5. Contain the spill to a small area using Spill Kit sorbent materials and barriers.
6. Prevent contact with permeable ground, surface waters, storm, and sewer infrastructure.
7. Clean up spill, seek contracted assistance as necessary.
8. Do not use water for containment or clean-up; water can spread or infiltrate the pollutant to ground and surface water resources.
9. Comply with Notification and Reporting Procedures (Page 1). It is better to over-report than to not report at all.
10. **When in doubt, report!** Use EGLE's generic Spill Release Report form to record initial notifications.

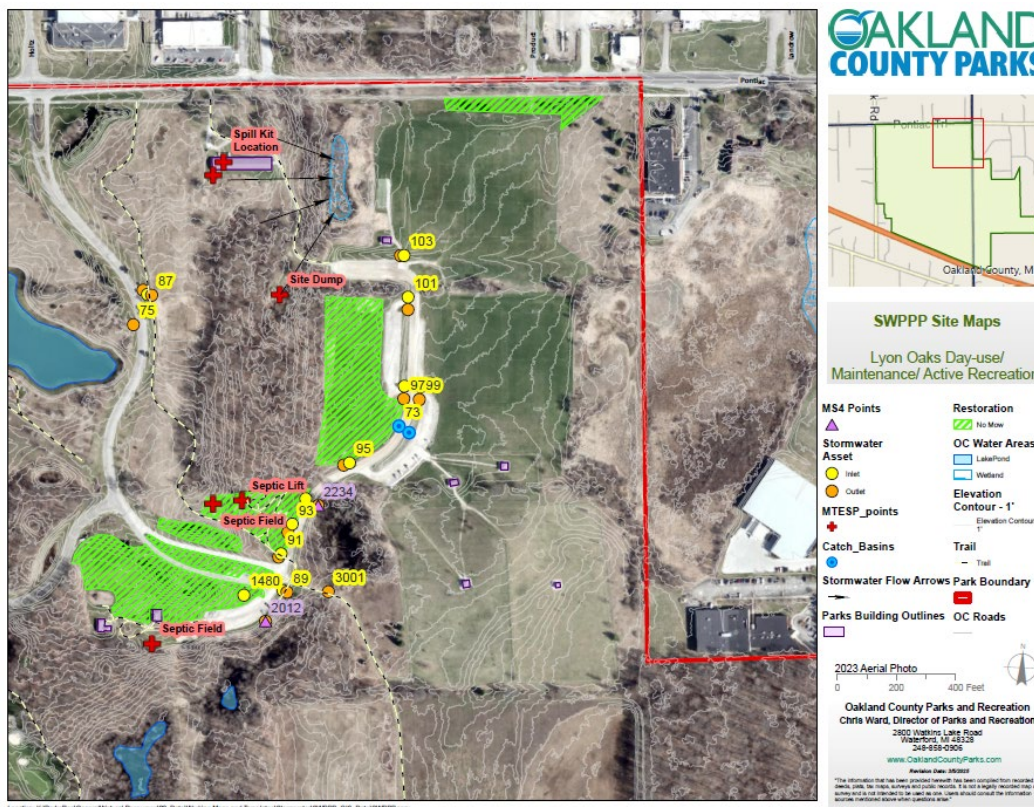
*This procedure applies to all Oakland County Parks properties.*

*Park-specific SPCC, PIPP, and/or SWPPP documents may provide more detailed guidelines.*

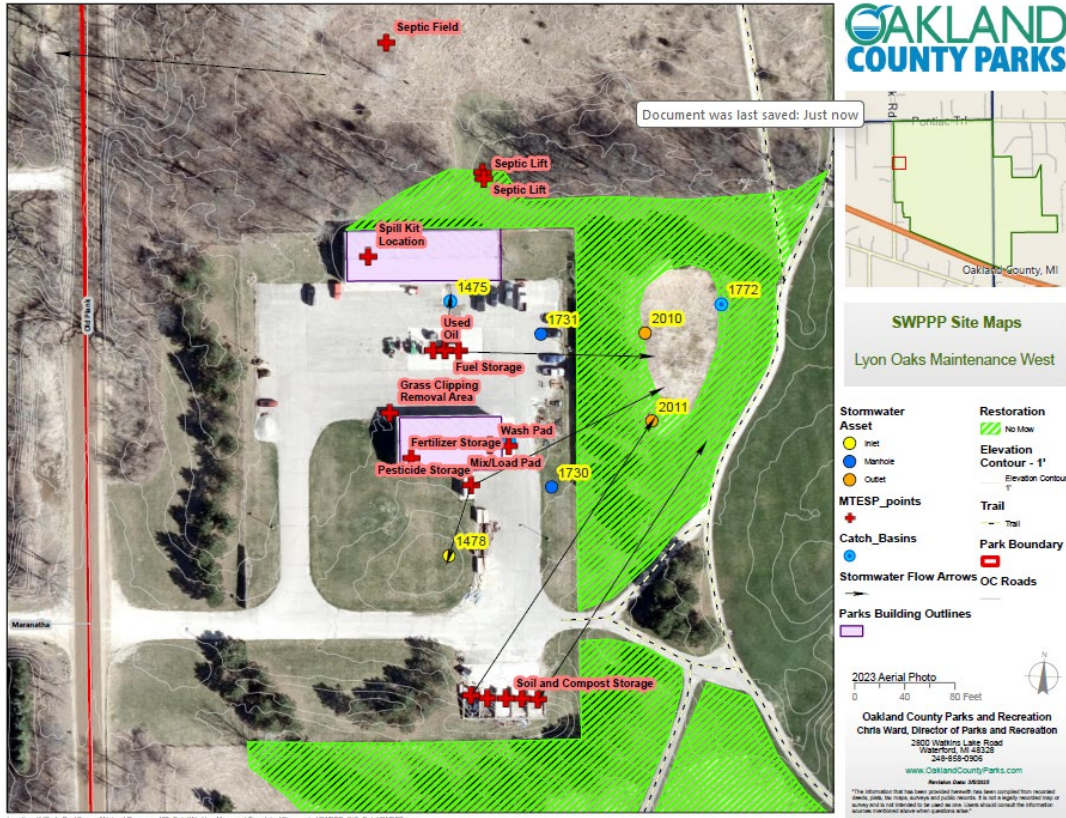
**PARK-SPECIFIC FACILITY MAP**

*Map should note locations of spill kit; PPE; vulnerable land/ water resources; storm/ sewer infrastructure; flow direction.*

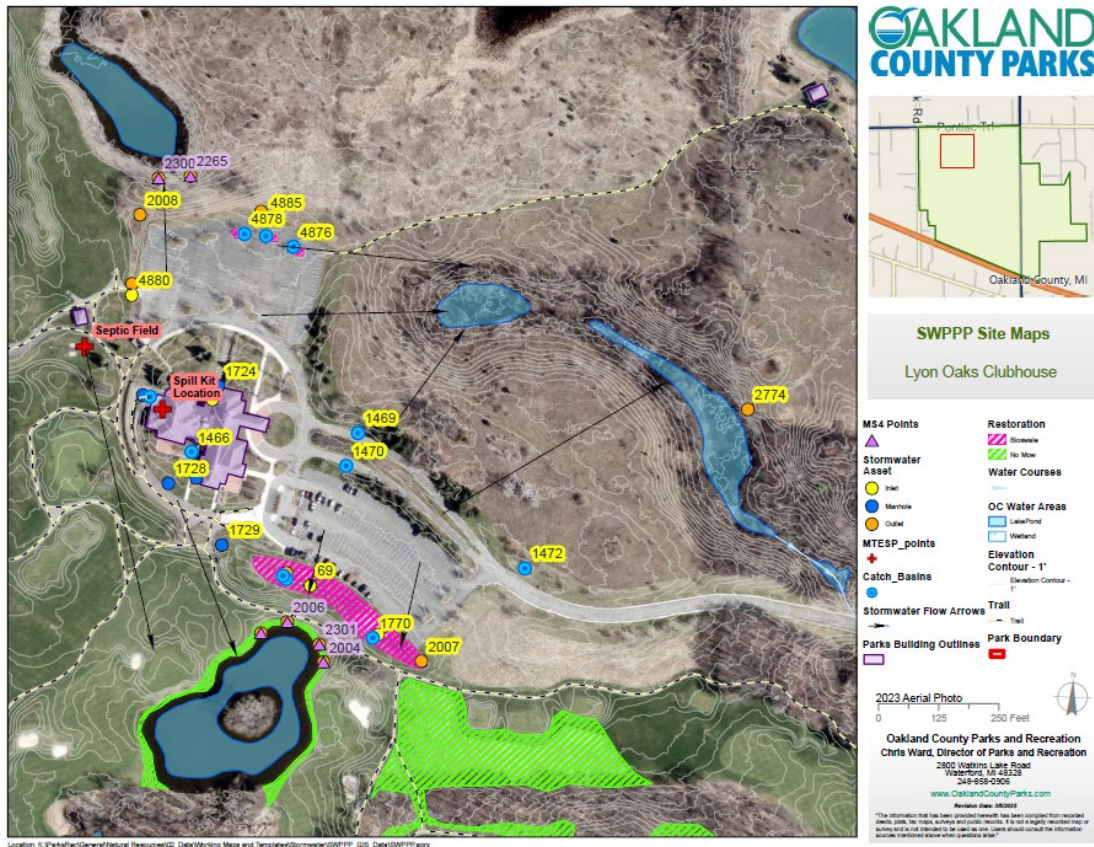
**Lyon Oaks Maintenance Yard East**



# Lyon Oaks Maintenance Yard West



# Lyon Oaks Clubhouse



## Purpose

The purpose of this Spill & Surface Water Pollution Response Call List is to describe how the Oakland County Parks and Recreation (OCPR) staff identifies and responds to Oakland County surface water or ground pollution incidents reported through the Oakland County Water Resource Commissioner's (WRC) 24-hour Pollution Hotline (248-858-0931) and other local and State resources.

## Scope

This procedure applies to all Oakland County Parks surface water or ground pollution incidents reported through the WRC Pollution Hotline and other and other local and State resources.

## Background

OCPR has jurisdiction of more than 6800 acres of land and 1200 acres of open water lakes and associated wetlands and coordinates Federal Phase II Storm Water Permit compliance through the Oakland County WRC. WRC has trained staff available to evaluate surface water pollution complaints and determine proper notification and response. The WRC Pollution Hotline has been operational since 1999 and consists of a 24-hour Pollution Hotline number (248-858-0931) where residents, municipalities and others can call to report surface water pollution in Oakland County.

WRC created this Pollution Hotline to address the County's Phase II Storm Water Permit requirements and because individuals wanting to report surface water pollution in Oakland County were often unclear about how to do so. WRC's Pollution Hotline provides a clearing house for surface water pollution complaints resulting in consistent 24-hour response, or referral as outlined herein.

## Definitions

**Surface Water Pollution** – Any illicit discharge or release of an unnatural substance such as oil, gas, sediment, sanitary sewage and any other polluting material, that causes a visible sheen/film on the water surface, unnatural turbidity, color, foam or deposits, mortality of fish/wildlife or other aquatic organisms, and long/short term threats to the public health and welfare.

The following examples of surface water pollution incidents are commonly reported to the WRC Pollution Hotline:

- Contamination to lakes, rivers, and streams
- Pollution entering a storm sewer or surface water
- Suspicious dumping to drains and/or surface waters
- Suspicious discharges from pipes
- Sewage discharges on the ground or in the surface water
- Large numbers of dead fish
- Failing septic systems
- Construction site soil erosion entering surface waters
- Polluted storm water runoff from storage piles, dumpsters and poor housekeeping practices
- Illegal connections of sanitary sewers to storm sewers or surface waters



# OAKLAND COUNTY PARKS

## Spill & Surface Water Pollution Response Call List

In the event of surface water pollution spill event, observations are to be reported using the following phone escalation procedures. When in doubt, report!

<b>24-hour WRC Pollution Hotline – 248-858-0931</b> <ul style="list-style-type: none"> <li>• WRC contacts spill coordinators and/or responders</li> <li>• WRC contacts Oakland County Health Department on-call staff</li> <li>• WRC advises on follow-up calls to EGLE and NRC</li> </ul>		
<b>911 – Fire Chief</b> <ul style="list-style-type: none"> <li>• Report nature of spill to surface water, reference call to WRC Pollution Hotline</li> <li>• FD will call in county designated HAZMAT teams as necessary</li> </ul>		
<b>Full Time Supervisor and/ or District Chief for the facility</b>		
Red Oaks	Matt Parady (Supervisor)	248-467-6401
Natural Resources - Freshwater	Eric Diesing (Freshwater Coordinator)	248-892-8711
<b>EGLE Pollution Emergency Number (PEAS) -1-800-292-4706</b> <b>NRC – Federal Authorities – 1-800-424-8802</b>		
<b>Waste Water Treatment Plants (WWTPs):</b>		
<u>Waterford Oaks</u>	<u>Glen Oaks and Red Oaks</u>	
Pontiac Waste Water Treatment (248) 857-5695	Detroit Water and Sewerage Department (313) 267-8000	

If Necessary for Extensive Spill Clean-up Contracting Services:

- Marine Pollution Control – 800-521-8232, Blanket Contract No. 002775
- Environmental Recycling Group – 734-437-9650, Blanket Contract No. 002775
- Test America Lab – 810-229-2763

POTENTIAL POLLUTANT	REPORTABLE QUANTITIES		
	SPILL TO GROUND	SPILL TO SURFACE WATERS	SPILL TO SANITARY SEWER
Gas, Diesel, Oil	30 gallons	Any quantity that causes visible sheens, oil films, unnatural turbidity, foams, or deposits in the water feature	Any quantity not currently authorized by receiving WWTP. <u>Contact WWTP Only</u>
Sodium Hypochlorite (wave pools)	63 gallons		
Hydrochloric acid (wave pools)	136 gallons		
Calcium Hypochlorite (wave pools)	3/4 = .75 gallons = 10lbs		
Any other significant material	50 gallons or 50 lbs		

**In the event of a spill, responding staff should adhere to the following Spill Response Procedures:**

**Spill Response Procedure**

1. **Personal safety first!** Operate only within your capabilities and your level of training.
2. Locate and use appropriate Personal Protective Equipment (PPE)
3. Control/Stop the source, if possible
4. Locate the facility Spill Kit (map, below)
5. Contain the spill to a small area using Spill Kit sorbent materials and barriers.
6. Prevent contact with permeable ground, surface waters, storm, and sewer infrastructure.
7. Clean up spill, seek contracted assistance as necessary.
8. Do not use water for containment or clean-up; water can spread or infiltrate the pollutant to ground and surface water resources.
9. Comply with Notification and Reporting Procedures (Page 1). It is better to over-report than to not report at all.
10. **When in doubt, report!** Use EGLE's generic Spill Release Report form to record initial notifications.

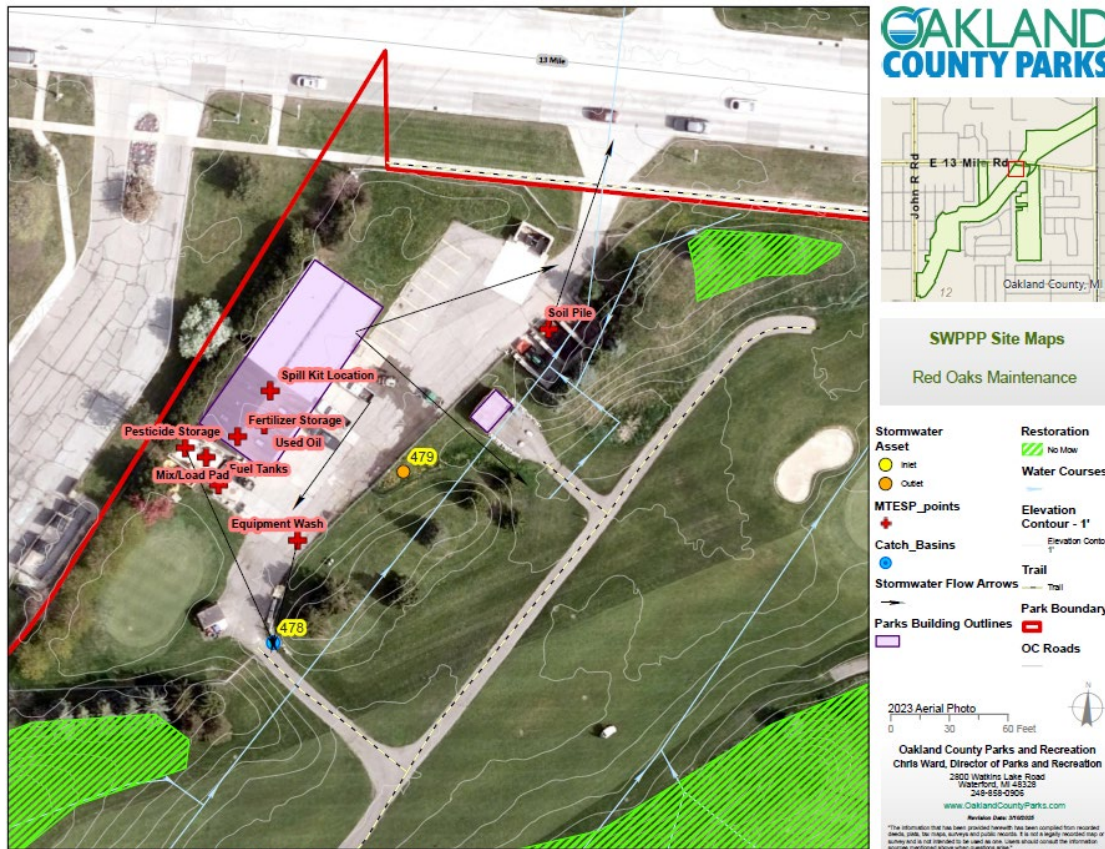
*This procedure applies to all Oakland County Parks properties.*

*Park-specific SPCC, PIPP, and/or SWPPP documents may provide more detailed guidelines.*

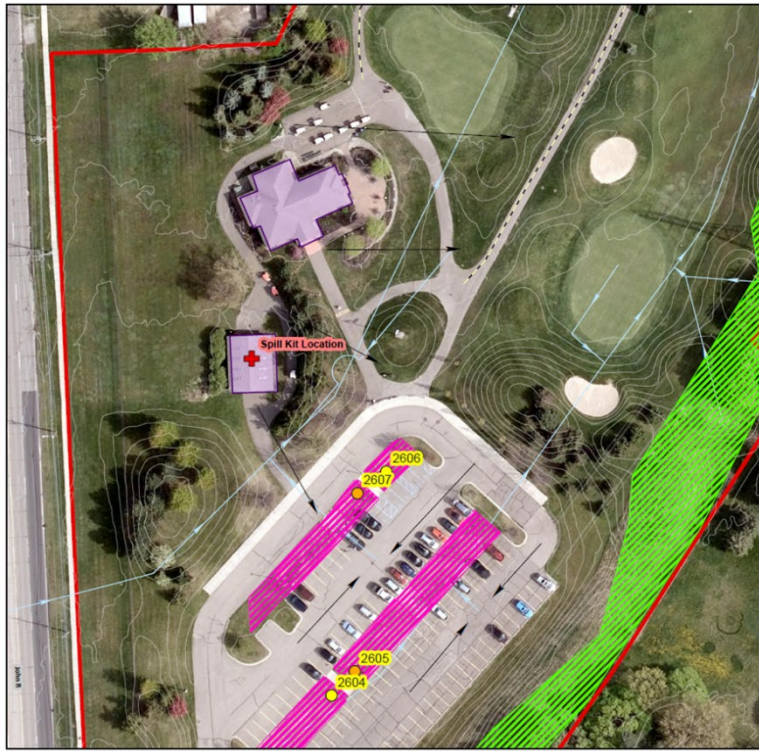
**PARK-SPECIFIC FACILITY MAP**

*Map should note locations of spill kit; PPE; vulnerable land/ water resources; storm/ sewer infrastructure; flow direction.*

**Red Oaks Maintenance Yard**



# Red Oaks Clubhouse



## SWPPP Site Maps Red Oaks Clubhouse

<b>Stormwater Asset</b>	<b>Water Courses</b>
● Inlet	Elevation Contour - 1'
● Outlet	Elevation Contour - 1'
<b>MTESP_points</b>	Trail
+	- Trail
<b>Stormwater Flow Arrows</b>	<b>Park Boundary</b>
→	—
<b>Parks Building Outlines</b>	<b>OC Roads</b>
▭	—
<b>Restoration</b>	
▨ Bioswale	
▨ No Mow	

2023 Aerial Photo

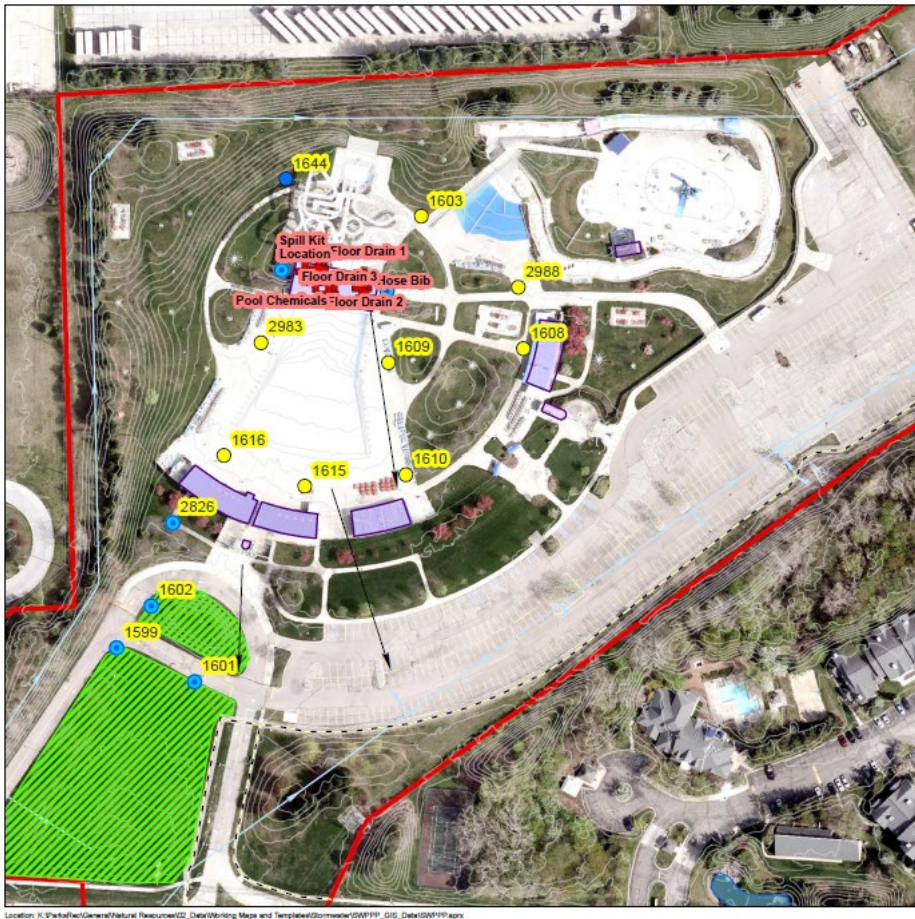
0 40 80 Feet

Oakland County Parks and Recreation  
Chris Ward, Director of Parks and Recreation  
2800 Wiggins Lake Road  
Waterford, MI 48323  
248-858-0906  
www.OaklandCountyParks.com

Revision Date: 06/2023

\*The information that has been provided herein has been compiled from recorded plans, maps, field notes, and other records. It is not a legally recorded map or survey and is not intended to be used as one. Users should consult the information source responsible for the original data.

# Red Oaks Waterpark



## SWPPP Site Maps Red Oaks Waterpark

<b>Stormwater Asset</b>	<b>Restoration</b>
● Inlet	▨ No Mow
● Manhole	<b>Water Courses</b>
<b>MTESP_points</b>	OC Water Areas
+	▭ Lake/Pond
<b>Catch_Basins</b>	Elevation Contour - 1'
●	Elevation Contour - 1'
<b>Stormwater Flow Arrows</b>	Trail
→	- Trail
<b>Parks Building Outlines</b>	<b>Park Boundary</b>
▭	—

2023 Aerial Photo

0 80 160 Feet

Oakland County Parks and Recreation  
Chris Ward, Director of Parks and Recreation  
2800 Wiggins Lake Road  
Waterford, MI 48323  
248-858-0906  
www.OaklandCountyParks.com

Revision Date: 06/2023

\*The information that has been provided herein has been compiled from recorded plans, maps, field notes, and other records. It is not a legally recorded map or survey and is not intended to be used as one. Users should consult the information source responsible for the original data.

## Purpose

The purpose of this Spill & Surface Water Pollution Response Call List is to describe how the Oakland County Parks and Recreation (OCPR) staff identifies and responds to Oakland County surface water or ground pollution incidents reported through the Oakland County Water Resource Commissioner's (WRC) 24-hour Pollution Hotline (248-858-0931) and other local and State resources.

## Scope

This procedure applies to all Oakland County Parks surface water or ground pollution incidents reported through the WRC Pollution Hotline and other and other local and State resources.

## Background

OCPR has jurisdiction of more than 6800 acres of land and 1200 acres of open water lakes and associated wetlands and coordinates Federal Phase II Storm Water Permit compliance through the Oakland County WRC. WRC has trained staff available to evaluate surface water pollution complaints and determine proper notification and response. The WRC Pollution Hotline has been operational since 1999 and consists of a 24-hour Pollution Hotline number (248-858-0931) where residents, municipalities and others can call to report surface water pollution in Oakland County.

WRC created this Pollution Hotline to address the County's Phase II Storm Water Permit requirements and because individuals wanting to report surface water pollution in Oakland County were often unclear about how to do so. WRC's Pollution Hotline provides a clearing house for surface water pollution complaints resulting in consistent 24-hour response, or referral as outlined herein.

## Definitions

**Surface Water Pollution** – Any illicit discharge or release of an unnatural substance such as oil, gas, sediment, sanitary sewage and any other polluting material, that causes a visible sheen/film on the water surface, unnatural turbidity, color, foam or deposits, mortality of fish/wildlife or other aquatic organisms, and long/short term threats to the public health and welfare.

The following examples of surface water pollution incidents are commonly reported to the WRC Pollution Hotline:

- Contamination to lakes, rivers, and streams
- Pollution entering a storm sewer or surface water
- Suspicious dumping to drains and/or surface waters
- Suspicious discharges from pipes
- Sewage discharges on the ground or in the surface water
- Large numbers of dead fish
- Failing septic systems
- Construction site soil erosion entering surface waters
- Polluted storm water runoff from storage piles, dumpsters and poor housekeeping practices
- Illegal connections of sanitary sewers to storm sewers or surface waters



# OAKLAND COUNTY PARKS

## Spill & Surface Water Pollution Response Call List

In the event of surface water pollution spill event, observations are to be reported using the following phone escalation procedures. When in doubt, report!

<b>24-hour WRC Pollution Hotline – 248-858-0931</b> <ul style="list-style-type: none"> <li>WRC contacts spill coordinators and/or responders</li> <li>WRC contacts Oakland County Health Department on-call staff</li> <li>WRC advises on follow-up calls to EGLE and NRC</li> </ul>		
<b>911 – Fire Chief</b> <ul style="list-style-type: none"> <li>Report nature of spill to surface water, reference call to WRC Pollution Hotline</li> <li>FD will call in county designated HAZMAT teams as necessary</li> </ul>		
<b>Full Time Supervisor and/ or District Chief for the facility</b>		
Springfield Oaks	Steve Whaley (Grounds Maint. Sup)	248-622-8141
Natural Resources - Freshwater	Eric Diesing (Freshwater Coordinator)	248-892-8711
<b>EGLE Pollution Emergency Number (PEAS) -1-800-292-4706</b> <b>NRC – Federal Authorities – 1-800-424-8802</b>		
<b>Waste Water Treatment Plants (WWTPs):</b>		
<u>Waterford Oaks</u>	<u>Glen Oaks and Red Oaks</u>	
Pontiac Waste Water Treatment (248) 857-5695	Detroit Water and Sewerage Department (313) 267-8000	

If Necessary for Extensive Spill Clean-up Contracting Services:

- Marine Pollution Control – 800-521-8232, Blanket Contract No. 002775
- Environmental Recycling Group – 734-437-9650, Blanket Contract No. 002775
- Test America Lab – 810-229-2763

POTENTIAL POLLUTANT	REPORTABLE QUANTITIES		
	SPILL TO GROUND	SPILL TO SURFACE WATERS	SPILL TO SANITARY SEWER
Gas, Diesel, Oil	30 gallons	Any quantity that causes visible sheens, oil films, unnatural turbidity, foams, or deposits in the water feature	Any quantity not currently authorized by receiving WWTP. <u>Contact WWTP Only</u>
Sodium Hypochlorite (wave pools)	63 gallons		
Hydrochloric acid (wave pools)	136 gallons		
Calcium Hypochlorite (wave pools)	3/4 = .75 gallons = 10lbs		
Any other significant material	50 gallons or 50 lbs		

**In the event of a spill, responding staff should adhere to the following Spill Response Procedures:**

**Spill Response Procedure**

1. **Personal safety first!** Operate only within your capabilities and your level of training.
2. Locate and use appropriate Personal Protective Equipment (PPE)
3. Control/Stop the source, if possible
4. Locate the facility Spill Kit (map, below)
5. Contain the spill to a small area using Spill Kit sorbent materials and barriers.
6. Prevent contact with permeable ground, surface waters, storm, and sewer infrastructure.
7. Clean up spill, seek contracted assistance as necessary.
8. Do not use water for containment or clean-up; water can spread or infiltrate the pollutant to ground and surface water resources.
9. Comply with Notification and Reporting Procedures (Page 1). It is better to over-report than to not report at all.
10. **When in doubt, report!** Use *EGLE's generic Spill Release Report* form to record initial notifications.

*This procedure applies to all Oakland County Parks properties.*

*Park-specific SPCC, PIPP, and/or SWPPP documents may provide more detailed guidelines.*

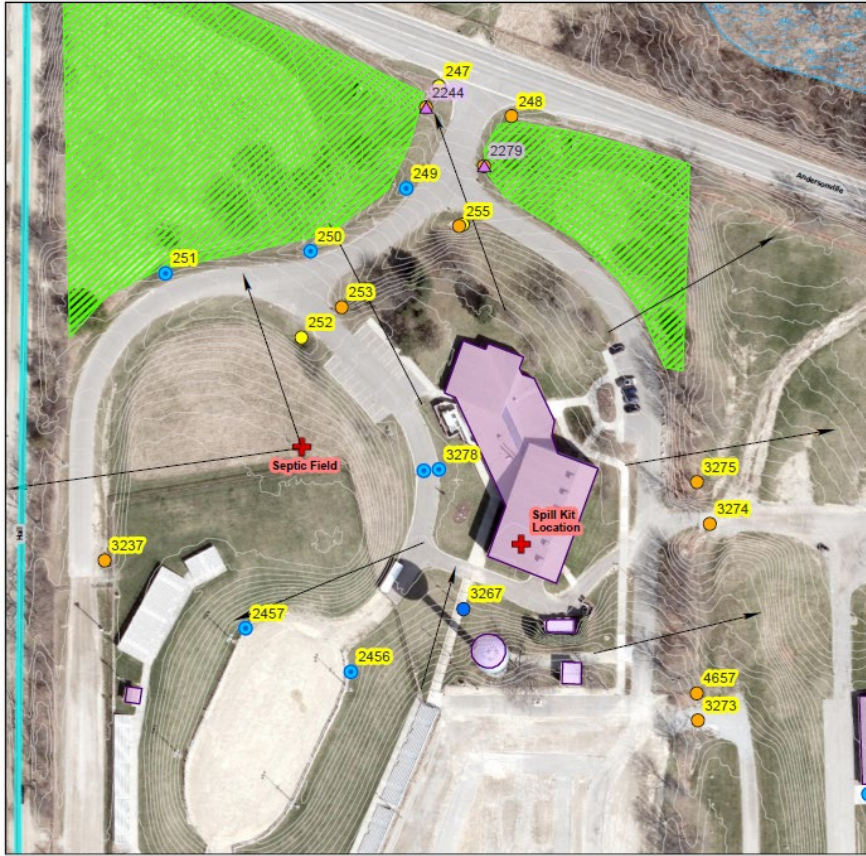
**PARK-SPECIFIC FACILITY MAP**

*Map should note locations of spill kit; PPE; vulnerable land/ water resources; storm/ sewer infrastructure; flow direction.*

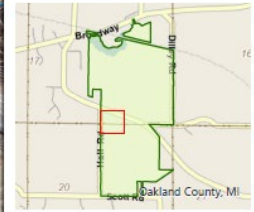
**Springfield Oaks Maintenance Yard**



# Springfield Oaks Activity Center



Location: K:\ParkInfo\General\Natural Resources\GIS\_Data\Working Maps and Templates\Stormwater\GWPPP\_GIS\_Data\GWPPP.aprx



## Facility Stormwater Site Maps Springfield Oaks Activity Center

- |                          |                                |
|--------------------------|--------------------------------|
| <b>MS4 Points</b>        | <b>Parks Building Outlines</b> |
| ▲ Stormwater Asset       | ■ Restoration                  |
| ● Inlet                  | ■ No Mow                       |
| ● Manhole                | ■ OC Water Areas               |
| ● Outlet                 | ■ Wetland                      |
| ● MTESP_points           | — Elevation Contour - 1'       |
| ● Catch Basins           | — Elevation Contour - 5'       |
| → Stormwater Flow Arrows | ■ Park Boundary                |
|                          | — OC Roads                     |

2023 Aerial Photo

0 60 120 Feet

Oakland County Parks and Recreation  
Chris Ward, Director of Parks and Recreation  
2800 Watkins Lake Road  
Warren, MI 48093  
248-658-0305  
www.OaklandCountyParks.com

Revision Date: 3/10/2023

\*The information that has been provided herewith has been compiled from recorded plans, maps, reports and public records. It is not a legally recorded map or survey and is not intended to be used as such. Users should consult the information source mentioned above when conducting a map.

# Springfield Oaks Green 16



Location: K:\ParkInfo\General\Natural Resources\GIS\_Data\Working Maps and Templates\Stormwater\GWPPP\_GIS\_Data\GWPPP.aprx



## Facility Stormwater Site Maps Springfield Oaks Green #16

- |                           |                          |
|---------------------------|--------------------------|
| <b>Stormwater Asset</b>   | <b>OC Water Areas</b>    |
| ● Inlet                   | ■ Lake/Pond              |
| ● Outlet                  | ■ Wetland                |
| ● MTESP_points            | — Elevation Contour - 1' |
| ●                         | — Elevation Contour - 5' |
| → Stormwater Flow Arrows  | — Trail                  |
| ■ Parks Building Outlines | ■ Park Boundary          |
| — Water Courses           | — OC Roads               |

2023 Aerial Photo

0 60 120 Feet

Oakland County Parks and Recreation  
Chris Ward, Director of Parks and Recreation  
2800 Watkins Lake Road  
Warren, MI 48093  
248-658-0305  
www.OaklandCountyParks.com

Revision Date: 3/10/2023

\*The information that has been provided herewith has been compiled from recorded plans, maps, reports and public records. It is not a legally recorded map or survey and is not intended to be used as such. Users should consult the information source mentioned above when conducting a map.

## Purpose

The purpose of this Spill & Surface Water Pollution Response Call List is to describe how the Oakland County Parks and Recreation (OCPR) staff identifies and responds to Oakland County surface water or ground pollution incidents reported through the Oakland County Water Resource Commissioner's (WRC) 24-hour Pollution Hotline (248-858-0931) and other local and State resources.

## Scope

This procedure applies to all Oakland County Parks surface water or ground pollution incidents reported through the WRC Pollution Hotline and other and other local and State resources.

## Background

OCPR has jurisdiction of more than 6800 acres of land and 1200 acres of open water lakes and associated wetlands and coordinates Federal Phase II Storm Water Permit compliance through the Oakland County WRC. WRC has trained staff available to evaluate surface water pollution complaints and determine proper notification and response. The WRC Pollution Hotline has been operational since 1999 and consists of a 24-hour Pollution Hotline number (248-858-0931) where residents, municipalities and others can call to report surface water pollution in Oakland County.

WRC created this Pollution Hotline to address the County's Phase II Storm Water Permit requirements and because individuals wanting to report surface water pollution in Oakland County were often unclear about how to do so. WRC's Pollution Hotline provides a clearing house for surface water pollution complaints resulting in consistent 24-hour response, or referral as outlined herein.

## Definitions

**Surface Water Pollution** – Any illicit discharge or release of an unnatural substance such as oil, gas, sediment, sanitary sewage and any other polluting material, that causes a visible sheen/film on the water surface, unnatural turbidity, color, foam or deposits, mortality of fish/wildlife or other aquatic organisms, and long/short term threats to the public health and welfare.

The following examples of surface water pollution incidents are commonly reported to the WRC Pollution Hotline:

- Contamination to lakes, rivers, and streams
- Pollution entering a storm sewer or surface water
- Suspicious dumping to drains and/or surface waters
- Suspicious discharges from pipes
- Sewage discharges on the ground or in the surface water
- Large numbers of dead fish
- Failing septic systems
- Construction site soil erosion entering surface waters
- Polluted storm water runoff from storage piles, dumpsters and poor housekeeping practices
- Illegal connections of sanitary sewers to storm sewers or surface waters



# OAKLAND COUNTY PARKS

## Spill & Surface Water Pollution Response Call List

In the event of surface water pollution spill event, observations are to be reported using the following phone escalation procedures. When in doubt, report!

<b>24-hour WRC Pollution Hotline – 248-858-0931</b> <ul style="list-style-type: none"> <li>WRC contacts spill coordinators and/or responders</li> <li>WRC contacts Oakland County Health Department on-call staff</li> <li>WRC advises on follow-up calls to EGLE and NRC</li> </ul>		
<b>911 – Fire Chief</b> <ul style="list-style-type: none"> <li>Report nature of spill to surface water, reference call to WRC Pollution Hotline</li> <li>FD will call in county designated HAZMAT teams as necessary</li> </ul>		
<b>Full Time Supervisor and/ or District Chief for the facility</b>		
Waterford Oaks	Matt Parady (Supervisor)	248-467-6401
Natural Resources - Freshwater	Eric Diesing (Freshwater Coordinator)	248-892-8711
<b>EGLE Pollution Emergency Number (PEAS) -1-800-292-4706</b> <b>NRC – Federal Authorities – 1-800-424-8802</b>		
<b>Waste Water Treatment Plants (WWTPs):</b>		
<u>Waterford Oaks</u>	<u>Glen Oaks and Red Oaks</u>	
Pontiac Waste Water Treatment (248) 857-5695	Detroit Water and Sewerage Department (313) 267-8000	

If Necessary for Extensive Spill Clean-up Contracting Services:

- Marine Pollution Control – 800-521-8232, Blanket Contract No. 002775
- Environmental Recycling Group – 734-437-9650, Blanket Contract No. 002775
- Test America Lab – 810-229-2763

POTENTIAL POLLUTANT	REPORTABLE QUANTITIES		
	SPILL TO GROUND	SPILL TO SURFACE WATERS	SPILL TO SANITARY SEWER
Gas, Diesel, Oil	30 gallons	Any quantity that causes visible sheens, oil films, unnatural turbidity, foams, or deposits in the water feature	Any quantity not currently authorized by receiving WWTP. <u>Contact WWTP Only</u>
Sodium Hypochlorite (wave pools)	63 gallons		
Hydrochloric acid (wave pools)	136 gallons		
Calcium Hypochlorite (wave pools)	3/4 = .75 gallons = 10lbs		
Any other significant material	50 gallons or 50 lbs		

**In the event of a spill, responding staff should adhere to the following Spill Response Procedures:**

**Spill Response Procedure**

1. **Personal safety first!** Operate only within your capabilities and your level of training.
2. Locate and use appropriate Personal Protective Equipment (PPE)
3. Control/Stop the source, if possible
4. Locate the facility Spill Kit (map, below)
5. Contain the spill to a small area using Spill Kit sorbent materials and barriers.
6. Prevent contact with permeable ground, surface waters, storm, and sewer infrastructure.
7. Clean up spill, seek contracted assistance as necessary.
8. Do not use water for containment or clean-up; water can spread or infiltrate the pollutant to ground and surface water resources.
9. Comply with Notification and Reporting Procedures (Page 1). It is better to over-report than to not report at all.
10. **When in doubt, report!** Use *EGLE's generic Spill Release Report* form to record initial notifications.

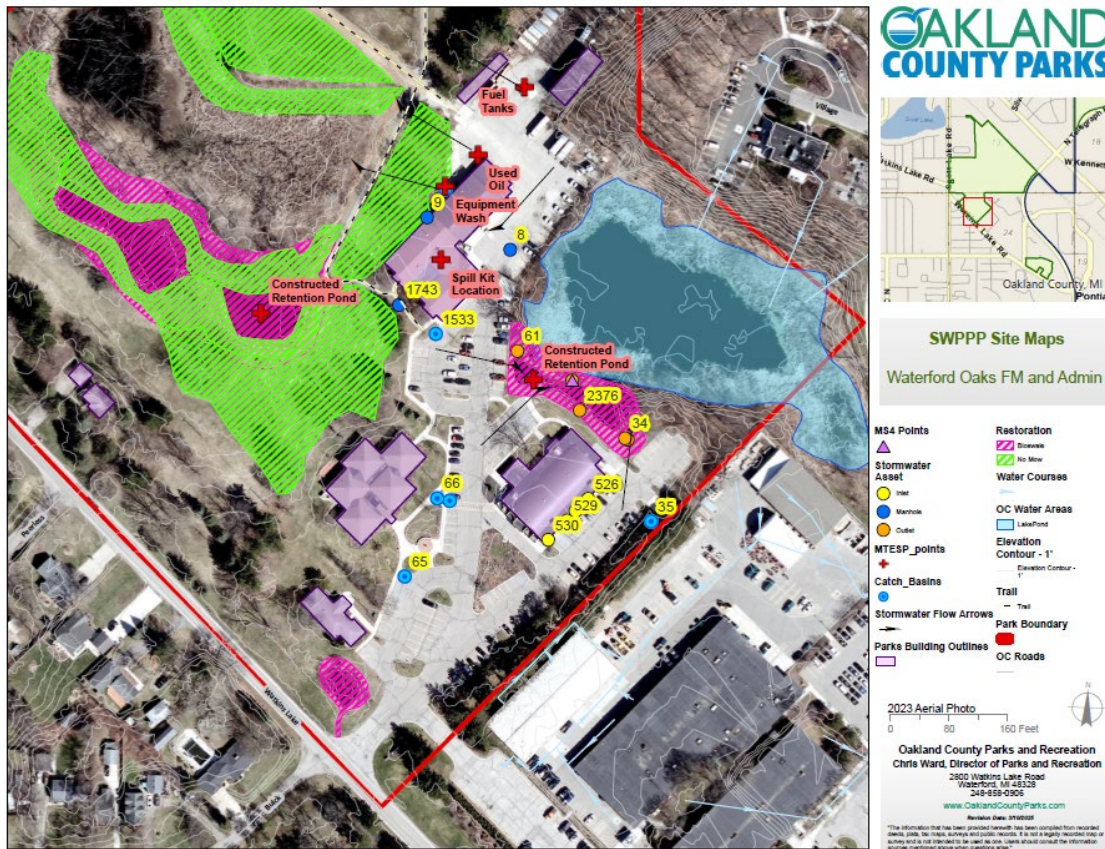
*This procedure applies to all Oakland County Parks properties.*

*Park-specific SPCC, PIPP, and/or SWPPP documents may provide more detailed guidelines.*

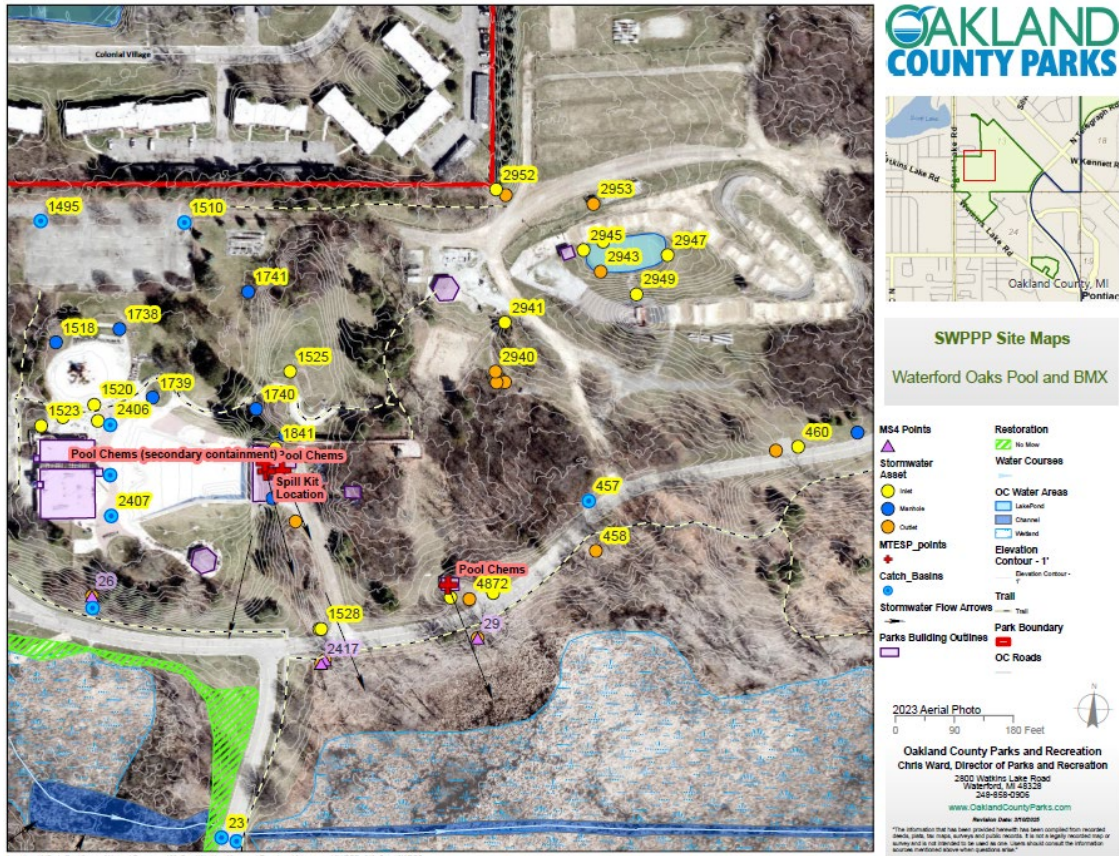
**PARK-SPECIFIC FACILITY MAP**

*Map should note locations of spill kit; PPE; vulnerable land/ water resources; storm/ sewer infrastructure; flow direction.*

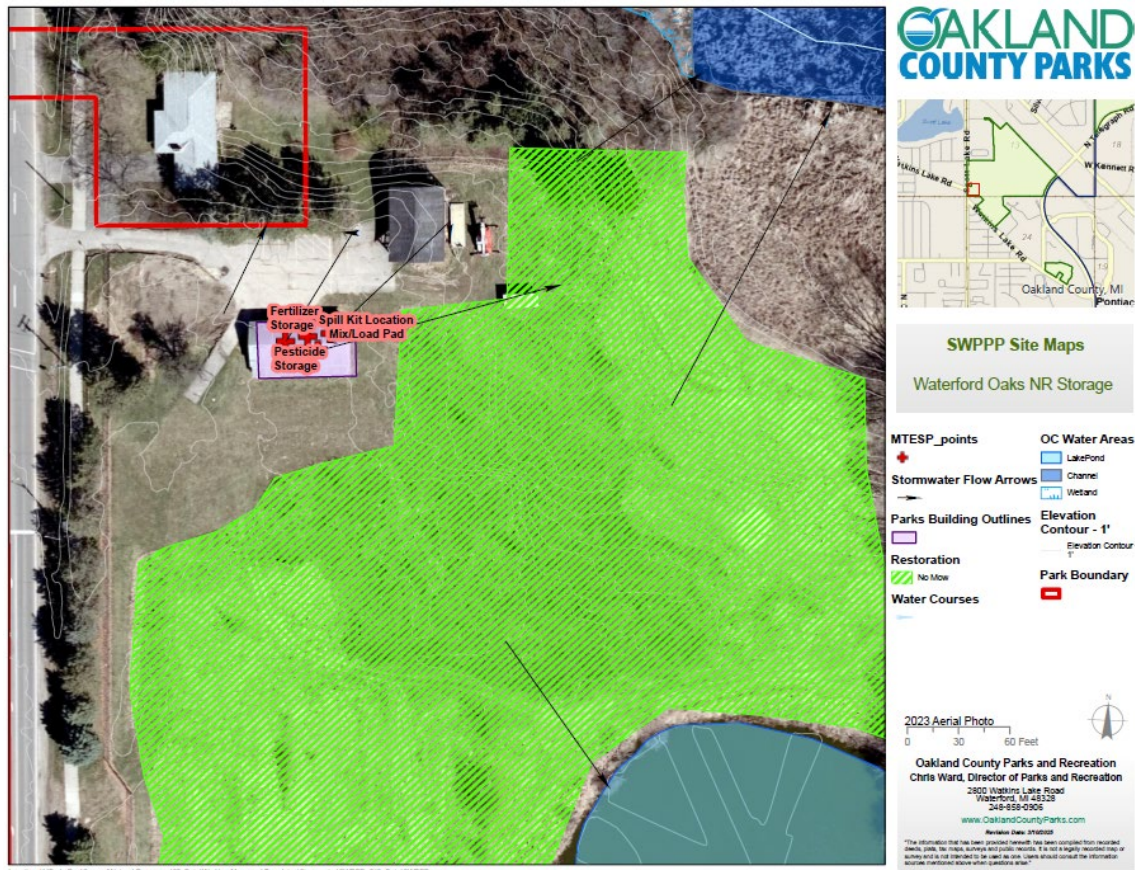
**Waterford Oaks Maintenance Yard**



# Waterford Oaks Waterpark



# Waterford Oaks Greenhouse/Natural Resources



## Purpose

The purpose of this Spill & Surface Water Pollution Response Call List is to describe how the Oakland County Parks and Recreation (OCPR) staff identifies and responds to Oakland County surface water or ground pollution incidents reported through the Oakland County Water Resource Commissioner's (WRC) 24-hour Pollution Hotline (248-858-0931) and other local and State resources.

## Scope

This procedure applies to all Oakland County Parks surface water or ground pollution incidents reported through the WRC Pollution Hotline and other and other local and State resources.

## Background

OCPR has jurisdiction of more than 6800 acres of land and 1200 acres of open water lakes and associated wetlands and coordinates Federal Phase II Storm Water Permit compliance through the Oakland County WRC. WRC has trained staff available to evaluate surface water pollution complaints and determine proper notification and response. The WRC Pollution Hotline has been operational since 1999 and consists of a 24-hour Pollution Hotline number (248-858-0931) where residents, municipalities and others can call to report surface water pollution in Oakland County.

WRC created this Pollution Hotline to address the County's Phase II Storm Water Permit requirements and because individuals wanting to report surface water pollution in Oakland County were often unclear about how to do so. WRC's Pollution Hotline provides a clearing house for surface water pollution complaints resulting in consistent 24-hour response, or referral as outlined herein.

## Definitions

**Surface Water Pollution** – Any illicit discharge or release of an unnatural substance such as oil, gas, sediment, sanitary sewage and any other polluting material, that causes a visible sheen/film on the water surface, unnatural turbidity, color, foam or deposits, mortality of fish/wildlife or other aquatic organisms, and long/short term threats to the public health and welfare.

The following examples of surface water pollution incidents are commonly reported to the WRC Pollution Hotline:

- Contamination to lakes, rivers, and streams
- Pollution entering a storm sewer or surface water
- Suspicious dumping to drains and/or surface waters
- Suspicious discharges from pipes
- Sewage discharges on the ground or in the surface water
- Large numbers of dead fish
- Failing septic systems
- Construction site soil erosion entering surface waters
- Polluted storm water runoff from storage piles, dumpsters and poor housekeeping practices
- Illegal connections of sanitary sewers to storm sewers or surface waters



# OAKLAND COUNTY PARKS

## Spill & Surface Water Pollution Response Call List

In the event of surface water pollution spill event, observations are to be reported using the following phone escalation procedures. When in doubt, report!

<b>24-hour WRC Pollution Hotline – 248-858-0931</b> <ul style="list-style-type: none"> <li>WRC contacts spill coordinators and/or responders</li> <li>WRC contacts Oakland County Health Department on-call staff</li> <li>WRC advises on follow-up calls to EGLE and NRC</li> </ul>		
<b>911 – Fire Chief</b> <ul style="list-style-type: none"> <li>Report nature of spill to surface water, reference call to WRC Pollution Hotline</li> <li>FD will call in county designated HAZMAT teams as necessary</li> </ul>		
<b>Full Time Supervisor and/ or District Chief for the facility</b>		
White Lake Oaks	Jeff Monette (Crew Chief)	248-296-2695
Natural Resources - Freshwater	Eric Diesing (Freshwater Coordinator)	248-892-8711
<b>EGLE Pollution Emergency Number (PEAS) -1-800-292-4706</b> <b>NRC – Federal Authorities – 1-800-424-8802</b>		
<b>Waste Water Treatment Plants (WWTPs):</b>		
<u>Waterford Oaks</u>	<u>Glen Oaks and Red Oaks</u>	
Pontiac Waste Water Treatment (248) 857-5695	Detroit Water and Sewerage Department (313) 267-8000	

If Necessary for Extensive Spill Clean-up Contracting Services:

- Marine Pollution Control – 800-521-8232, Blanket Contract No. 002775
- Environmental Recycling Group – 734-437-9650, Blanket Contract No. 002775
- Test America Lab – 810-229-2763

POTENTIAL POLLUTANT	REPORTABLE QUANTITIES		
	SPILL TO GROUND	SPILL TO SURFACE WATERS	SPILL TO SANITARY SEWER
Gas, Diesel, Oil	30 gallons	Any quantity that causes visible sheens, oil films, unnatural turbidity, foams, or deposits in the water feature	Any quantity not currently authorized by receiving WWTP. <u>Contact WWTP Only</u>
Sodium Hypochlorite (wave pools)	63 gallons		
Hydrochloric acid (wave pools)	136 gallons		
Calcium Hypochlorite (wave pools)	3/4 = .75 gallons = 10lbs		
Any other significant material	50 gallons or 50 lbs		

**In the event of a spill, responding staff should adhere to the following Spill Response Procedures:**

**Spill Response Procedure**

1. **Personal safety first!** Operate only within your capabilities and your level of training.
2. Locate and use appropriate Personal Protective Equipment (PPE)
3. Control/Stop the source, if possible
4. Locate the facility Spill Kit (map, below)
5. Contain the spill to a small area using Spill Kit sorbent materials and barriers.
6. Prevent contact with permeable ground, surface waters, storm, and sewer infrastructure.
7. Clean up spill, seek contracted assistance as necessary.
8. Do not use water for containment or clean-up; water can spread or infiltrate the pollutant to ground and surface water resources.
9. Comply with Notification and Reporting Procedures (Page 1). It is better to over-report than to not report at all.
10. **When in doubt, report!** Use EGLE's generic Spill Release Report form to record initial notifications.

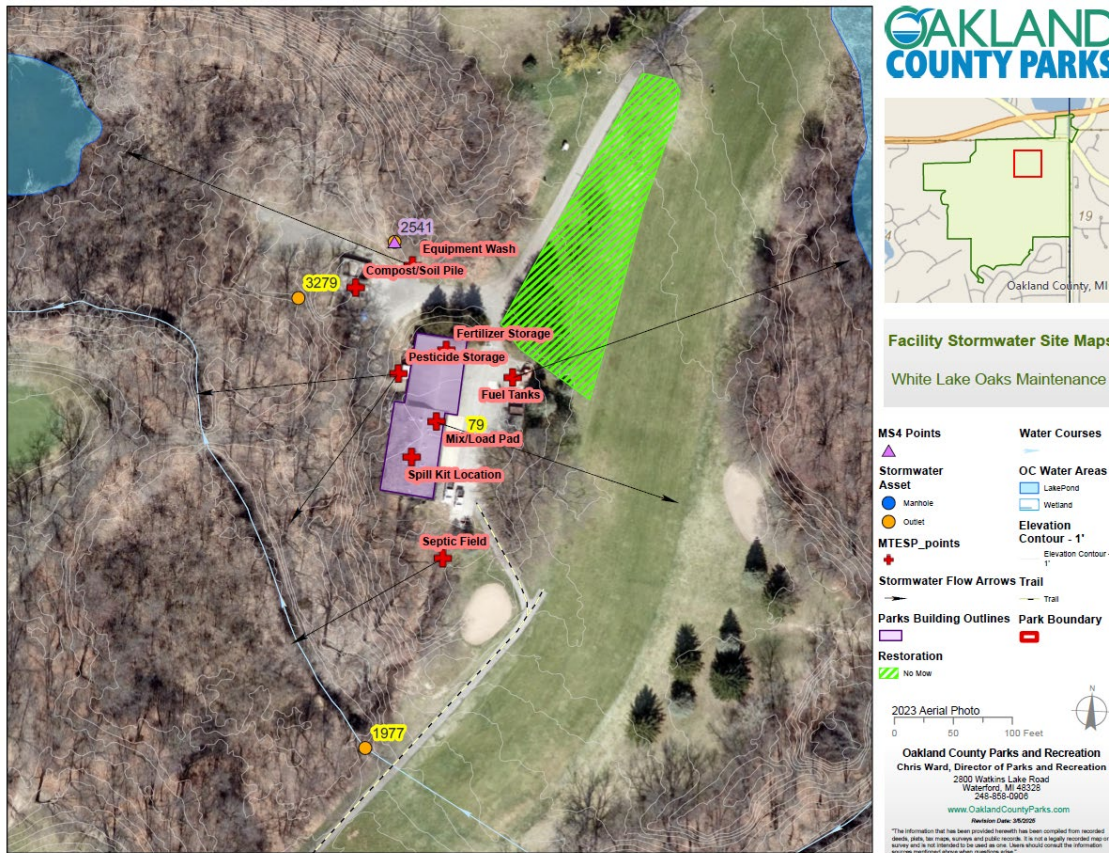
*This procedure applies to all Oakland County Parks properties.*

*Park-specific SPCC, PIPP, and/or SWPPP documents may provide more detailed guidelines.*

**PARK-SPECIFIC FACILITY MAP**

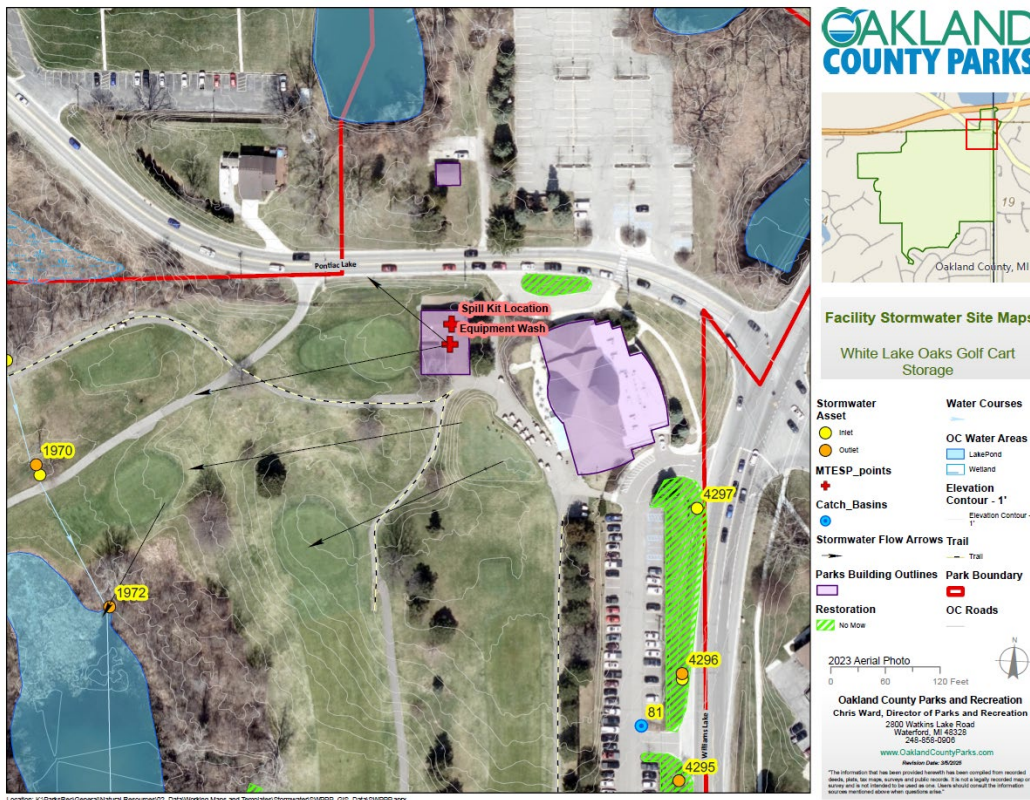
*Map should note locations of spill kit; PPE; vulnerable land/ water resources; storm/ sewer infrastructure; flow direction.*

**White Lake Oaks Maintenance Yard**



Location: K:\Parks\Rec\General\Natural Resources\02\_Data\Working Maps and Templates\Stormwater\SWPPP\_GIS\_Data\SWPPP.aprx

# White Lake Oaks Cart Storage



## Purpose

The purpose of this Spill & Surface Water Pollution Response Call List is to describe how the Oakland County Parks and Recreation (OCP) staff identifies and responds to Oakland County surface water or ground pollution incidents reported through the Oakland County Water Resource Commissioner’s (WRC) 24-hour Pollution Hotline (248-858-0931) and other local and State resources.

## Scope

This procedure applies to all Oakland County Parks surface water or ground pollution incidents reported through the WRC Pollution Hotline and other and other local and State resources.

## Background

OCP has jurisdiction of more than 6800 acres of land and 1200 acres of open water lakes and associated wetlands and coordinates Federal Phase II Storm Water Permit compliance through the Oakland County WRC. WRC has trained staff available to evaluate surface water pollution complaints and determine proper notification and response. The WRC Pollution Hotline has been operational since 1999 and consists of a 24-hour Pollution Hotline number (248-858-0931) where residents, municipalities and others can call to report surface water pollution in Oakland County.

WRC created this Pollution Hotline to address the County’s Phase II Storm Water Permit requirements and because individuals wanting to report surface water pollution in Oakland County were often unclear about how to do so. WRC’s Pollution Hotline provides a clearing house for surface water pollution complaints resulting in consistent 24-hour response, or referral as outlined herein.

## Definitions

**Surface Water Pollution** – Any illicit discharge or release of an unnatural substance such as oil, gas, sediment, sanitary sewage and any other polluting material, that causes a visible sheen/film on the water surface,

unnatural turbidity, color, foam or deposits, mortality of fish/wildlife or other aquatic organisms, and long/short term threats to the public health and welfare.

The following examples of surface water pollution incidents are commonly reported to the WRC Pollution Hotline:

- Contamination to lakes, rivers, and streams
- Pollution entering a storm sewer or surface water
- Suspicious dumping to drains and/or surface waters
- Suspicious discharges from pipes
- Sewage discharges on the ground or in the surface water
- Large numbers of dead fish
- Failing septic systems
- Construction site soil erosion entering surface waters
- Polluted storm water runoff from storage piles, dumpsters and poor housekeeping practices
- Illegal connections of sanitary sewers to storm sewers or surface waters

