

# SNAP CUTS:

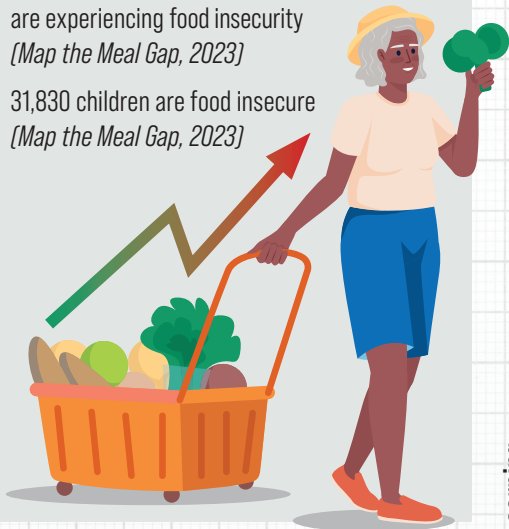
## IMPACTS ON OAKLAND COUNTY AND MICHIGAN



Supplemental Nutrition Assistance Program (SNAP, i.e. food stamps) provides benefits for qualifying low-income households to purchase food. New Federal Budget Reconciliation guidelines may impact households by reducing eligibility and increasing restrictions on who can receive benefits and limiting future benefit updates to cover changing food costs, which will increase the number of food insecure households, especially those with children, seniors, and persons with disabilities.

### Who will be impacted in Oakland County?

- 44,531 households are enrolled in SNAP *(American Community Survey, 2023)*
- 18,713 (42%) households are seniors
- 18,275 (41%) households have children under 18 years
- 22,847 (51%) of these households have at least one person with a disability
- More than 1 in 10 residents (155,580) are experiencing food insecurity *(Map the Meal Gap, 2023)*
- 31,830 children are food insecure *(Map the Meal Gap, 2023)*



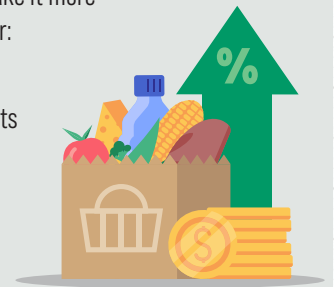
### How will cuts affect Oakland County residents?

**Food Affordability:** The average meal cost in Oakland County is almost \$0.50 higher per meal than in MI. Soon SNAP benefits may cover less.

**SNAP-Education Cuts:** Evidence based education about meal planning and preparation, budgeting, and nutrition was delivered in schools, senior centers, farmers markets, food pantries and more. Overall knowledge and confidence related to nutrition may decrease.


**New Work Requirements:** New work requirements make it more difficult for families to receive benefits, particularly for:

- Families with children (14-17 yrs. old)
- Able bodied adults (55-64 yrs. old) without dependents
- Youth who have aged out of foster care
- People experiencing homelessness
- Veterans



### How will cuts affect the local economy, schools, and businesses?

**Impacts on Learning**




Schools & teachers may report higher numbers of students arriving to school hungry & having difficulty learning.

**Impacts on Healthcare**



People may be forced to choose between food, housing, healthcare, and prescriptions. They may delay needed care/ preventative care, causing higher healthcare costs later.

**Impacts on the Local Economy**



Studies show every \$1 in SNAP returns \$1.50-\$1.79 to the local economy *(Center on Budget & Policy Priorities, 2025)*. The average monthly benefit per person in Michigan is \$173. Local farmers will receive fewer dollars where SNAP is accepted.

**Oakland County**  
FOOD POLICY COUNCIL