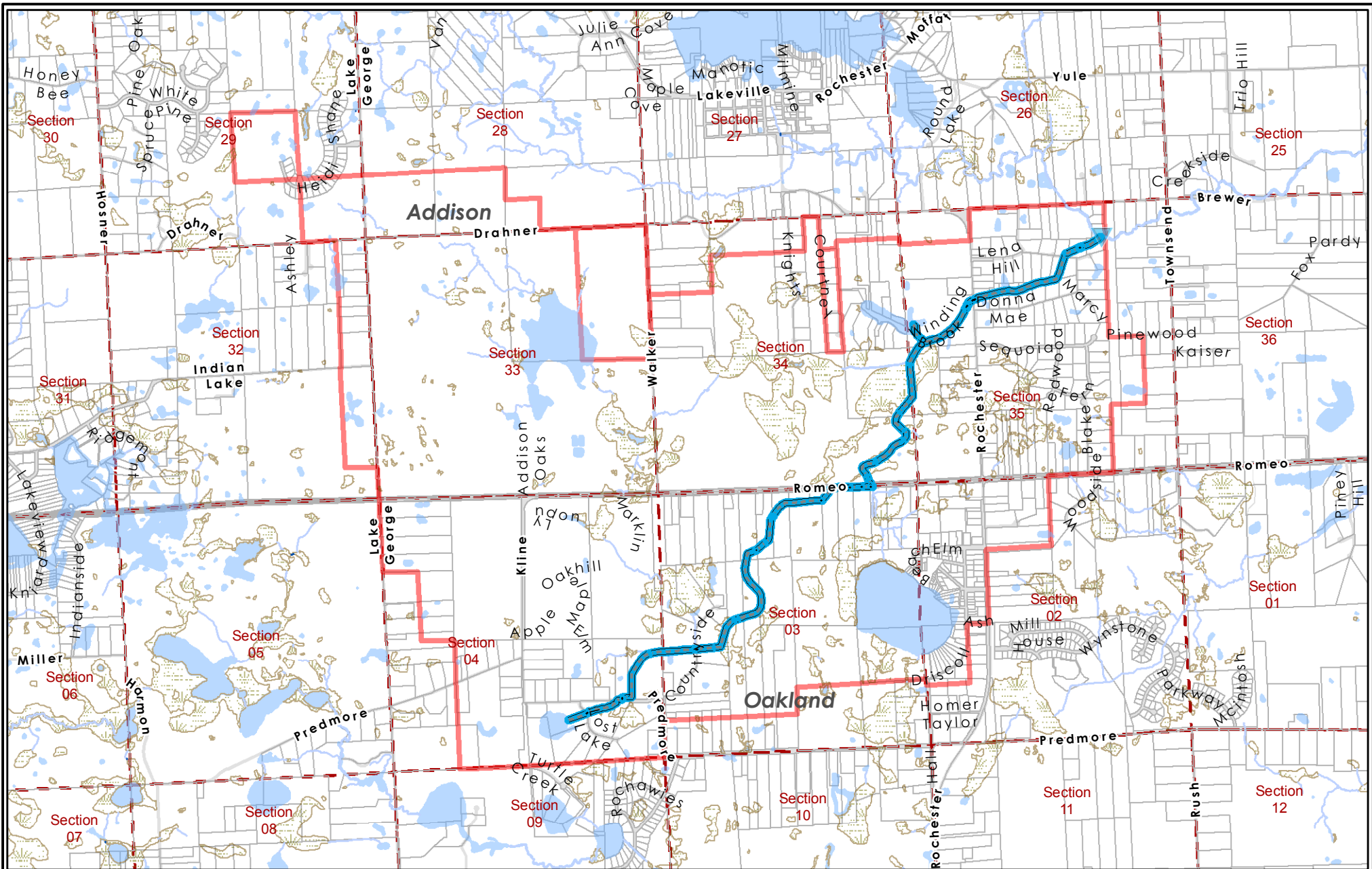


Krohn County Drain

The Krohn Drain was established in 1909. The Drain has its outlet in the Stony Creek in the Northeast quarter of section 35 in the Township of Addison. From its outlet of lower terminus the drain extends southwesterly to Romeo Road which is the east-west line between Addison and Oakland Township; thence westerly along Romeo Road for a distance of 745 feet; thence continuing southwesterly to its upper terminus at the east shoreline of Mud Lake Also a branch extending from the main branch northerly 120 feet to Miller Lake. Location of the branch is 4424 feet upstream from the lower terminus of the main drain. Cost of the work was \$3,500. The Drain collects runoff from 2,846 acres and is just over 3 miles of open ditch. A map indicating the drainage district and the location of the drain is available below.



Legend			
	Lower Terminus		Assessment District
	Channel		Tax Parcel
	Spillway		Section Lines
	Stream / River		Municipal District
	Private / Maintained by Others		Swamp / Marsh
	Storm Pipe / Culvert		Drain Detention / Retention Pond
	NON WRC Culvert		Lake / Pond or Stream / River / Channel
	Siphon		Force Main
	Private / Maintained by Others		

KROHN DRAIN
DRAIN ASSESSMENT DISTRICT
OAKLAND TOWNSHIP
ADDISON TOWNSHIP



Disclaimer: The information provided in this system has been compiled from recorded deeds, plans, tax maps, surveys and other public records and data. It is not a legally recorded map or survey and is not intended to be used as one. Users of this data are hereby notified that the information sources mentioned above should be consulted for verification of the information.