





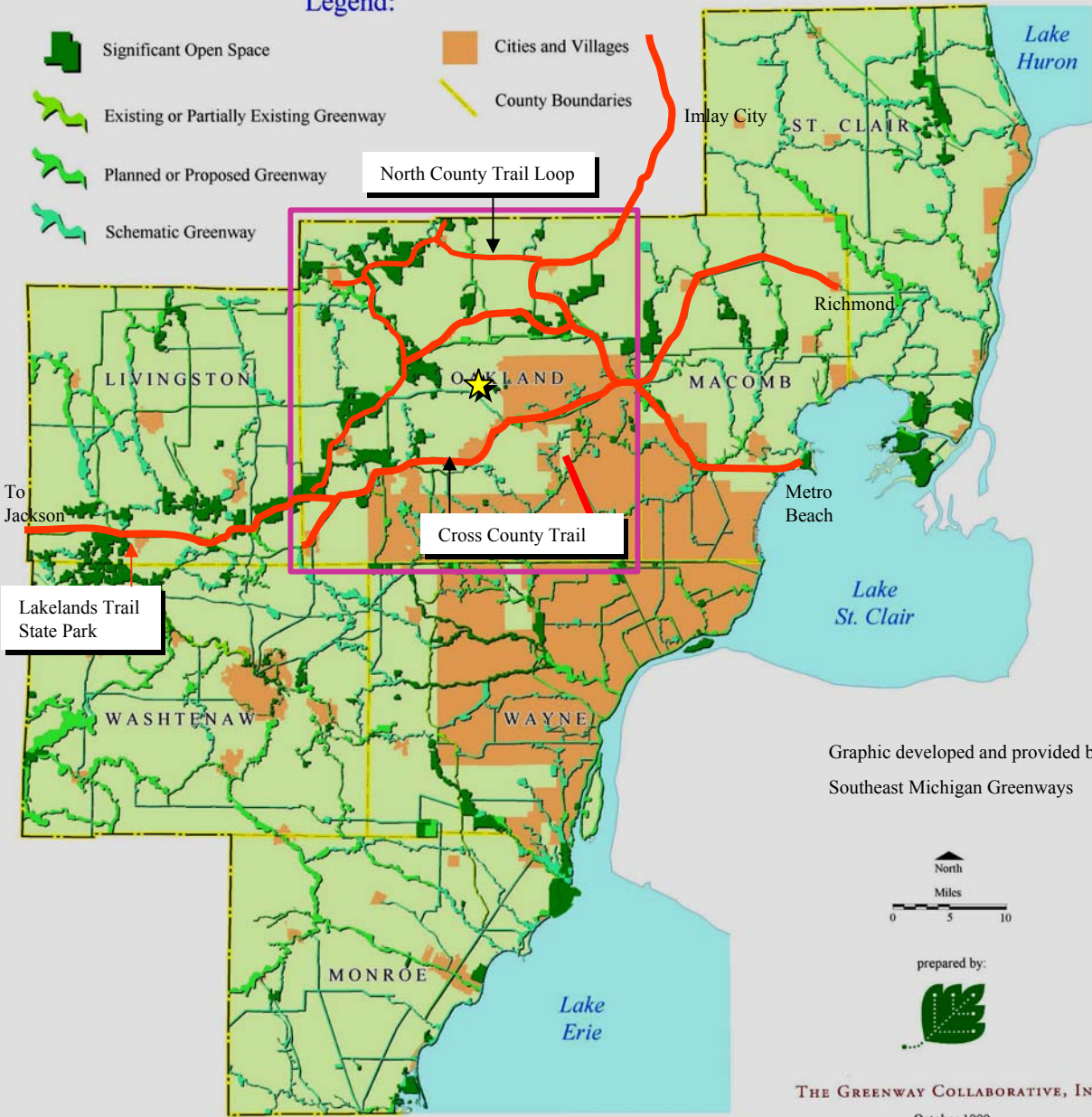


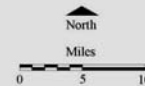
The Regional Greenway Network Vision

Legend:

-  Significant Open Space
-  Cities and Villages
-  Existing or Partially Existing Greenway
-  County Boundaries
-  Planned or Proposed Greenway
-  Schematic Greenway



Graphic developed and provided by:
Southeast Michigan Greenways



prepared by:



THE GREENWAY COLLABORATIVE, INC.

October 1999

County Trails & Regional Connections

The Southeast Michigan Greenways Project including trails in Oakland County have been designated by the Governor's office in the state of Michigan and the White House nationally as a "Millenium Trail Project". This recognition distinguishes this system as a priority at both the state and national level. The Clinton River Trail will connect to trail and features throughout the region.

 Priority Regional Connectors

Oakland County Planning & Economic Development Services