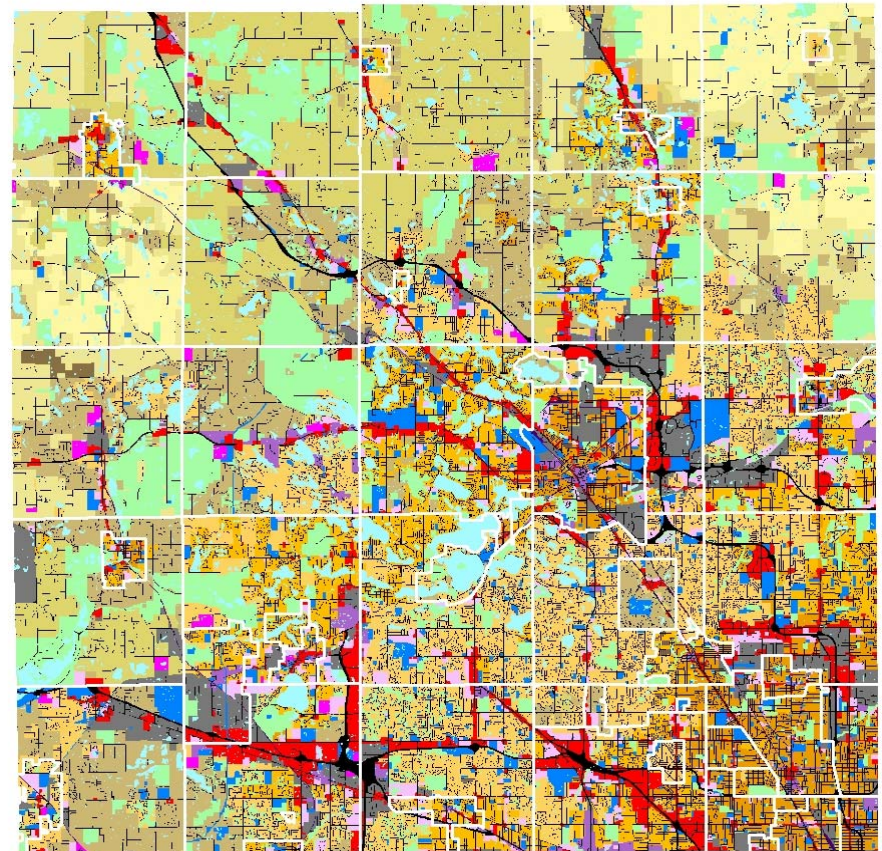
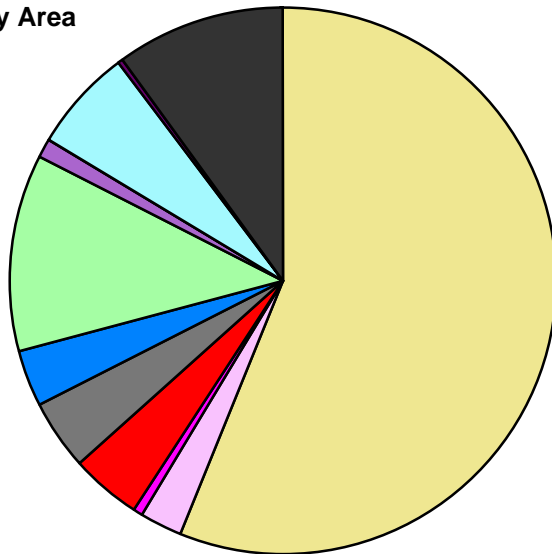


Land Use	Area (ac.)	Area (%)
Single Family Residential	326,033.3	56.2%
Multiple Family	14,740.0	2.5%
Mobile Home Park	2,872.4	0.5%
Commercial/Office	24,476.4	4.2%
Industrial	23,103.5	4.0%
Public/Institutional	19,992.5	3.4%
Recreation/Conservation	68,372.2	11.8%
Mixed Use	5,681.1	1.0%
Reclamation Plan	817.2	0.1%
Water	35,038.5	6.0%
Railroad Right-of-Way	1,274.2	0.2%
Road Right-of-Way	58,144.1	10.0%
Total	580,545.7	100.0%

Single Family by Lot Size	Area (ac.)	Area (%)
10 acres or greater	26,283.5	8.1%
5 to 9.9 acres	35,894.9	11.0%
2.5 to 4.9 acres	59,414.3	18.2%
1 to 2.4 acres	65,488.9	20.1%
14,000 to 43,559 sq. ft.	75,746.4	23.2%
8,000 to 13,999 sq. ft.	43,707.5	13.4%
Less than 8,000 sq. ft.	19,497.8	6.0%
Single Family Sub-total	326,033.3	100.0%

Composite Master Plan by Area

- Single Family Residential
- Multiple Family
- Mobile Home Park
- Commercial/Office
- Industrial
- Public/Institutional
- Recreation/Conservation
- Mixed Use
- Reclamation Plan
- Water
- Railroad Right-of-Way
- Road Right-of-Way



For more information, maps, or questions about this data, please contact the Oakland County One Stop Shop at (248) 858-0720.

These statistics represent a generalized future land use based on each community's master plan. Right-of-way and water figures are based on existing conditions.