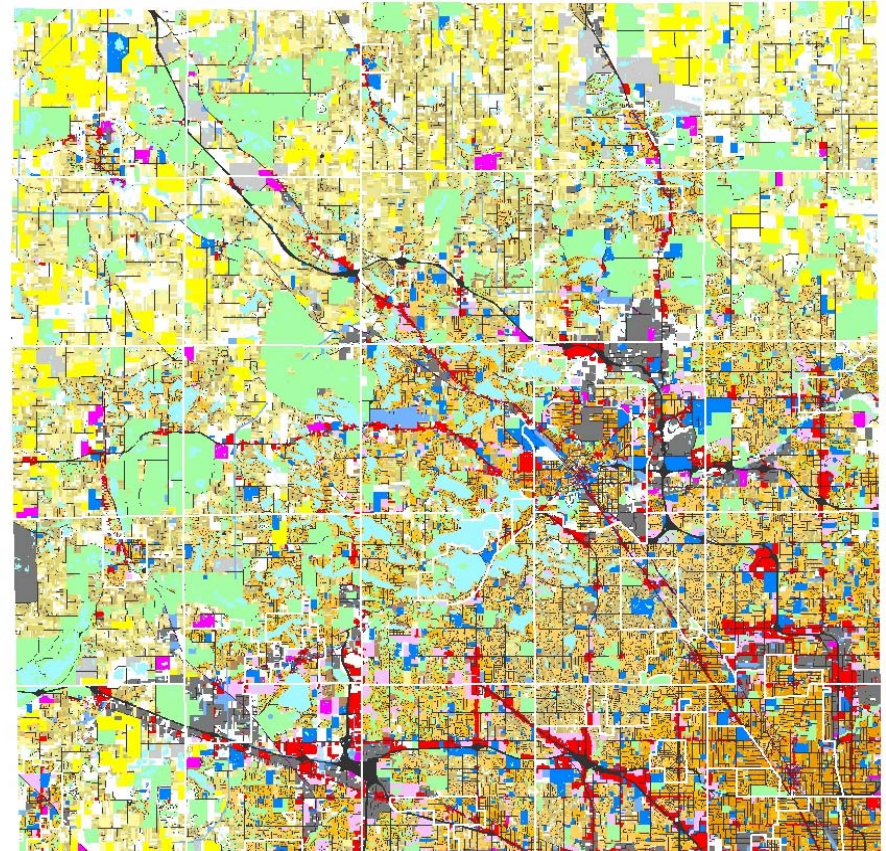
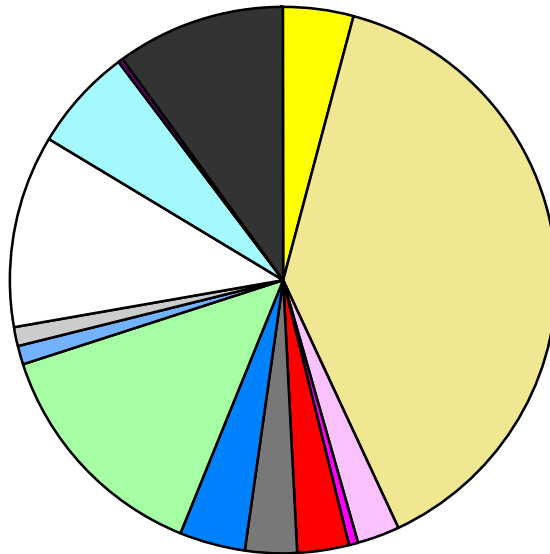


Land Use	Area (ac.)	Area (%)	Parcels	Parcels (%)
Agricultural	24,901.6	4.3%	609	0.1%
Single Family Residential	225,745.5	38.9%	357,868	84.0%
Multiple Family	13,492.2	2.3%	2,594	0.6%
Mobile Home Park	3,411.8	0.6%	241	0.1%
Commercial/Office	18,191.6	3.1%	12,683	3.0%
Industrial	18,179.2	3.1%	5,895	1.4%
Public/Institutional	21,049.4	3.6%	3,062	0.7%
Recreation/Conservation	82,151.3	14.2%	6,746	1.6%
Transp./Utility/Comm.	6,341.7	1.1%	1,204	0.3%
Extractive	5,820.4	1.0%	83	0.0%
Vacant	66,583.4	11.5%	35,029	8.2%
Water	35,036.6	6.0%		
Railroad Right-of-Way	1,102.0	0.2%		
Road Right-of-Way	58,537.5	10.1%		
Total	580,544.3	100.0%	426,014	100.0%

Single Family By Lot Size	Area (ac.)	Area (%)	Parcels	Parcels (%)
10 acres or greater	31,473.2	13.9%	1,737	0.5%
5 to 9.9 acres	30,327.2	13.4%	3,913	1.1%
2.5 to 4.9 acres	28,467.7	12.6%	7,955	2.2%
1 to 2.4 acres	36,305.2	16.1%	23,404	6.5%
14,000 to 43,559 sq. ft.	55,918.1	24.8%	110,951	31.0%
8,000 to 13,999 sq. ft.	26,856.9	11.9%	108,147	30.2%
Less than 8,000 sq. ft.	13,850.1	6.1%	101,240	28.3%
More than one unit per parcel	2,547.2	1.1%	521	0.1%
Single Family Sub-total	225,745.5	100.0%	357,868	100.0%

Land Use by Area

- Agricultural
- Single Family Residential
- Multiple Family
- Mobile Home Park
- Commercial/Office
- Industrial
- Public/Institutional
- Recreation/Conservation
- Transp./Utility/Comm.
- Extractive
- Vacant
- Water
- Railroad Right-of-Way
- Road Right-of-Way



For more information, maps, or questions about this data, please contact the Oakland County One Stop Shop at (248) 858-0720.