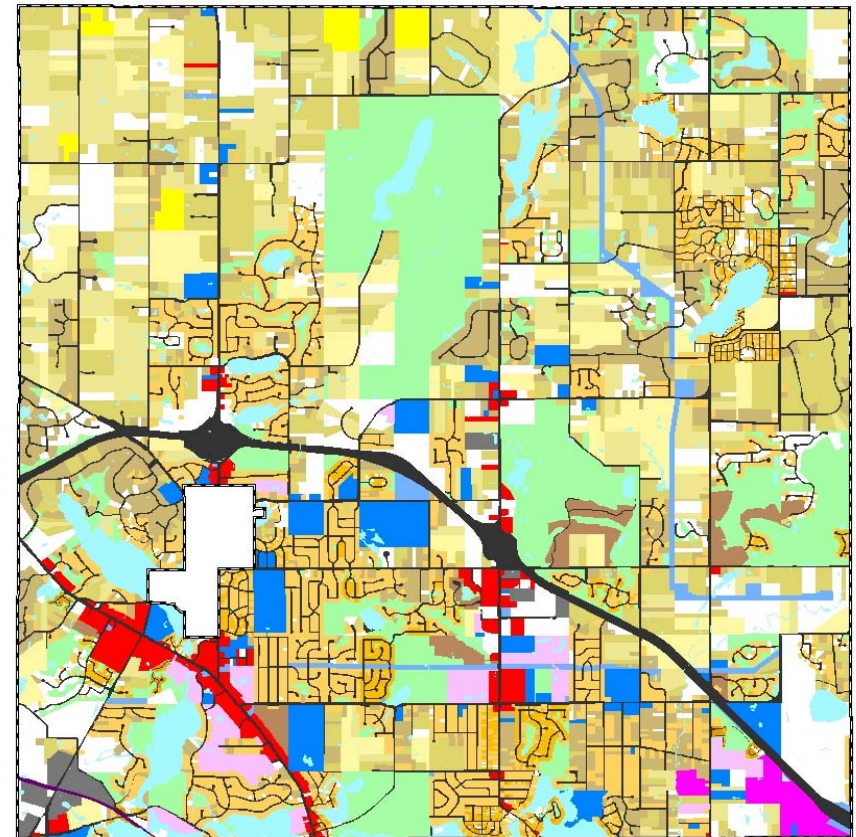
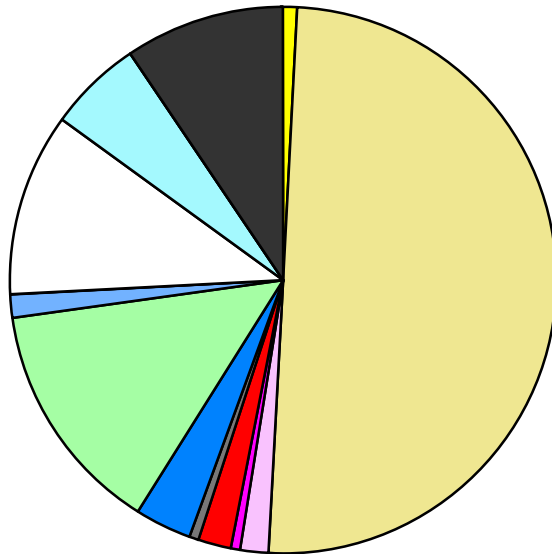


Land Use	Area (ac.)	Area (%)	Parcels	Parcels (%)
Agricultural	173.4	0.7%	11	0.1%
Single Family Residential	11,650.2	50.2%	10,148	83.7%
Multiple Family	345.7	1.5%	25	0.2%
Mobile Home Park	137.3	0.6%	3	0.0%
Commercial/Office	432.4	1.9%	238	2.0%
Industrial	145.9	0.6%	23	0.2%
Public/Institutional	758.1	3.3%	72	0.6%
Recreation/Conservation	3,255.3	14.0%	297	2.4%
Transp./Utility/Comm.	305.6	1.3%	53	0.4%
Extractive				
Vacant	2,539.2	10.9%	1,261	10.4%
Water	1,257.3	5.4%		
Railroad Right-of-Way	14.7	0.1%		
Road Right-of-Way	2,201.0	9.5%		
<b>Total</b>	<b>23,215.9</b>	<b>100.0%</b>	<b>12,131</b>	<b>100.0%</b>

Single Family By Lot Size	Area (ac.)	Area (%)	Parcels	Parcels (%)
10 acres or greater	1,423.8	12.2%	82	0.8%
5 to 9.9 acres	1,906.1	16.4%	250	2.5%
2.5 to 4.9 acres	2,618.8	22.5%	753	7.4%
1 to 2.4 acres	2,165.0	18.6%	1,430	14.1%
14,000 to 43,559 sq. ft.	2,857.8	24.5%	5,824	57.4%
8,000 to 13,999 sq. ft.	369.4	3.2%	1,432	14.1%
Less than 8,000 sq. ft.	46.3	0.4%	330	3.3%
More than one unit per parcel	263.0	2.3%	47	0.5%
<b>Single Family Sub-total</b>	<b>11,650.2</b>	<b>100.0%</b>	<b>10,148</b>	<b>100.0%</b>

### Land Use by Area

- Agricultural
- Single Family Residential
- Multiple Family
- Mobile Home Park
- Commercial/Office
- Industrial
- Public/Institutional
- Recreation/Conservation
- Transp./Utility/Comm.
- Extractive
- Vacant
- Water
- Railroad Right-of-Way
- Road Right-of-Way



For more information, maps, or questions about this data, please contact the Oakland County One Stop Shop at (248) 858-0720.