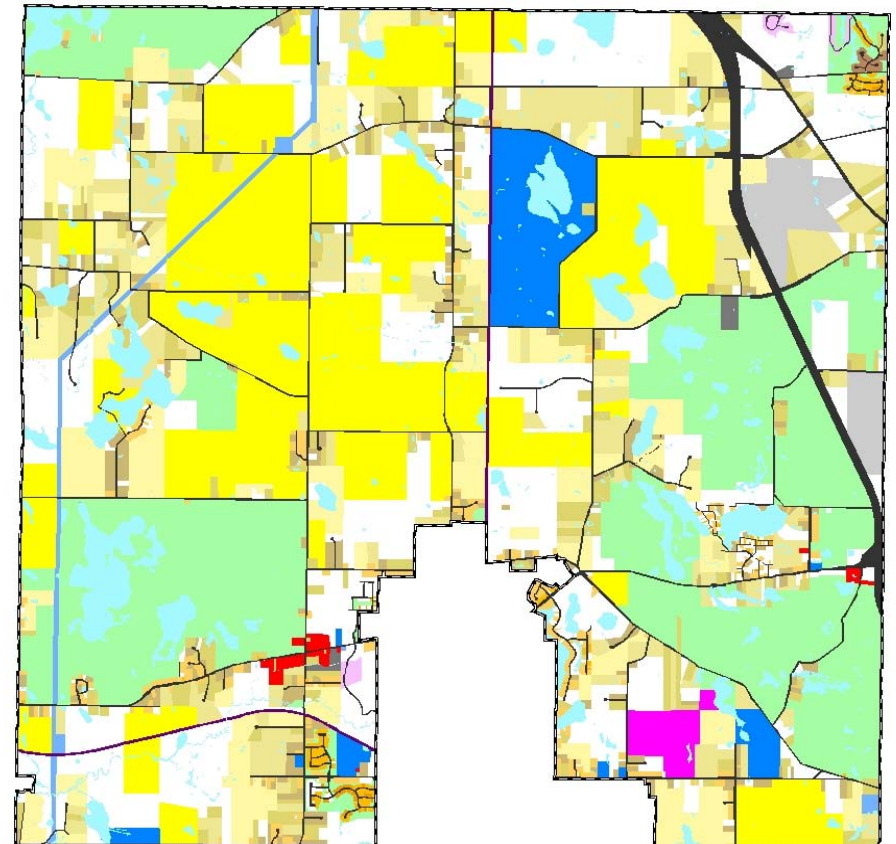
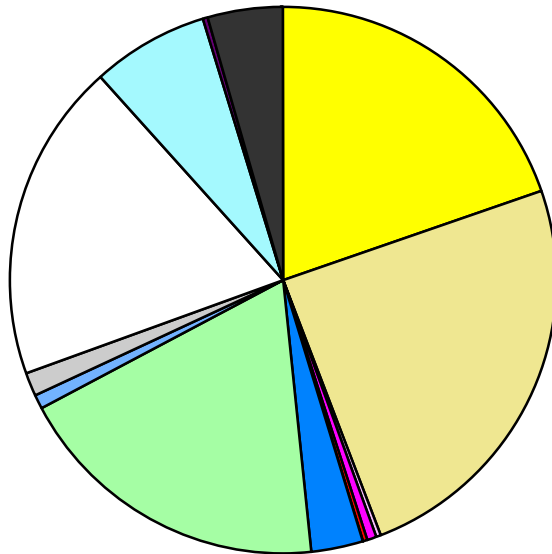


Land Use	Area (ac.)	Area (%)	Parcels	Parcels (%)
Agricultural	4,200.5	19.7%	82	3.2%
Single Family Residential	5,231.3	24.5%	1,729	67.1%
Multiple Family	39.2	0.2%	3	0.1%
Mobile Home Park	134.5	0.6%	8	0.3%
Commercial/Office	53.5	0.3%	20	0.8%
Industrial	36.5	0.2%	5	0.2%
Public/Institutional	606.5	2.8%	14	0.5%
Recreation/Conservation	4,053.1	19.0%	61	2.4%
Transp./Utility/Comm.	163.6	0.8%	16	0.6%
Extractive	330.8	1.5%	6	0.2%
Vacant	4,033.2	18.9%	634	24.6%
Water	1,465.8	6.9%		
Railroad Right-of-Way	77.2	0.4%		
Road Right-of-Way	931.5	4.4%		
Total	21,357.1	100.0%	2,578	100.0%

Single Family By Lot Size	Area (ac.)	Area (%)	Parcels	Parcels (%)
10 acres or greater	1,953.3	37.3%	96	5.6%
5 to 9.9 acres	1,507.9	28.8%	196	11.3%
2.5 to 4.9 acres	865.5	16.5%	229	13.2%
1 to 2.4 acres	485.2	9.3%	310	17.9%
14,000 to 43,559 sq. ft.	323.3	6.2%	527	30.5%
8,000 to 13,999 sq. ft.	69.3	1.3%	292	16.9%
Less than 8,000 sq. ft.	12.8	0.2%	77	4.5%
More than one unit per parcel	13.9	0.3%	2	0.1%
Single Family Sub-total	5,231.3	100.0%	1,729	100.0%

Land Use by Area

- Agricultural
- Single Family Residential
- Multiple Family
- Mobile Home Park
- Commercial/Office
- Industrial
- Public/Institutional
- Recreation/Conservation
- Transp./Utility/Comm.
- Extractive
- Vacant
- Water
- Railroad Right-of-Way
- Road Right-of-Way



For more information, maps, or questions about this data, please contact the Oakland County One Stop Shop at (248) 858-0720.