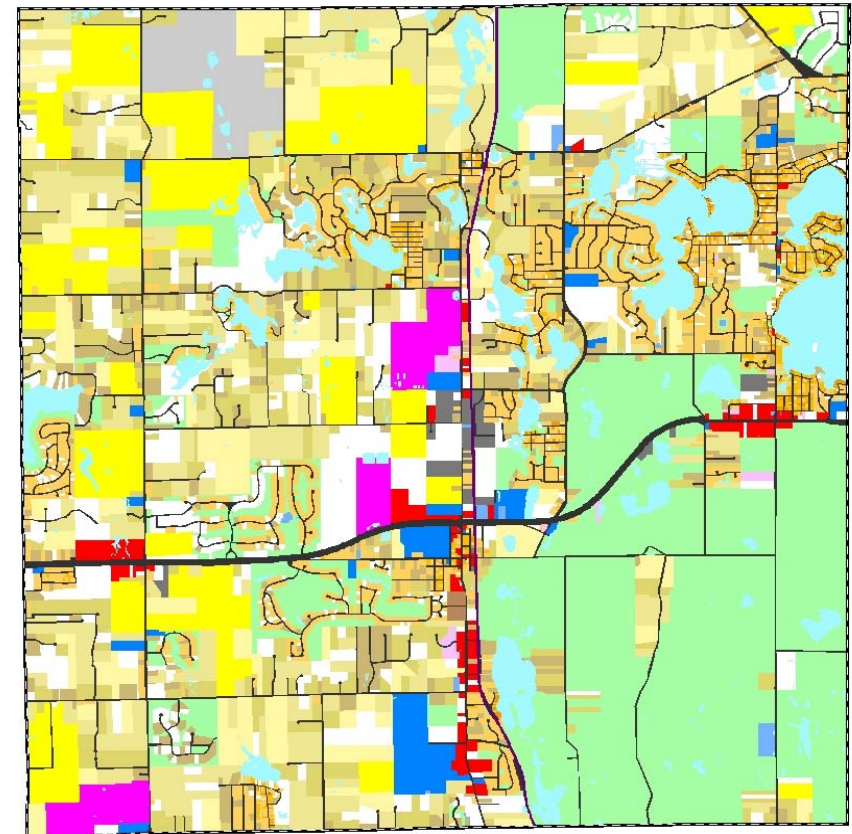
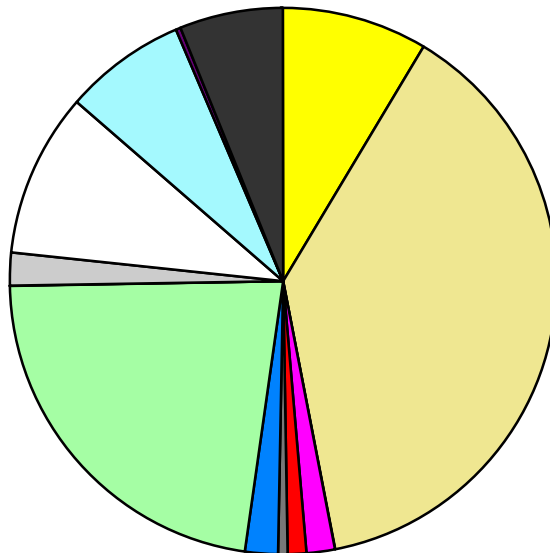


Land Use	Area (ac.)	Area (%)	Parcels	Parcels (%)
Agricultural	2,025.2	8.7%	49	0.6%
Single Family Residential	8,819.5	38.1%	6,297	81.5%
Multiple Family	52.4	0.2%	15	0.2%
Mobile Home Park	373.4	1.6%	7	0.1%
Commercial/Office	257.6	1.1%	140	1.8%
Industrial	141.9	0.6%	44	0.6%
Public/Institutional	389.0	1.7%	43	0.6%
Recreation/Conservation	5,218.4	22.5%	214	2.8%
Transp./Utility/Comm.	51.9	0.2%	19	0.2%
Extractive	397.0	1.7%	2	0.0%
Vacant	2,269.7	9.8%	899	11.6%
Water	1,682.4	7.3%		
Railroad Right-of-Way	72.3	0.3%		
Road Right-of-Way	1,399.7	6.0%		
Total	23,150.4	100.0%	7,729	100.0%

Single Family By Lot Size	Area (ac.)	Area (%)	Parcels	Parcels (%)
10 acres or greater	1,715.9	19.5%	108	1.7%
5 to 9.9 acres	2,197.3	24.9%	278	4.4%
2.5 to 4.9 acres	1,677.0	19.0%	447	7.1%
1 to 2.4 acres	1,096.8	12.4%	666	10.6%
14,000 to 43,559 sq. ft.	1,817.6	20.6%	3,419	54.3%
8,000 to 13,999 sq. ft.	226.2	2.6%	899	14.3%
Less than 8,000 sq. ft.	70.5	0.8%	479	7.6%
More than one unit per parcel	18.2	0.2%	1	0.0%
Single Family Sub-total	8,819.5	100.0%	6,297	100.0%

Land Use by Area

- Agricultural
- Single Family Residential
- Multiple Family
- Mobile Home Park
- Commercial/Office
- Industrial
- Public/Institutional
- Recreation/Conservation
- Transp./Utility/Comm.
- Extractive
- Vacant
- Water
- Railroad Right-of-Way
- Road Right-of-Way



For more information, maps, or questions about this data, please contact the Oakland County One Stop Shop at (248) 858-0720.