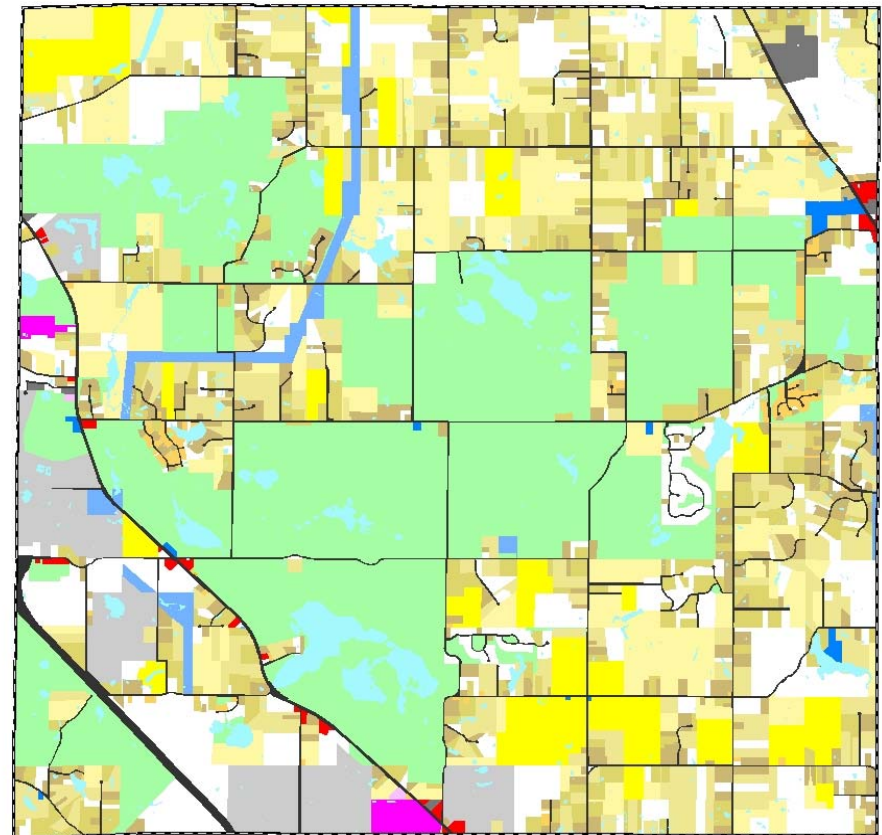
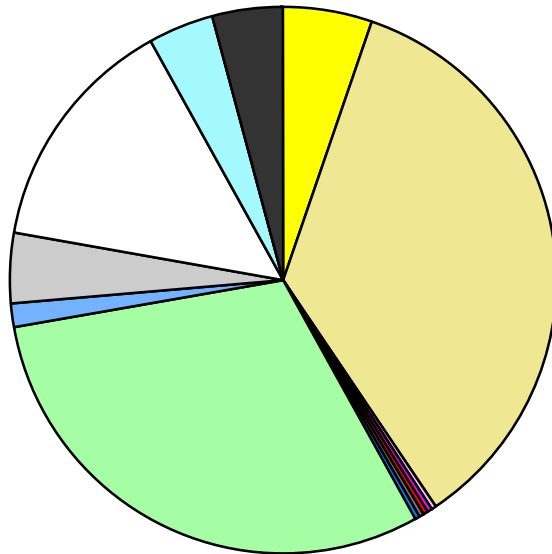


Land Use	Area (ac.)	Area (%)	Parcels	Parcels (%)
Agricultural	1,219.7	5.3%	33	1.3%
Single Family Residential	8,160.2	35.4%	1,775	71.0%
Multiple Family	7.4	0.0%	2	0.1%
Mobile Home Park	93.3	0.4%	3	0.1%
Commercial/Office	64.4	0.3%	29	1.2%
Industrial	85.9	0.4%	9	0.4%
Public/Institutional	62.2	0.3%	11	0.4%
Recreation/Conservation	6,959.9	30.2%	87	3.5%
Transp./Utility/Comm.	337.1	1.5%	17	0.7%
Extractive	970.5	4.2%	22	0.9%
Vacant	3,259.2	14.1%	511	20.4%
Water	905.4	3.9%		
Railroad Right-of-Way				
Road Right-of-Way	935.3	4.1%		
Total	23,060.5	100.0%	2,499	100.0%

Single Family By Lot Size	Area (ac.)	Area (%)	Parcels	Parcels (%)
10 acres or greater	2,671.8	32.7%	139	7.8%
5 to 9.9 acres	2,317.1	28.4%	289	16.3%
2.5 to 4.9 acres	1,694.3	20.8%	463	26.1%
1 to 2.4 acres	1,343.4	16.5%	703	39.6%
14,000 to 43,559 sq. ft.	132.8	1.6%	178	10.0%
8,000 to 13,999 sq. ft.	0.8	0.0%	3	0.2%
Less than 8,000 sq. ft.				
More than one unit per parcel				
Single Family Sub-total	8,160.2	100.0%	1,775	100.0%

Land Use by Area

- Agricultural
- Single Family Residential
- Multiple Family
- Mobile Home Park
- Commercial/Office
- Industrial
- Public/Institutional
- Recreation/Conservation
- Transp./Utility/Comm.
- Extractive
- Vacant
- Water
- Railroad Right-of-Way
- Road Right-of-Way



For more information, maps, or questions about this data, please contact the Oakland County One Stop Shop at (248) 858-0720.