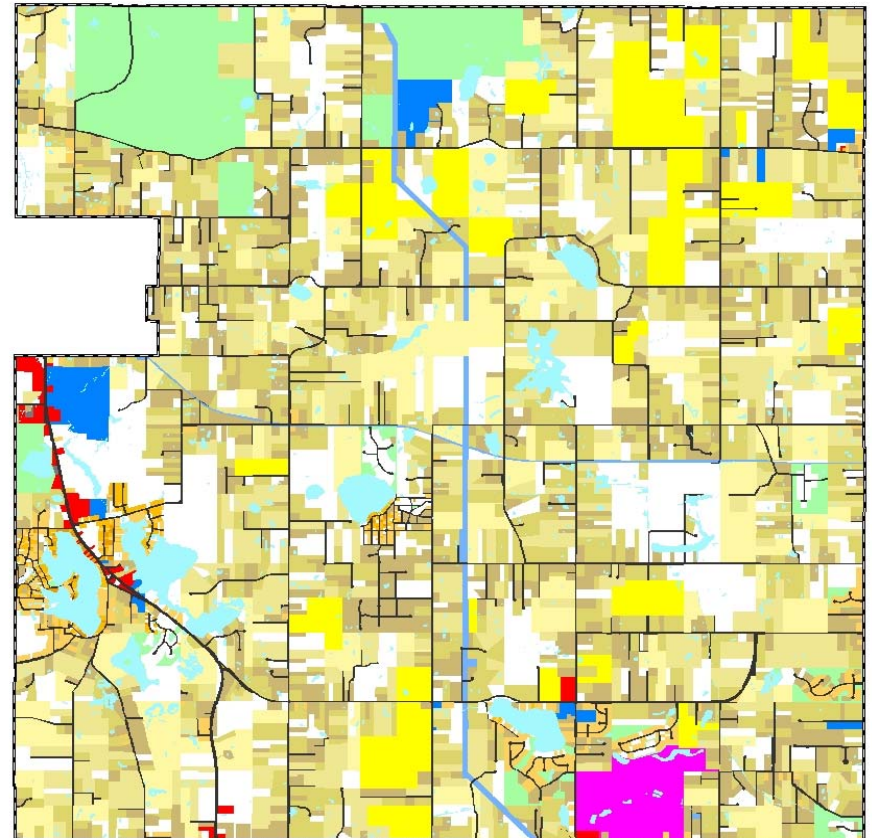
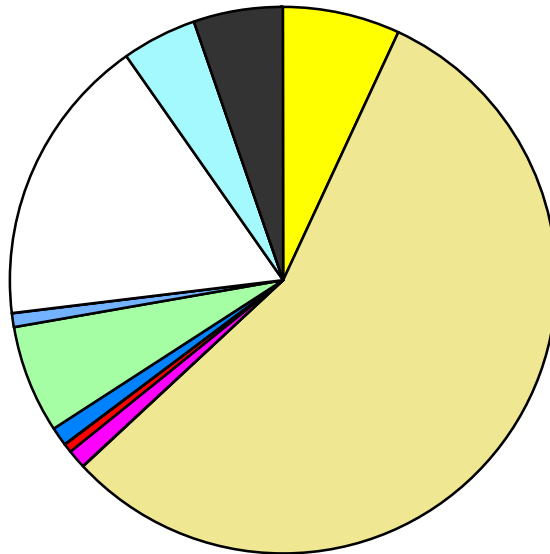


Land Use	Area (ac.)	Area (%)	Parcels	Parcels (%)
Agricultural	1,533.7	6.9%	51	0.9%
Single Family Residential	12,563.7	56.1%	4,170	76.3%
Multiple Family				
Mobile Home Park	272.0	1.2%	4	0.1%
Commercial/Office	108.4	0.5%	61	1.1%
Industrial	3.0	0.0%	2	0.0%
Public/Institutional	268.2	1.2%	22	0.4%
Recreation/Conservation	1,417.3	6.3%	201	3.7%
Transp./Utility/Comm.	194.1	0.9%	11	0.2%
Extractive				
Vacant	3,820.2	17.1%	945	17.3%
Water	1,039.4	4.6%		
Railroad Right-of-Way				
Road Right-of-Way	1,167.9	5.2%		
<b>Total</b>	<b>22,388.0</b>	<b>100.0%</b>	<b>5,467</b>	<b>100.0%</b>

Single Family By Lot Size	Area (ac.)	Area (%)	Parcels	Parcels (%)
10 acres or greater	2,416.4	19.2%	143	3.4%
5 to 9.9 acres	3,224.6	25.7%	423	10.1%
2.5 to 4.9 acres	3,497.3	27.8%	984	23.6%
1 to 2.4 acres	2,909.2	23.2%	1,420	34.1%
14,000 to 43,559 sq. ft.	413.6	3.3%	709	17.0%
8,000 to 13,999 sq. ft.	82.2	0.7%	344	8.2%
Less than 8,000 sq. ft.	20.5	0.2%	147	3.5%
More than one unit per parcel				
<b>Single Family Sub-total</b>	<b>12,563.7</b>	<b>100.0%</b>	<b>4,170</b>	<b>100.0%</b>

### Land Use by Area

- Agricultural
- Single Family Residential
- Multiple Family
- Mobile Home Park
- Commercial/Office
- Industrial
- Public/Institutional
- Recreation/Conservation
- Transp./Utility/Comm.
- Extractive
- Vacant
- Water
- Railroad Right-of-Way
- Road Right-of-Way



For more information, maps, or questions about this data, please contact the Oakland County One Stop Shop at (248) 858-0720.