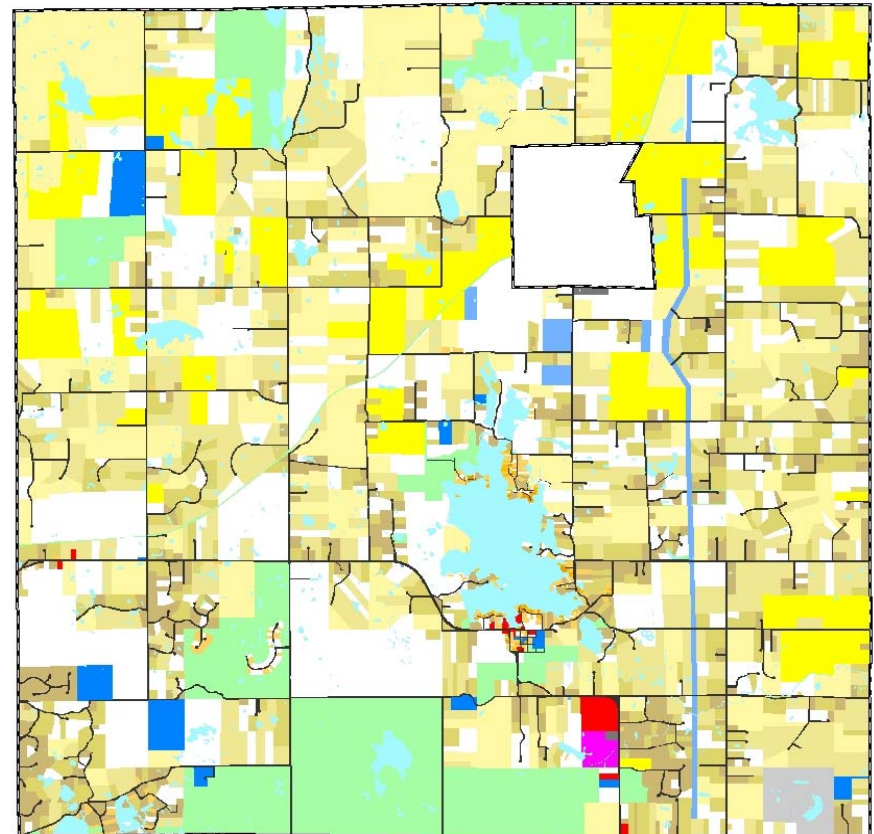
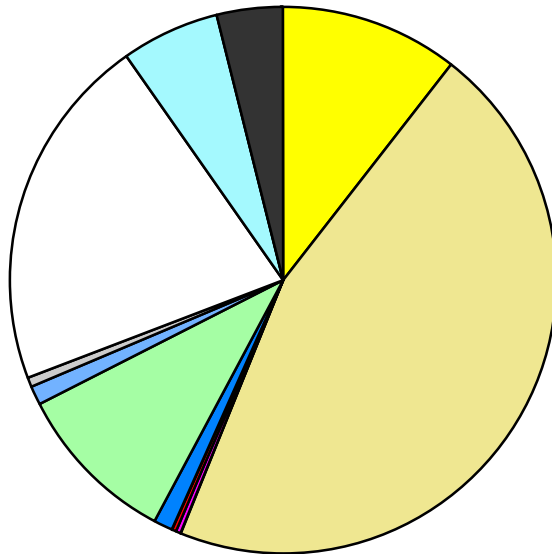


Land Use	Area (ac.)	Area (%)	Parcels	Parcels (%)
Agricultural	2,380.5	10.4%	60	2.1%
Single Family Residential	10,430.9	45.8%	2,085	72.3%
Multiple Family				
Mobile Home Park	36.7	0.2%	1	0.0%
Commercial/Office	60.3	0.3%	15	0.5%
Industrial	13.6	0.1%	2	0.1%
Public/Institutional	238.7	1.0%	19	0.7%
Recreation/Conservation	2,246.6	9.9%	64	2.2%
Transp./Utility/Comm.	200.9	0.9%	10	0.3%
Extractive	132.9	0.6%	3	0.1%
Vacant	4,853.2	21.3%	623	21.6%
Water	1,279.5	5.6%		
Railroad Right-of-Way				
Road Right-of-Way	917.1	4.0%		
<b>Total</b>	<b>22,790.8</b>	<b>100.0%</b>	<b>2,882</b>	<b>100.0%</b>

Single Family By Lot Size	Area (ac.)	Area (%)	Parcels	Parcels (%)
10 acres or greater	4,101.2	39.3%	218	10.5%
5 to 9.9 acres	3,206.6	30.7%	390	18.7%
2.5 to 4.9 acres	1,773.9	17.0%	494	23.7%
1 to 2.4 acres	1,202.5	11.5%	621	29.8%
14,000 to 43,559 sq. ft.	117.2	1.1%	202	9.7%
8,000 to 13,999 sq. ft.	18.0	0.2%	72	3.5%
Less than 8,000 sq. ft.	11.4	0.1%	88	4.2%
More than one unit per parcel				
<b>Single Family Sub-total</b>	<b>10,430.9</b>	<b>100.0%</b>	<b>2,085</b>	<b>100.0%</b>

### Land Use by Area

- Agricultural
- Single Family Residential
- Multiple Family
- Mobile Home Park
- Commercial/Office
- Industrial
- Public/Institutional
- Recreation/Conservation
- Transp./Utility/Comm.
- Extractive
- Vacant
- Water
- Railroad Right-of-Way
- Road Right-of-Way



For more information, maps, or questions about this data, please contact the Oakland County One Stop Shop at (248) 858-0720.