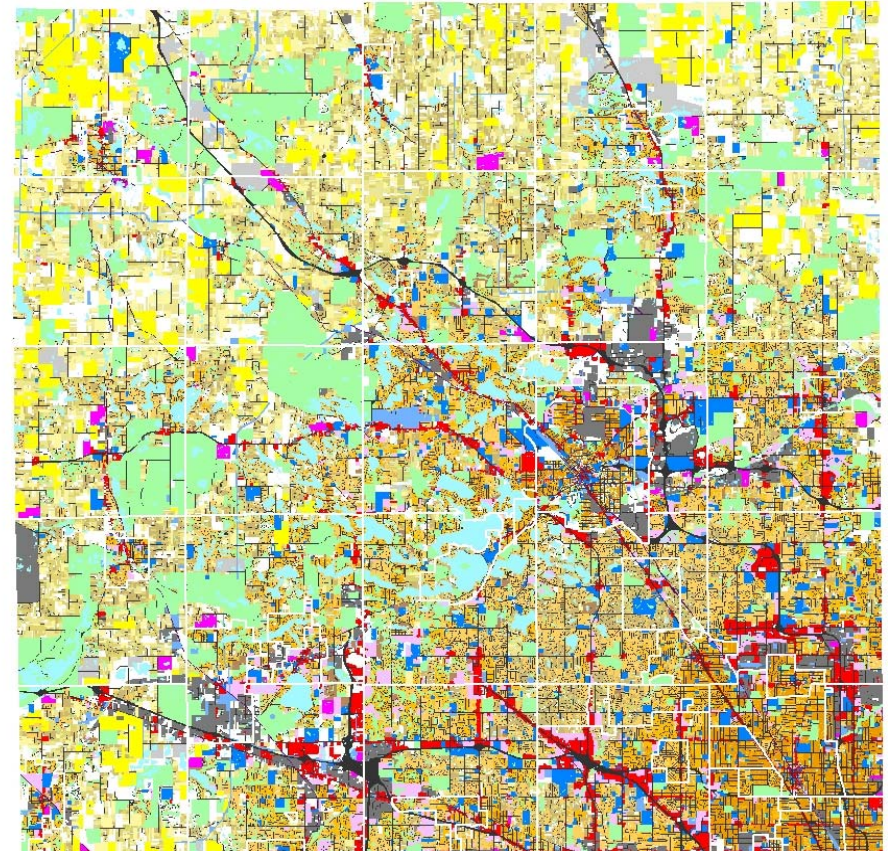
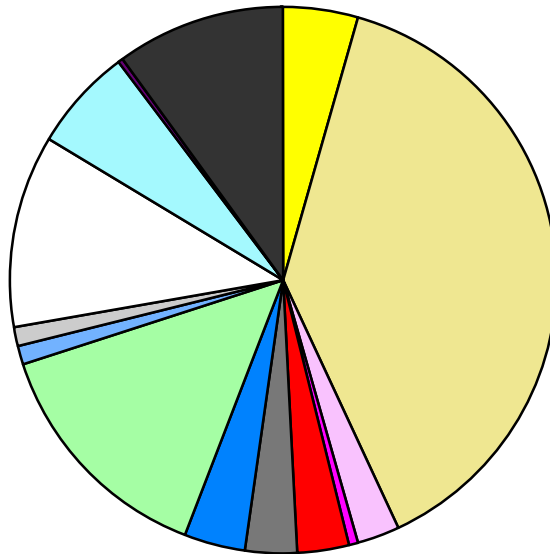


Land Use	Area (ac.)	Area (%)	Parcels	Parcels (%)
Agricultural	25,019.1	4.3%	616	0.1%
Single Family Residential	225,658.9	38.9%	357,248	83.9%
Multiple Family	13,437.5	2.3%	2,594	0.6%
Mobile Home Park	3,411.4	0.6%	240	0.1%
Commercial/Office	18,013.9	3.1%	12,667	3.0%
Industrial	18,139.6	3.1%	5,884	1.4%
Public/Institutional	20,890.4	3.6%	3,077	0.7%
Recreation/Conservation	81,862.4	14.1%	6,790	1.6%
Transp./Utility/Comm.	6,334.2	1.1%	1,203	0.3%
Extractive	5,853.3	1.0%	83	0.0%
Vacant	67,354.6	11.6%	35,599	8.4%
Water	35,035.5	6.0%		
Railroad Right-of-Way	1,105.4	0.2%		
Road Right-of-Way	58,432.5	10.1%		
Total	580,548.6	100.0%	426,001	100.0%

Single Family By Lot Size	Area (ac.)	Area (%)	Parcels	Parcels (%)
10 acres or greater	31,734.9	14.1%	1,749	0.5%
5 to 9.9 acres	30,321.0	13.4%	3,912	1.1%
2.5 to 4.9 acres	28,432.6	12.6%	7,943	2.2%
1 to 2.4 acres	36,207.7	16.0%	23,343	6.5%
14,000 to 43,559 sq. ft.	55,797.9	24.7%	110,687	31.0%
8,000 to 13,999 sq. ft.	26,808.2	11.9%	107,950	30.2%
Less than 8,000 sq. ft.	13,831.3	6.1%	101,141	28.3%
More than one unit per parcel	2,525.3	1.1%	523	0.1%
Single Family Sub-total	225,658.9	100.0%	357,248	100.0%

Land Use by Area

- Agricultural
- Single Family Residential
- Multiple Family
- Mobile Home Park
- Commercial/Office
- Industrial
- Public/Institutional
- Recreation/Conservation
- Transp./Utility/Comm.
- Extractive
- Vacant
- Water
- Railroad Right-of-Way
- Road Right-of-Way



For more information, maps, or questions about this data, please contact the Oakland County One Stop Shop at (248) 858-0720.