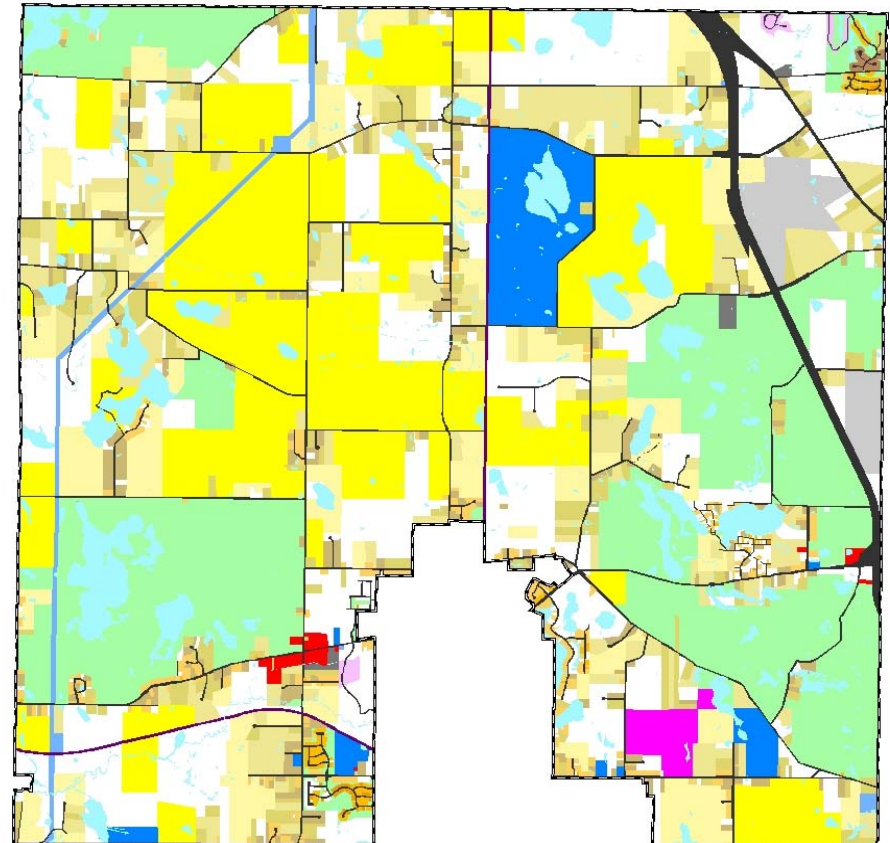
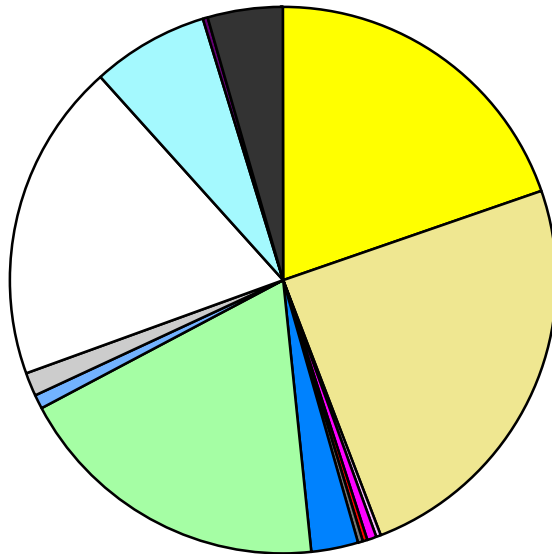


Land Use	Area (ac.)	Area (%)	Parcels	Parcels (%)
Agricultural	4,233.2	19.8%	83	3.2%
Single Family Residential	5,207.3	24.4%	1,719	66.6%
Multiple Family	39.2	0.2%	5	0.2%
Mobile Home Park	134.5	0.6%	8	0.3%
Commercial/Office	56.4	0.3%	22	0.9%
Industrial	36.5	0.2%	5	0.2%
Public/Institutional	606.5	2.8%	14	0.5%
Recreation/Conservation	4,051.8	19.0%	60	2.3%
Transp./Utility/Comm.	164.6	0.8%	17	0.7%
Extractive	330.8	1.5%	6	0.2%
Vacant	4,021.1	18.8%	644	24.9%
Water	1,465.8	6.9%		
Railroad Right-of-Way	77.2	0.4%		
Road Right-of-Way	932.5	4.4%		
<b>Total</b>	<b>21,357.4</b>	<b>100.0%</b>	<b>2,583</b>	<b>100.0%</b>

Single Family By Lot Size	Area (ac.)	Area (%)	Parcels	Parcels (%)
10 acres or greater	1,911.8	36.7%	95	5.5%
5 to 9.9 acres	1,534.7	29.5%	199	11.6%
2.5 to 4.9 acres	859.9	16.5%	227	13.2%
1 to 2.4 acres	482.7	9.3%	308	17.9%
14,000 to 43,559 sq. ft.	323.9	6.2%	528	30.7%
8,000 to 13,999 sq. ft.	68.0	1.3%	286	16.6%
Less than 8,000 sq. ft.	12.3	0.2%	74	4.3%
More than one unit per parcel	13.9	0.3%	2	0.1%
<b>Single Family Sub-total</b>	<b>5,207.3</b>	<b>100.0%</b>	<b>1,719</b>	<b>100.0%</b>

### Land Use by Area

- Agricultural
- Single Family Residential
- Multiple Family
- Mobile Home Park
- Commercial/Office
- Industrial
- Public/Institutional
- Recreation/Conservation
- Transp./Utility/Comm.
- Extractive
- Vacant
- Water
- Railroad Right-of-Way
- Road Right-of-Way



For more information, maps, or questions about this data, please contact the Oakland County One Stop Shop at (248) 858-0720.