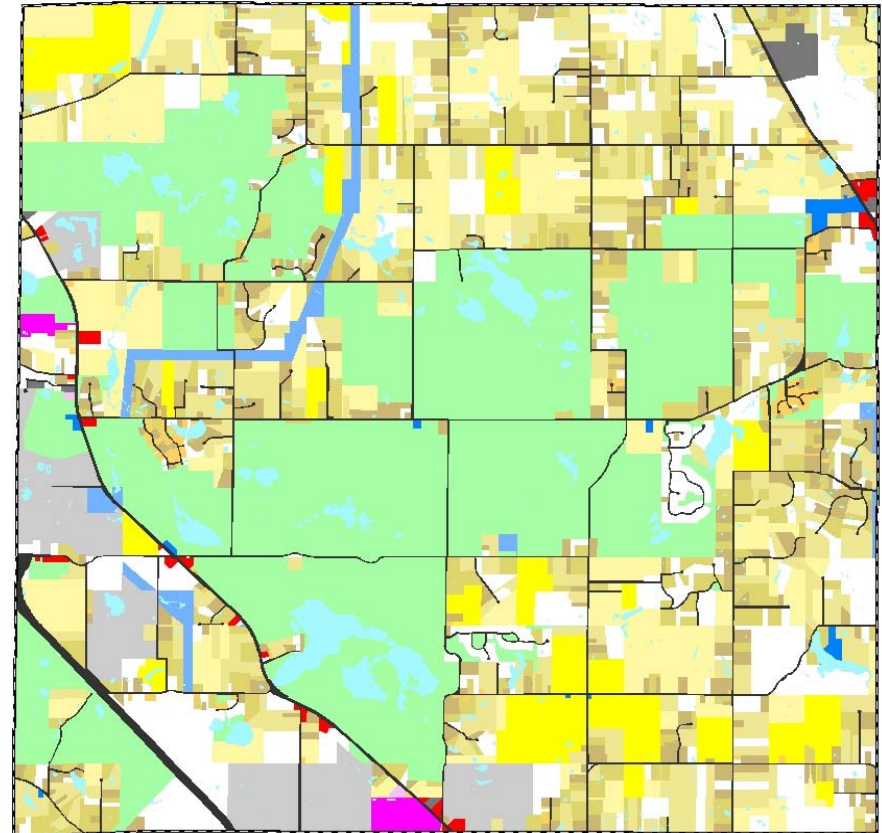
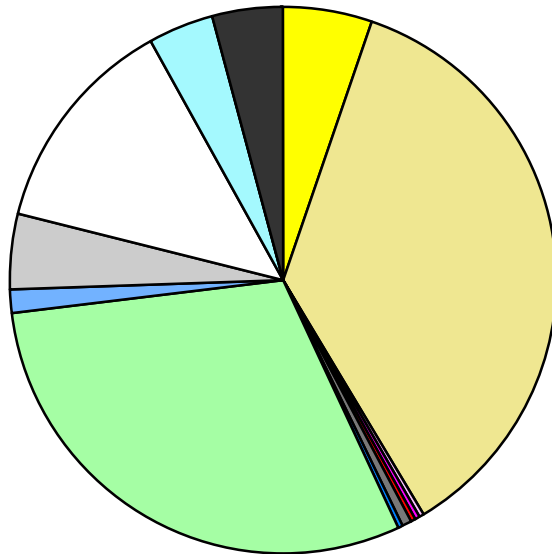


Land Use	Area (ac.)	Area (%)	Parcels	Parcels (%)
Agricultural	1,219.7	5.3%	33	1.3%
Single Family Residential	8,355.5	36.2%	1,771	71.1%
Multiple Family	7.4	0.0%	2	0.1%
Mobile Home Park	93.3	0.4%	3	0.1%
Commercial/Office	73.7	0.3%	30	1.2%
Industrial	85.9	0.4%	9	0.4%
Public/Institutional	62.2	0.3%	11	0.4%
Recreation/Conservation	6,959.9	30.2%	87	3.5%
Transp./Utility/Comm.	337.1	1.5%	17	0.7%
Extractive	1,006.3	4.4%	23	0.9%
Vacant	3,018.8	13.1%	506	20.3%
Water	905.4	3.9%		
Railroad Right-of-Way				
Road Right-of-Way	935.4	4.1%		
<b>Total</b>	<b>23,060.5</b>	<b>100.0%</b>	<b>2,492</b>	<b>100.0%</b>

Single Family By Lot Size	Area (ac.)	Area (%)	Parcels	Parcels (%)
10 acres or greater	2,881.5	34.5%	143	8.1%
5 to 9.9 acres	2,322.7	27.8%	290	16.4%
2.5 to 4.9 acres	1,684.4	20.2%	460	26.0%
1 to 2.4 acres	1,333.9	16.0%	697	39.4%
14,000 to 43,559 sq. ft.	132.2	1.6%	178	10.1%
8,000 to 13,999 sq. ft.	0.8	0.0%	3	0.2%
Less than 8,000 sq. ft.				
More than one unit per parcel				
<b>Single Family Sub-total</b>	<b>8,355.5</b>	<b>100.0%</b>	<b>1,771</b>	<b>100.0%</b>

#### Land Use by Area

- Agricultural
- Single Family Residential
- Multiple Family
- Mobile Home Park
- Commercial/Office
- Industrial
- Public/Institutional
- Recreation/Conservation
- Transp./Utility/Comm.
- Extractive
- Vacant
- Water
- Railroad Right-of-Way
- Road Right-of-Way



For more information, maps, or questions about this data, please contact the Oakland County One Stop Shop at (248) 858-0720.