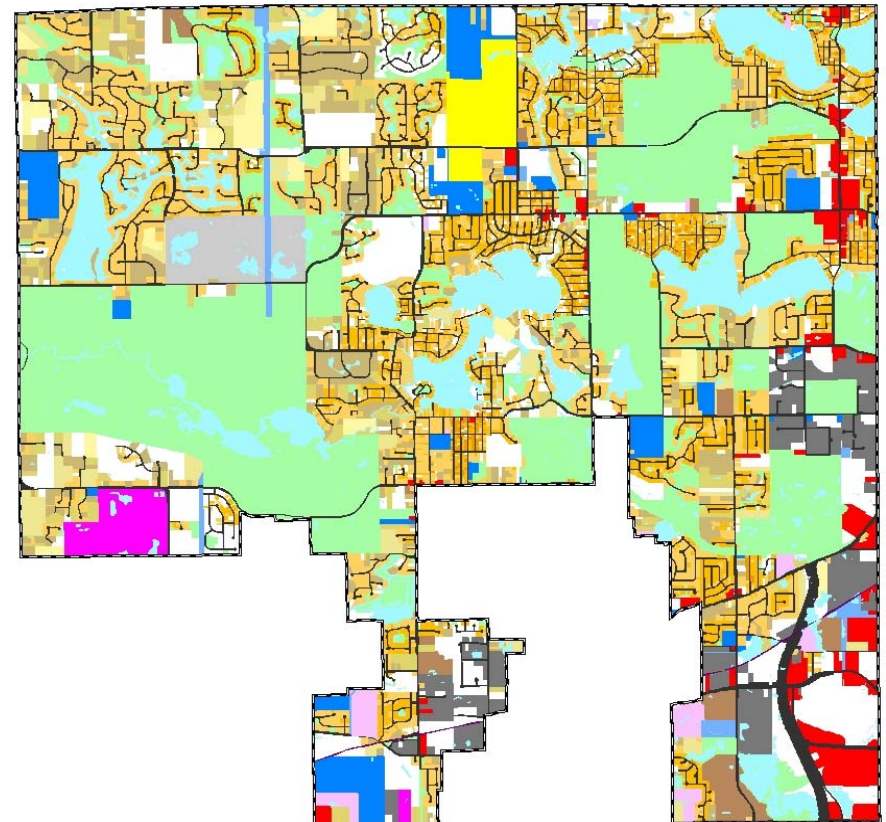
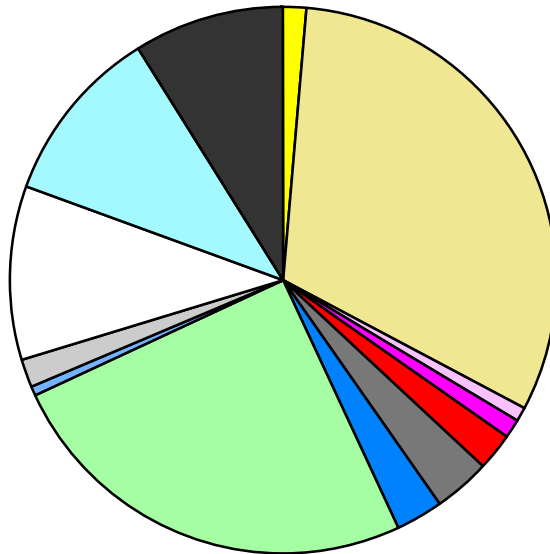


Land Use	Area (ac.)	Area (%)	Parcels	Parcels (%)
Agricultural	240.4	1.3%	6	0.0%
Single Family Residential	5,668.4	31.4%	10,726	81.1%
Multiple Family	159.8	0.9%	14	0.1%
Mobile Home Park	194.1	1.1%	4	0.0%
Commercial/Office	425.5	2.4%	239	1.8%
Industrial	572.8	3.2%	227	1.7%
Public/Institutional	538.3	3.0%	51	0.4%
Recreation/Conservation	4,475.7	24.8%	438	3.3%
Transp./Utility/Comm.	145.2	0.8%	31	0.2%
Extractive	255.7	1.4%	3	0.0%
Vacant	1,895.7	10.5%	1,492	11.3%
Water	1,874.0	10.4%		
Railroad Right-of-Way	16.0	0.1%		
Road Right-of-Way	1,604.5	8.9%		
Total	18,066.0	100.0%	13,231	100.0%

Single Family By Lot Size	Area (ac.)	Area (%)	Parcels	Parcels (%)
10 acres or greater	245.2	4.3%	17	0.2%
5 to 9.9 acres	299.3	5.3%	40	0.4%
2.5 to 4.9 acres	380.2	6.7%	112	1.0%
1 to 2.4 acres	912.2	16.1%	615	5.7%
14,000 to 43,559 sq. ft.	2,398.9	42.3%	4,977	46.4%
8,000 to 13,999 sq. ft.	1,094.4	19.3%	4,105	38.3%
Less than 8,000 sq. ft.	119.9	2.1%	845	7.9%
More than one unit per parcel	218.4	3.9%	15	0.1%
Single Family Sub-total	5,668.4	100.0%	10,726	100.0%

Land Use by Area

- Agricultural
- Single Family Residential
- Multiple Family
- Mobile Home Park
- Commercial/Office
- Industrial
- Public/Institutional
- Recreation/Conservation
- Transp./Utility/Comm.
- Extractive
- Vacant
- Water
- Railroad Right-of-Way
- Road Right-of-Way



For more information, maps, or questions about this data, please contact the Oakland County One Stop Shop at (248) 858-0720.