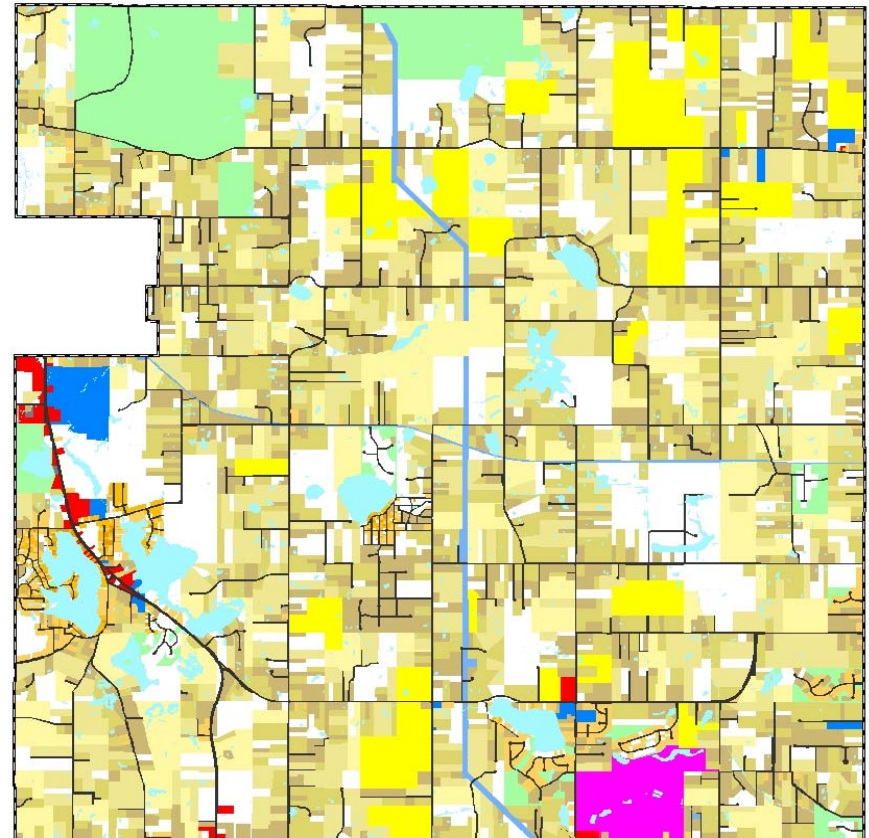
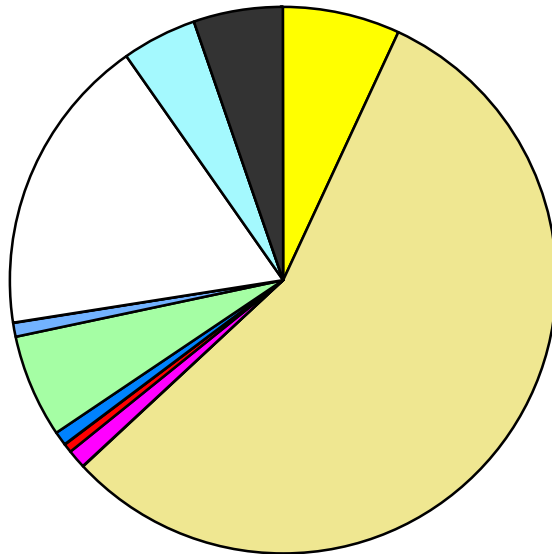


Land Use	Area (ac.)	Area (%)	Parcels	Parcels (%)
Agricultural	1,536.1	6.9%	51	0.9%
Single Family Residential	12,558.8	56.1%	4,156	76.0%
Multiple Family				
Mobile Home Park	272.0	1.2%	4	0.1%
Commercial/Office	108.6	0.5%	61	1.1%
Industrial	3.0	0.0%	2	0.0%
Public/Institutional	191.9	0.9%	20	0.4%
Recreation/Conservation	1,372.1	6.1%	198	3.6%
Transp./Utility/Comm.	194.5	0.9%	11	0.2%
Extractive				
Vacant	3,949.9	17.6%	962	17.6%
Water	1,039.4	4.6%		
Railroad Right-of-Way				
Road Right-of-Way	1,161.7	5.2%		
Total	22,388.0	100.0%	5,465	100.0%

Single Family By Lot Size	Area (ac.)	Area (%)	Parcels	Parcels (%)
10 acres or greater	2,455.8	19.6%	146	3.5%
5 to 9.9 acres	3,217.5	25.6%	422	10.2%
2.5 to 4.9 acres	3,473.1	27.7%	977	23.5%
1 to 2.4 acres	2,896.8	23.1%	1,414	34.0%
14,000 to 43,559 sq. ft.	411.2	3.3%	701	16.9%
8,000 to 13,999 sq. ft.	84.2	0.7%	350	8.4%
Less than 8,000 sq. ft.	20.2	0.2%	146	3.5%
More than one unit per parcel				
Single Family Sub-total	12,558.8	100.0%	4,156	100.0%

Land Use by Area

- Agricultural
- Single Family Residential
- Multiple Family
- Mobile Home Park
- Commercial/Office
- Industrial
- Public/Institutional
- Recreation/Conservation
- Transp./Utility/Comm.
- Extractive
- Vacant
- Water
- Railroad Right-of-Way
- Road Right-of-Way



For more information, maps, or questions about this data, please contact the Oakland County One Stop Shop at (248) 858-0720.