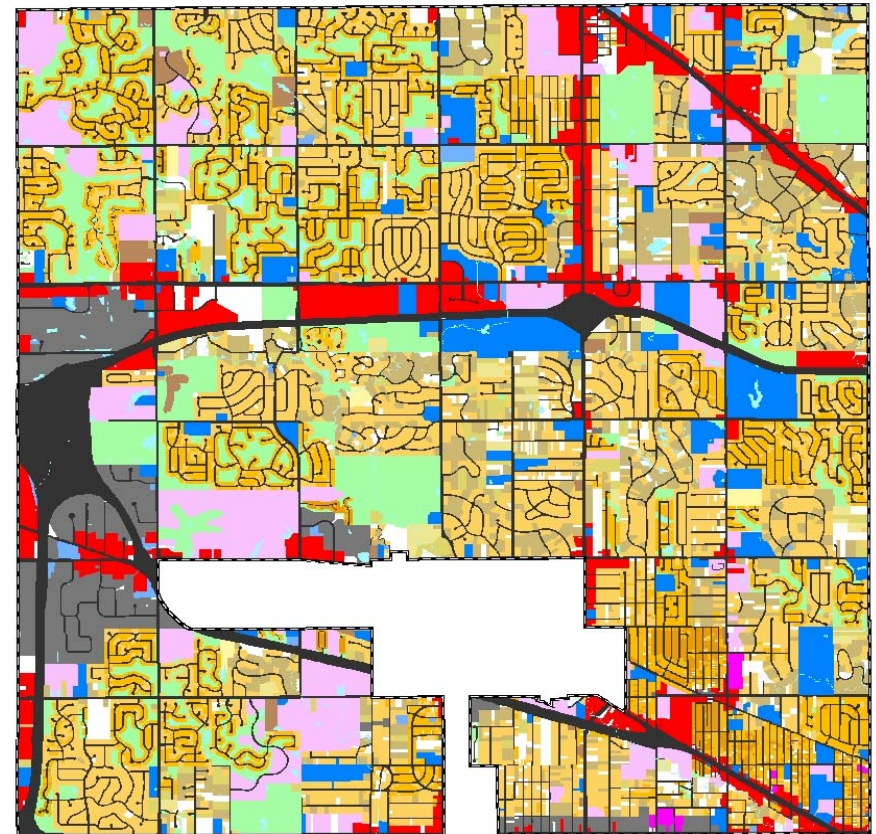
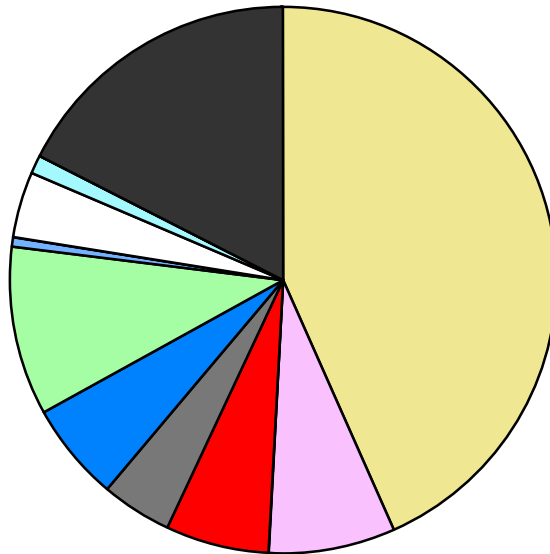


Land Use	Area (ac.)	Area (%)	Parcels	Parcels (%)
Agricultural				
Single Family Residential	9,261.2	43.5%	20,166	87.7%
Multiple Family	1,545.4	7.3%	157	0.7%
Mobile Home Park	38.2	0.2%	9	0.0%
Commercial/Office	1,293.7	6.1%	646	2.8%
Industrial	867.3	4.1%	377	1.6%
Public/Institutional	1,260.6	5.9%	168	0.7%
Recreation/Conservation	2,149.9	10.1%	350	1.5%
Transp./Utility/Comm.	81.9	0.4%	38	0.2%
Extractive				
Vacant	842.1	4.0%	1,085	4.7%
Water	244.4	1.1%		
Railroad Right-of-Way				
Road Right-of-Way	3,723.8	17.5%		
<b>Total</b>	<b>21,308.5</b>	<b>100.0%</b>	<b>22,996</b>	<b>100.0%</b>

Single Family By Lot Size	Area (ac.)	Area (%)	Parcels	Parcels (%)
10 acres or greater	52.8	0.6%	4	0.0%
5 to 9.9 acres	150.7	1.6%	24	0.1%
2.5 to 4.9 acres	373.9	4.0%	109	0.5%
1 to 2.4 acres	1,511.3	16.3%	1,044	5.2%
14,000 to 43,559 sq. ft.	4,538.8	49.0%	8,912	44.2%
8,000 to 13,999 sq. ft.	2,261.9	24.4%	8,637	42.8%
Less than 8,000 sq. ft.	202.7	2.2%	1,351	6.7%
More than one unit per parcel	169.1	1.8%	85	0.4%
<b>Single Family Sub-total</b>	<b>9,261.2</b>	<b>100.0%</b>	<b>20,166</b>	<b>100.0%</b>

### Land Use by Area

- Agricultural
- Single Family Residential
- Multiple Family
- Mobile Home Park
- Commercial/Office
- Industrial
- Public/Institutional
- Recreation/Conservation
- Transp./Utility/Comm.
- Extractive
- Vacant
- Water
- Railroad Right-of-Way
- Road Right-of-Way



For more information, maps, or questions about this data, please contact the Oakland County One Stop Shop at (248) 858-0720.