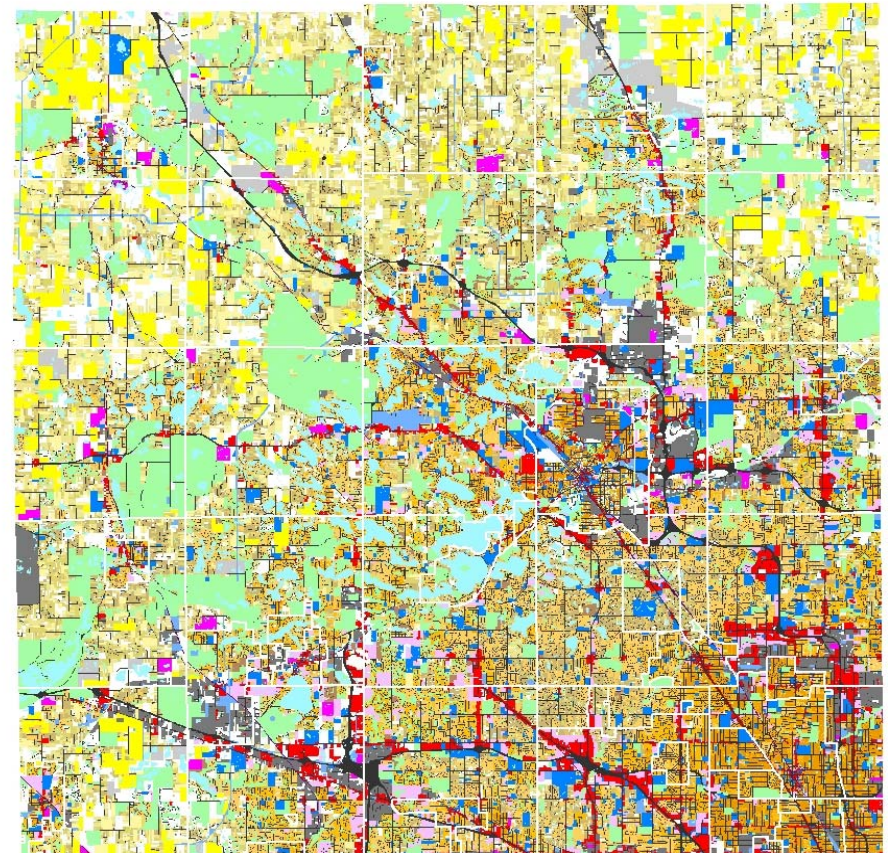
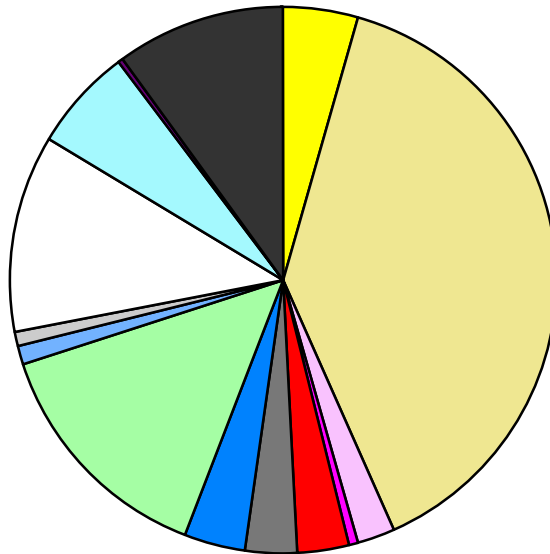


Land Use	Area (ac.)	Area (%)	Parcels	Parcels (%)
Agricultural	25,363.1	4.4%	621	0.1%
Single Family Residential	225,514.2	38.8%	355,702	83.6%
Multiple Family	13,371.6	2.3%	2,572	0.6%
Mobile Home Park	3,422.6	0.6%	241	0.1%
Commercial/Office	18,031.2	3.1%	12,697	3.0%
Industrial	18,141.4	3.1%	5,871	1.4%
Public/Institutional	20,756.1	3.6%	3,074	0.7%
Recreation/Conservation	81,225.7	14.0%	6,734	1.6%
Transp./Utility/Comm.	6,333.8	1.1%	1,200	0.3%
Extractive	5,945.5	1.0%	84	0.0%
Vacant	68,044.4	11.7%	36,450	8.6%
Water	35,034.6	6.0%		
Railroad Right-of-Way	1,107.0	0.2%		
Road Right-of-Way	58,227.4	10.0%		
<b>Total</b>	<b>580,518.8</b>	<b>100.0%</b>	<b>425,246</b>	<b>100.0%</b>

Single Family By Lot Size	Area (ac.)	Area (%)	Parcels	Parcels (%)
10 acres or greater	32,509.9	14.4%	1,778	0.5%
5 to 9.9 acres	30,208.0	13.4%	3,897	1.1%
2.5 to 4.9 acres	28,391.7	12.6%	7,931	2.2%
1 to 2.4 acres	35,982.8	16.0%	23,201	6.5%
14,000 to 43,559 sq. ft.	55,538.7	24.6%	110,167	31.0%
8,000 to 13,999 sq. ft.	26,671.0	11.8%	107,409	30.2%
Less than 8,000 sq. ft.	13,784.5	6.1%	100,799	28.3%
More than one unit per parcel	2,427.5	1.1%	520	0.1%
<b>Single Family Sub-total</b>	<b>225,514.2</b>	<b>100.0%</b>	<b>355,702</b>	<b>100.0%</b>

### Land Use by Area

- Agricultural
- Single Family Residential
- Multiple Family
- Mobile Home Park
- Commercial/Office
- Industrial
- Public/Institutional
- Recreation/Conservation
- Transp./Utility/Comm.
- Extractive
- Vacant
- Water
- Railroad Right-of-Way
- Road Right-of-Way



For more information, maps, or questions about this data, please contact the Oakland County One Stop Shop at (248) 858-0720.