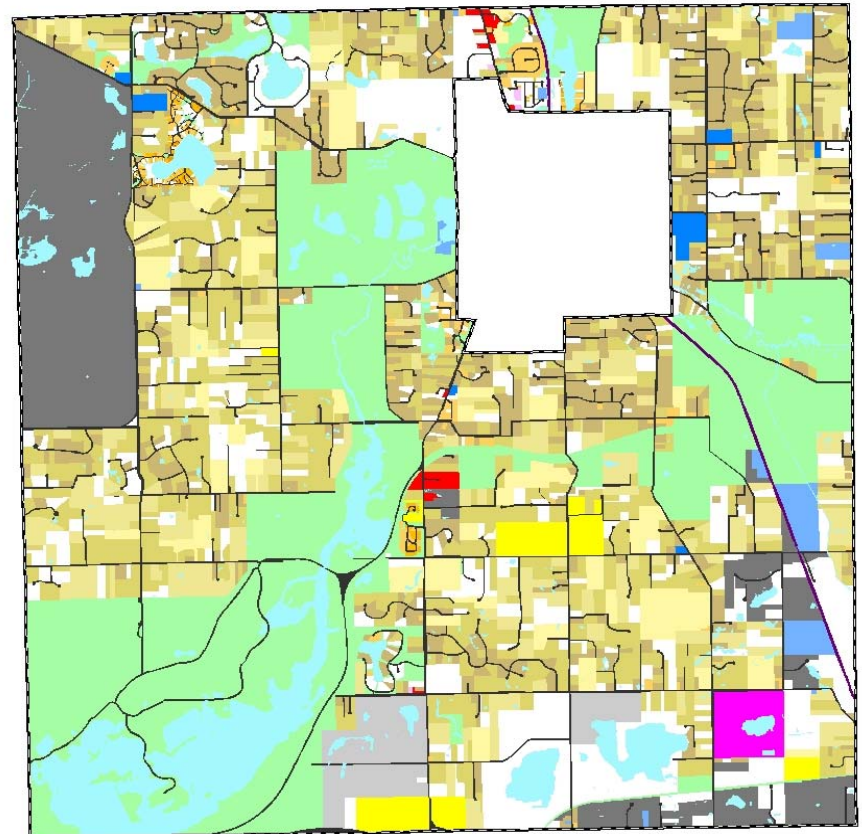
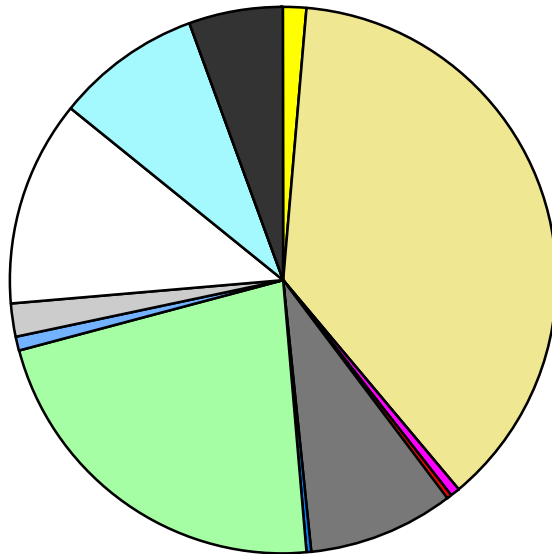


Land Use	Area (ac.)	Area (%)	Parcels	Parcels (%)
Agricultural	291.5	1.4%	8	0.2%
Single Family Residential	7,813.8	37.4%	2,931	75.0%
Multiple Family	6.3	0.0%	3	0.1%
Mobile Home Park	134.9	0.6%	2	0.1%
Commercial/Office	46.6	0.2%	13	0.3%
Industrial	1,788.5	8.6%	98	2.5%
Public/Institutional	84.5	0.4%	7	0.2%
Recreation/Conservation	4,627.3	22.1%	121	3.1%
Transp./Utility/Comm.	193.4	0.9%	15	0.4%
Extractive	388.6	1.9%	7	0.2%
Vacant	2,575.2	12.3%	705	18.0%
Water	1,758.1	8.4%		
Railroad Right-of-Way	47.6	0.2%		
Road Right-of-Way	1,135.4	5.4%		
Total	20,891.6	100.0%	3,910	100.0%

Single Family By Lot Size	Area (ac.)	Area (%)	Parcels	Parcels (%)
10 acres or greater	994.3	12.7%	63	2.1%
5 to 9.9 acres	1,558.8	19.9%	210	7.2%
2.5 to 4.9 acres	2,898.0	37.1%	861	29.4%
1 to 2.4 acres	2,119.6	27.1%	1,293	44.1%
14,000 to 43,559 sq. ft.	203.1	2.6%	314	10.7%
8,000 to 13,999 sq. ft.	31.9	0.4%	125	4.3%
Less than 8,000 sq. ft.	8.1	0.1%	65	2.2%
More than one unit per parcel				
Single Family Sub-total	7,813.8	100.0%	2,931	100.0%

Land Use by Area

- Agricultural
- Single Family Residential
- Multiple Family
- Mobile Home Park
- Commercial/Office
- Industrial
- Public/Institutional
- Recreation/Conservation
- Transp./Utility/Comm.
- Extractive
- Vacant
- Water
- Railroad Right-of-Way
- Road Right-of-Way



For more information, maps, or questions about this data, please contact the Oakland County One Stop Shop at (248) 858-0720.