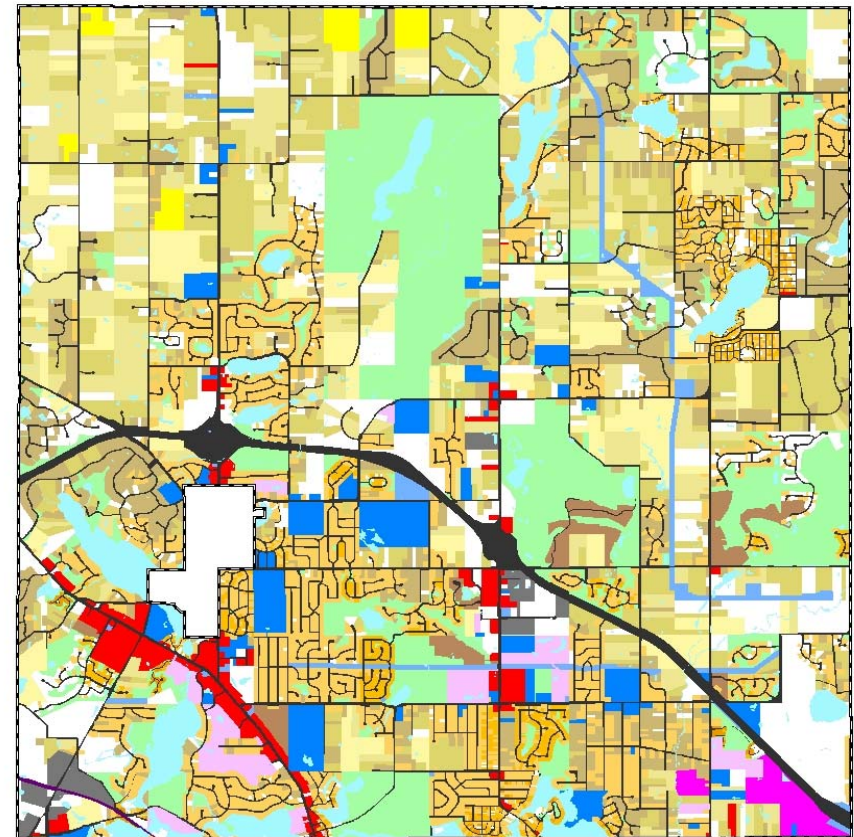
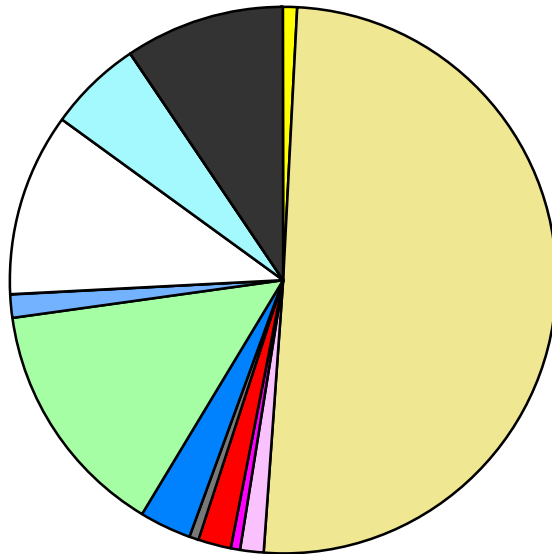


Land Use	Area (ac.)	Area (%)	Parcels	Parcels (%)
Agricultural	173.4	0.7%	11	0.1%
Single Family Residential	11,699.9	50.4%	10,119	83.7%
Multiple Family	323.7	1.4%	24	0.2%
Mobile Home Park	137.3	0.6%	3	0.0%
Commercial/Office	408.6	1.8%	225	1.9%
Industrial	165.8	0.7%	32	0.3%
Public/Institutional	725.6	3.1%	73	0.6%
Recreation/Conservation	3,250.9	14.0%	294	2.4%
Transp./Utility/Comm.	306.2	1.3%	53	0.4%
Extractive				
Vacant	2,559.6	11.0%	1,259	10.4%
Water	1,257.3	5.4%		
Railroad Right-of-Way	14.7	0.1%		
Road Right-of-Way	2,192.9	9.4%		
Total	23,216.0	100.0%	12,093	100.0%

Single Family By Lot Size	Area (ac.)	Area (%)	Parcels	Parcels (%)
10 acres or greater	1,464.0	12.5%	85	0.8%
5 to 9.9 acres	1,934.5	16.5%	254	2.5%
2.5 to 4.9 acres	2,622.9	22.4%	754	7.5%
1 to 2.4 acres	2,157.8	18.4%	1,425	14.1%
14,000 to 43,559 sq. ft.	2,842.0	24.3%	5,796	57.3%
8,000 to 13,999 sq. ft.	370.4	3.2%	1,435	14.2%
Less than 8,000 sq. ft.	45.3	0.4%	323	3.2%
More than one unit per parcel	263.0	2.2%	47	0.5%
Single Family Sub-total	11,699.9	100.0%	10,119	100.0%

Land Use by Area

- Agricultural
- Single Family Residential
- Multiple Family
- Mobile Home Park
- Commercial/Office
- Industrial
- Public/Institutional
- Recreation/Conservation
- Transp./Utility/Comm.
- Extractive
- Vacant
- Water
- Railroad Right-of-Way
- Road Right-of-Way



For more information, maps, or questions about this data, please contact the Oakland County One Stop Shop at (248) 858-0720.