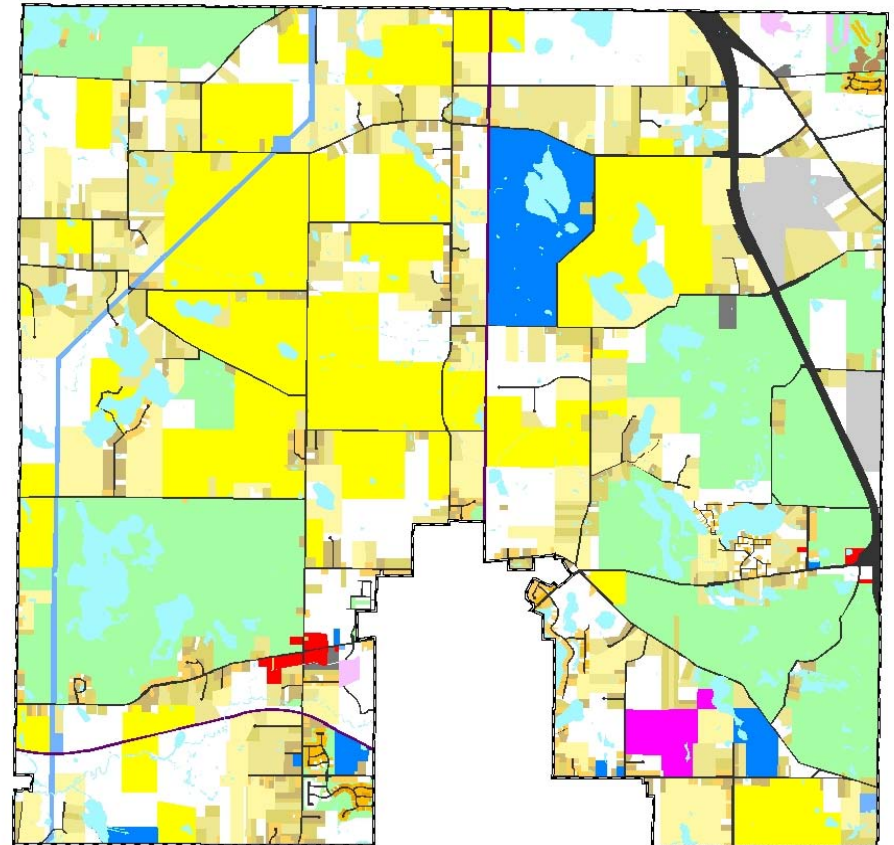
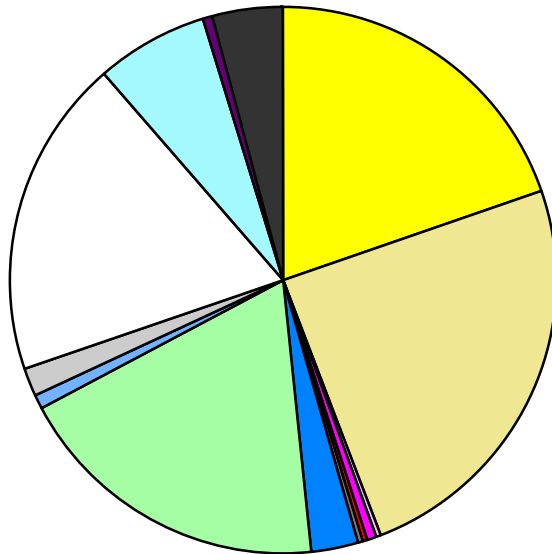


Land Use	Area (ac.)	Area (%)	Parcels	Parcels (%)
Agricultural	4,236.3	19.8%	83	3.2%
Single Family Residential	5,199.9	24.4%	1,676	65.0%
Multiple Family	45.9	0.2%	3	0.1%
Mobile Home Park	134.0	0.6%	8	0.3%
Commercial/Office	55.9	0.3%	21	0.8%
Industrial	36.4	0.2%	5	0.2%
Public/Institutional	607.3	2.8%	15	0.6%
Recreation/Conservation	4,046.5	18.9%	60	2.3%
Transp./Utility/Comm.	169.7	0.8%	16	0.6%
Extractive	330.3	1.5%	6	0.2%
Vacant	4,048.4	19.0%	687	26.6%
Water	1,464.5	6.9%		
Railroad Right-of-Way	77.9	0.4%		
Road Right-of-Way	901.9	4.2%		
Total	21,354.8	100.0%	2,580	100.0%

Single Family By Lot Size	Area (ac.)	Area (%)	Parcels	Parcels (%)
10 acres or greater	1,980.7	38.1%	99	5.9%
5 to 9.9 acres	1,492.7	28.7%	195	11.6%
2.5 to 4.9 acres	844.6	16.2%	224	13.4%
1 to 2.4 acres	476.9	9.2%	307	18.3%
14,000 to 43,559 sq. ft.	312.8	6.0%	511	30.5%
8,000 to 13,999 sq. ft.	64.9	1.2%	271	16.2%
Less than 8,000 sq. ft.	11.2	0.2%	67	4.0%
More than one unit per parcel	16.1	0.3%	2	0.1%
Single Family Sub-total	5,199.9	100.0%	1,676	100.0%

Land Use by Area

- Agricultural
- Single Family Residential
- Multiple Family
- Mobile Home Park
- Commercial/Office
- Industrial
- Public/Institutional
- Recreation/Conservation
- Transp./Utility/Comm.
- Extractive
- Vacant
- Water
- Railroad Right-of-Way
- Road Right-of-Way



For more information, maps, or questions about this data, please contact the Oakland County One Stop Shop at (248) 858-0720.