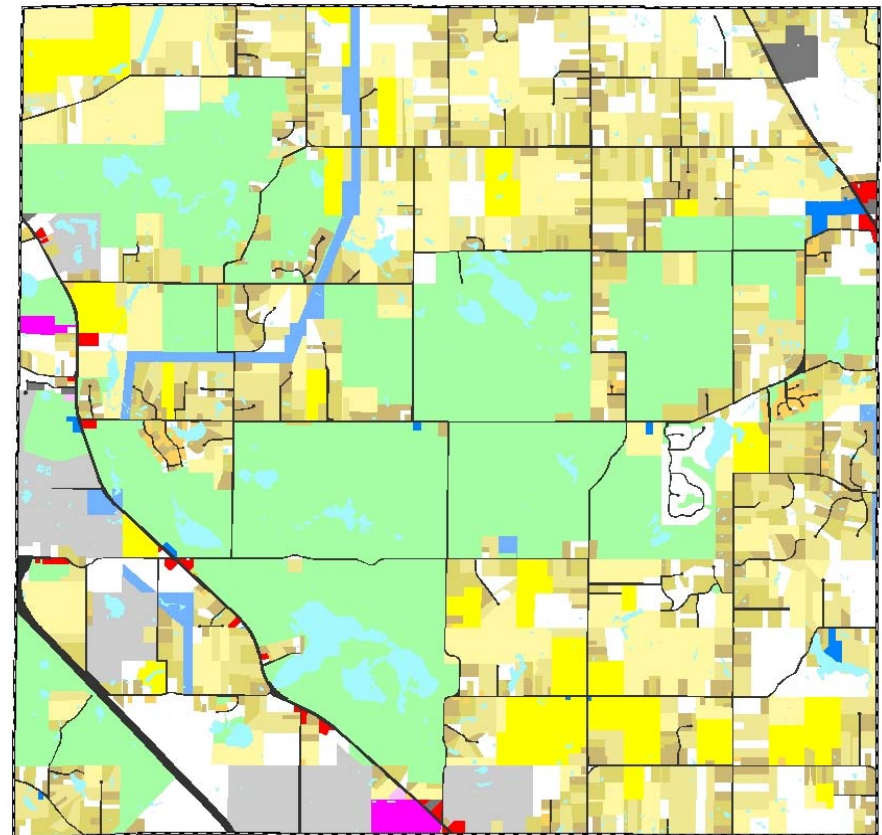
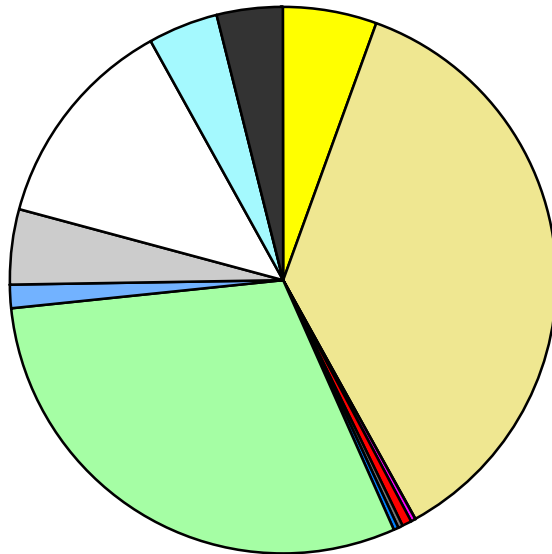


Land Use	Area (ac.)	Area (%)	Parcels	Parcels (%)
Agricultural	1,292.9	5.6%	34	1.4%
Single Family Residential	8,371.3	36.3%	1,756	72.1%
Multiple Family	7.3	0.0%	2	0.1%
Mobile Home Park	90.6	0.4%	3	0.1%
Commercial/Office	72.9	0.3%	30	1.2%
Industrial	85.9	0.4%	9	0.4%
Public/Institutional	62.1	0.3%	11	0.5%
Recreation/Conservation	6,917.3	30.0%	82	3.4%
Transp./Utility/Comm.	337.0	1.5%	17	0.7%
Extractive	1,003.0	4.3%	23	0.9%
Vacant	2,990.4	13.0%	468	19.2%
Water	905.4	3.9%		
Railroad Right-of-Way				
Road Right-of-Way	924.4	4.0%		
<b>Total</b>	<b>23,060.4</b>	<b>100.0%</b>	<b>2,435</b>	<b>100.0%</b>

Single Family By Lot Size	Area (ac.)	Area (%)	Parcels	Parcels (%)
10 acres or greater	2,959.8	35.4%	146	8.3%
5 to 9.9 acres	2,296.6	27.4%	286	16.3%
2.5 to 4.9 acres	1,658.9	19.8%	452	25.7%
1 to 2.4 acres	1,321.3	15.8%	689	39.2%
14,000 to 43,559 sq. ft.	133.9	1.6%	180	10.3%
8,000 to 13,999 sq. ft.	0.8	0.0%	3	0.2%
Less than 8,000 sq. ft.				
More than one unit per parcel				
<b>Single Family Sub-total</b>	<b>8,371.3</b>	<b>100.0%</b>	<b>1,756</b>	<b>100.0%</b>

### Land Use by Area

- Agricultural
- Single Family Residential
- Multiple Family
- Mobile Home Park
- Commercial/Office
- Industrial
- Public/Institutional
- Recreation/Conservation
- Transp./Utility/Comm.
- Extractive
- Vacant
- Water
- Railroad Right-of-Way
- Road Right-of-Way



For more information, maps, or questions about this data, please contact the Oakland County One Stop Shop at (248) 858-0720.