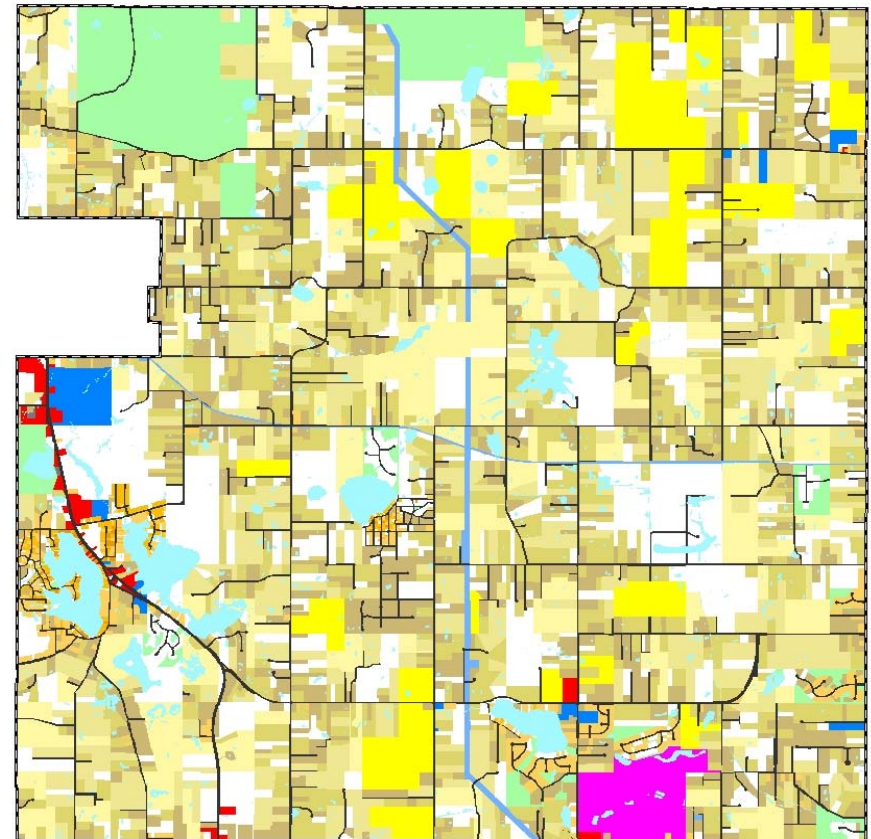
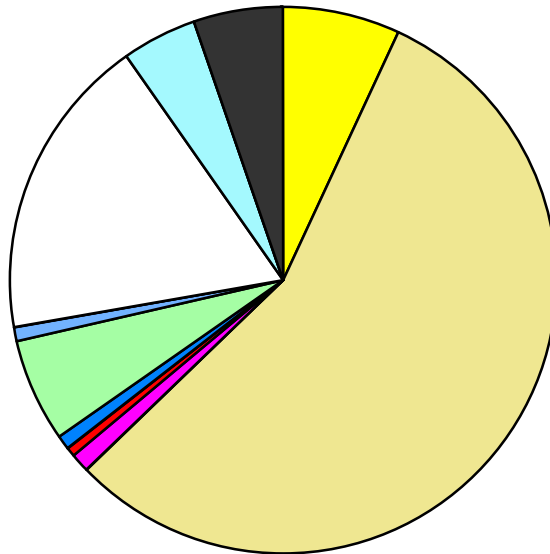


Land Use	Area (ac.)	Area (%)	Parcels	Parcels (%)
Agricultural	1,536.1	6.9%	49	0.9%
Single Family Residential	12,519.9	55.9%	4,107	75.2%
Multiple Family				
Mobile Home Park	272.0	1.2%	4	0.1%
Commercial/Office	108.6	0.5%	61	1.1%
Industrial	3.0	0.0%	2	0.0%
Public/Institutional	176.5	0.8%	19	0.3%
Recreation/Conservation	1,368.2	6.1%	198	3.6%
Transp./Utility/Comm.	194.5	0.9%	11	0.2%
Extractive				
Vacant	4,006.1	17.9%	1,009	18.5%
Water	1,039.4	4.6%		
Railroad Right-of-Way				
Road Right-of-Way	1,162.0	5.2%		
Total	22,386.2	100.0%	5,460	100.0%

Single Family By Lot Size	Area (ac.)	Area (%)	Parcels	Parcels (%)
10 acres or greater	2,498.8	20.0%	147	3.6%
5 to 9.9 acres	3,229.4	25.8%	423	10.3%
2.5 to 4.9 acres	3,435.0	27.4%	965	23.5%
1 to 2.4 acres	2,846.6	22.7%	1,391	33.9%
14,000 to 43,559 sq. ft.	409.1	3.3%	699	17.0%
8,000 to 13,999 sq. ft.	81.5	0.7%	340	8.3%
Less than 8,000 sq. ft.	19.5	0.2%	142	3.5%
More than one unit per parcel				
Single Family Sub-total	12,519.9	100.0%	4,107	100.0%

Land Use by Area

- Agricultural
- Single Family Residential
- Multiple Family
- Mobile Home Park
- Commercial/Office
- Industrial
- Public/Institutional
- Recreation/Conservation
- Transp./Utility/Comm.
- Extractive
- Vacant
- Water
- Railroad Right-of-Way
- Road Right-of-Way



For more information, maps, or questions about this data, please contact the Oakland County One Stop Shop at (248) 858-0720.