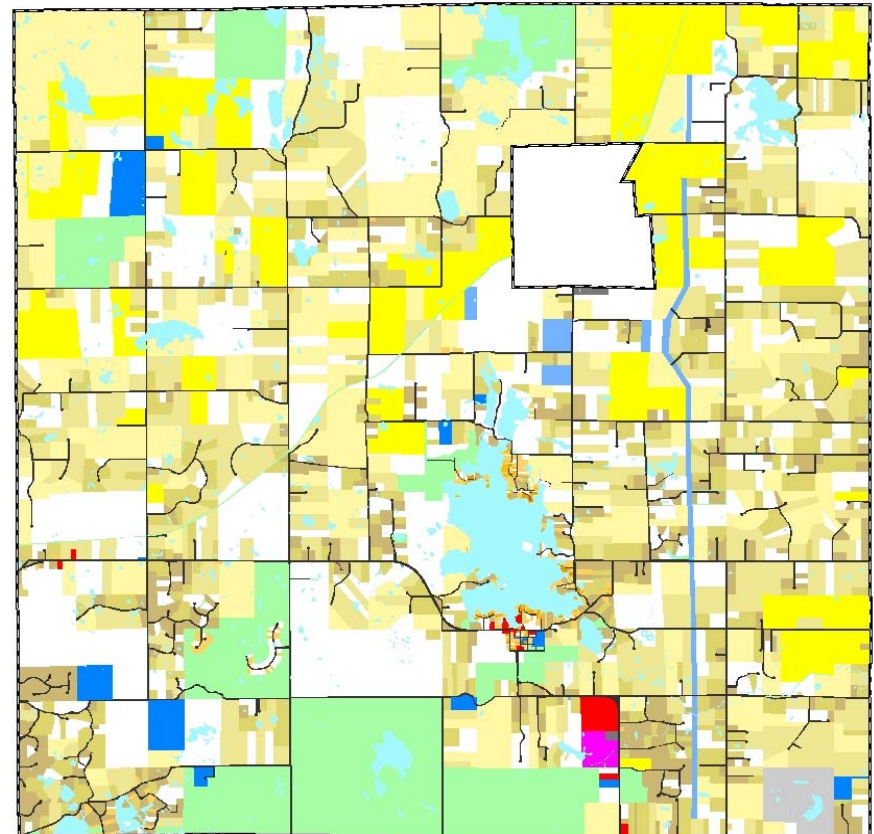
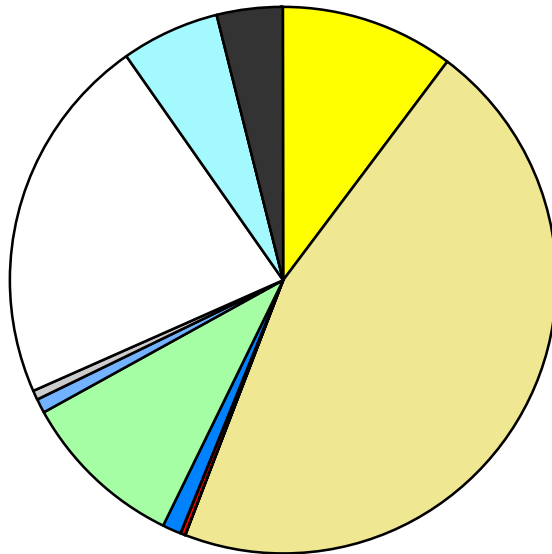


| Land Use | Area (ac.) | Area (%) | Parcels | Parcels (%) |
|---------------------------|-----------------|---------------|--------------|---------------|
| Agricultural | 2,370.5 | 10.4% | 59 | 2.1% |
| Single Family Residential | 10,332.3 | 45.3% | 2,062 | 71.9% |
| Multiple Family | | | | |
| Mobile Home Park | 36.7 | 0.2% | 1 | 0.0% |
| Commercial/Office | 60.2 | 0.3% | 15 | 0.5% |
| Industrial | 13.6 | 0.1% | 2 | 0.1% |
| Public/Institutional | 237.9 | 1.0% | 19 | 0.7% |
| Recreation/Conservation | 2,192.0 | 9.6% | 63 | 2.2% |
| Transp./Utility/Comm. | 200.9 | 0.9% | 10 | 0.3% |
| Extractive | 133.0 | 0.6% | 3 | 0.1% |
| Vacant | 5,034.0 | 22.1% | 635 | 22.1% |
| Water | 1,279.6 | 5.6% | | |
| Railroad Right-of-Way | | | | |
| Road Right-of-Way | 915.7 | 4.0% | | |
| Total | 22,806.5 | 100.0% | 2,869 | 100.0% |

| Single Family By Lot Size | Area (ac.) | Area (%) | Parcels | Parcels (%) |
|--------------------------------|-----------------|---------------|--------------|---------------|
| 10 acres or greater | 4,057.3 | 39.3% | 217 | 10.5% |
| 5 to 9.9 acres | 3,170.5 | 30.7% | 384 | 18.6% |
| 2.5 to 4.9 acres | 1,769.7 | 17.1% | 492 | 23.9% |
| 1 to 2.4 acres | 1,190.9 | 11.5% | 614 | 29.8% |
| 14,000 to 43,559 sq. ft. | 115.2 | 1.1% | 197 | 9.6% |
| 8,000 to 13,999 sq. ft. | 17.3 | 0.2% | 69 | 3.3% |
| Less than 8,000 sq. ft. | 11.4 | 0.1% | 89 | 4.3% |
| More than one unit per parcel | | | | |
| Single Family Sub-total | 10,332.3 | 100.0% | 2,062 | 100.0% |

Land Use by Area

- Agricultural
- Single Family Residential
- Multiple Family
- Mobile Home Park
- Commercial/Office
- Industrial
- Public/Institutional
- Recreation/Conservation
- Transp./Utility/Comm.
- Extractive
- Vacant
- Water
- Railroad Right-of-Way
- Road Right-of-Way



For more information, maps, or questions about this data, please contact the Oakland County One Stop Shop at (248) 858-0720.