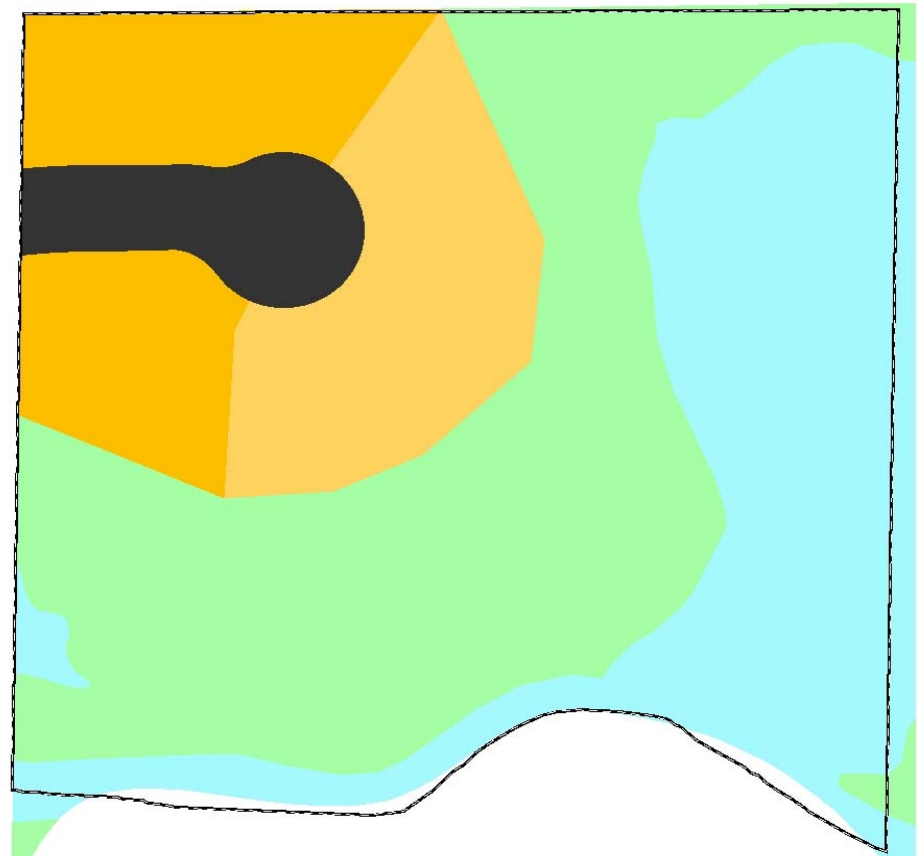
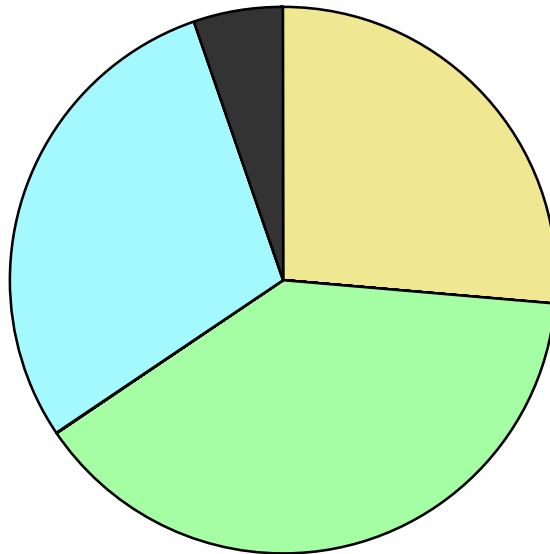


Land Use	Area (ac.)	Area (%)	Parcels	Parcels (%)
Agricultural				
Single Family Residential	2.4	26.5%	8	88.9%
Multiple Family				
Mobile Home Park				
Commercial/Office				
Industrial				
Public/Institutional				
Recreation/Conservation	3.5	39.0%	1	11.1%
Transp./Utility/Comm.				
Extractive				
Vacant				
Water	2.6	29.3%		
Railroad Right-of-Way				
Road Right-of-Way	0.5	5.3%		
<b>Total</b>	<b>9.0</b>	<b>100.0%</b>	<b>9</b>	<b>100.0%</b>

Single Family By Lot Size	Area (ac.)	Area (%)	Parcels	Parcels (%)
10 acres or greater				
5 to 9.9 acres				
2.5 to 4.9 acres				
1 to 2.4 acres				
14,000 to 43,559 sq. ft.	1.1	46.5%	3	37.5%
8,000 to 13,999 sq. ft.	1.3	53.5%	5	62.5%
Less than 8,000 sq. ft.				
More than one unit per parcel				
<b>Single Family Sub-total</b>	<b>2.4</b>	<b>100.0%</b>	<b>8</b>	<b>100.0%</b>

**Land Use by Area**

- Agricultural
- Single Family Residential
- Multiple Family
- Mobile Home Park
- Commercial/Office
- Industrial
- Public/Institutional
- Recreation/Conservation
- Transp./Utility/Comm.
- Extractive
- Vacant
- Water
- Railroad Right-of-Way
- Road Right-of-Way



For more information, maps, or questions about this data, please contact the Oakland County One Stop Shop at (248) 858-0720.