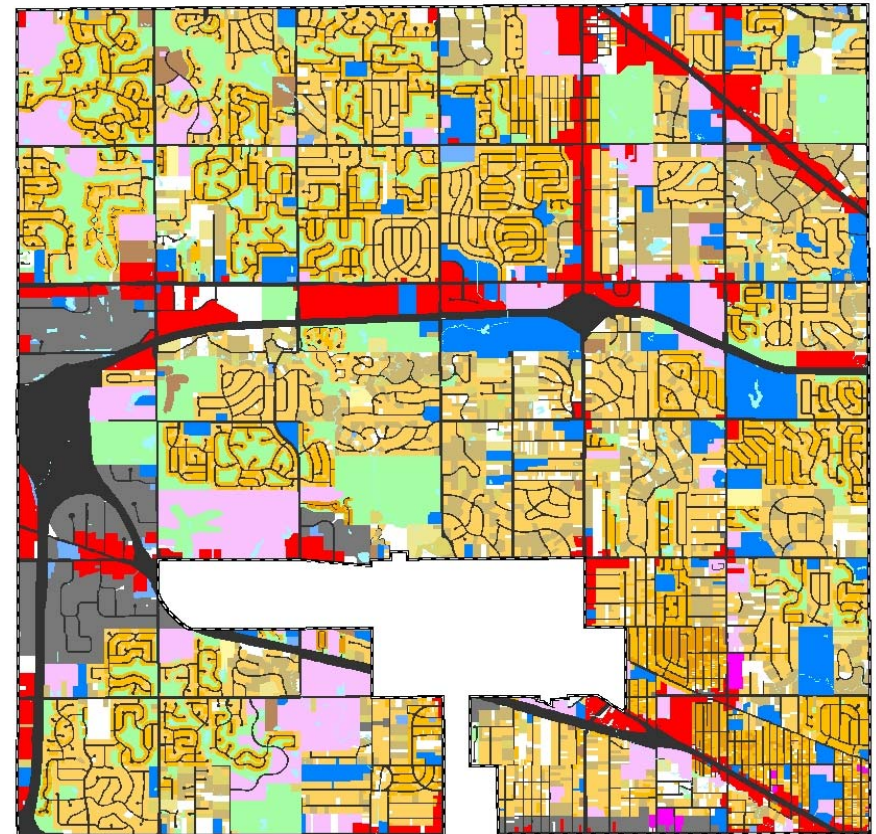
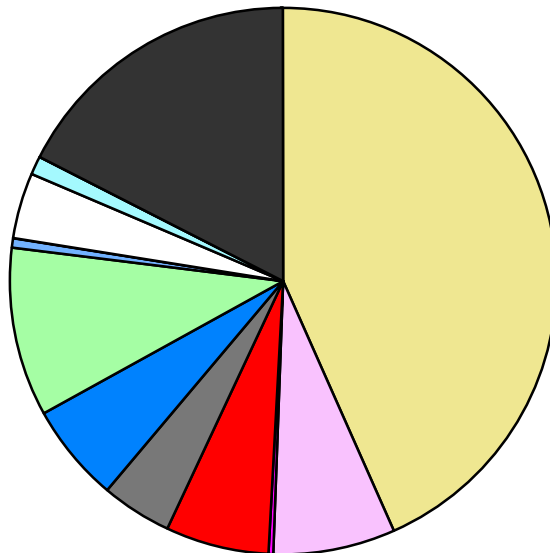


Land Use	Area (ac.)	Area (%)	Parcels	Parcels (%)
Agricultural				
Single Family Residential	9,252.3	43.4%	20,132	87.6%
Multiple Family	1,545.3	7.3%	157	0.7%
Mobile Home Park	38.2	0.2%	9	0.0%
Commercial/Office	1,293.1	6.1%	642	2.8%
Industrial	868.7	4.1%	379	1.6%
Public/Institutional	1,261.1	5.9%	168	0.7%
Recreation/Conservation	2,146.2	10.1%	350	1.5%
Transp./Utility/Comm.	82.0	0.4%	38	0.2%
Extractive				
Vacant	855.7	4.0%	1,104	4.8%
Water	244.5	1.1%		
Railroad Right-of-Way				
Road Right-of-Way	3,721.3	17.5%		
<b>Total</b>	<b>21,308.5</b>	<b>100.0%</b>	<b>22,979</b>	<b>100.0%</b>

Single Family By Lot Size	Area (ac.)	Area (%)	Parcels	Parcels (%)
10 acres or greater	52.8	0.6%	4	0.0%
5 to 9.9 acres	151.6	1.6%	24	0.1%
2.5 to 4.9 acres	378.8	4.1%	110	0.5%
1 to 2.4 acres	1,510.0	16.3%	1,044	5.2%
14,000 to 43,559 sq. ft.	4,529.7	49.0%	8,893	44.2%
8,000 to 13,999 sq. ft.	2,257.8	24.4%	8,621	42.8%
Less than 8,000 sq. ft.	202.6	2.2%	1,351	6.7%
More than one unit per parcel	169.0	1.8%	85	0.4%
<b>Single Family Sub-total</b>	<b>9,252.3</b>	<b>100.0%</b>	<b>20,132</b>	<b>100.0%</b>

**Land Use by Area**

- Agricultural
- Single Family Residential
- Multiple Family
- Mobile Home Park
- Commercial/Office
- Industrial
- Public/Institutional
- Recreation/Conservation
- Transp./Utility/Comm.
- Extractive
- Vacant
- Water
- Railroad Right-of-Way
- Road Right-of-Way



For more information, maps, or questions about this data, please contact the Oakland County One Stop Shop at (248) 858-0720.