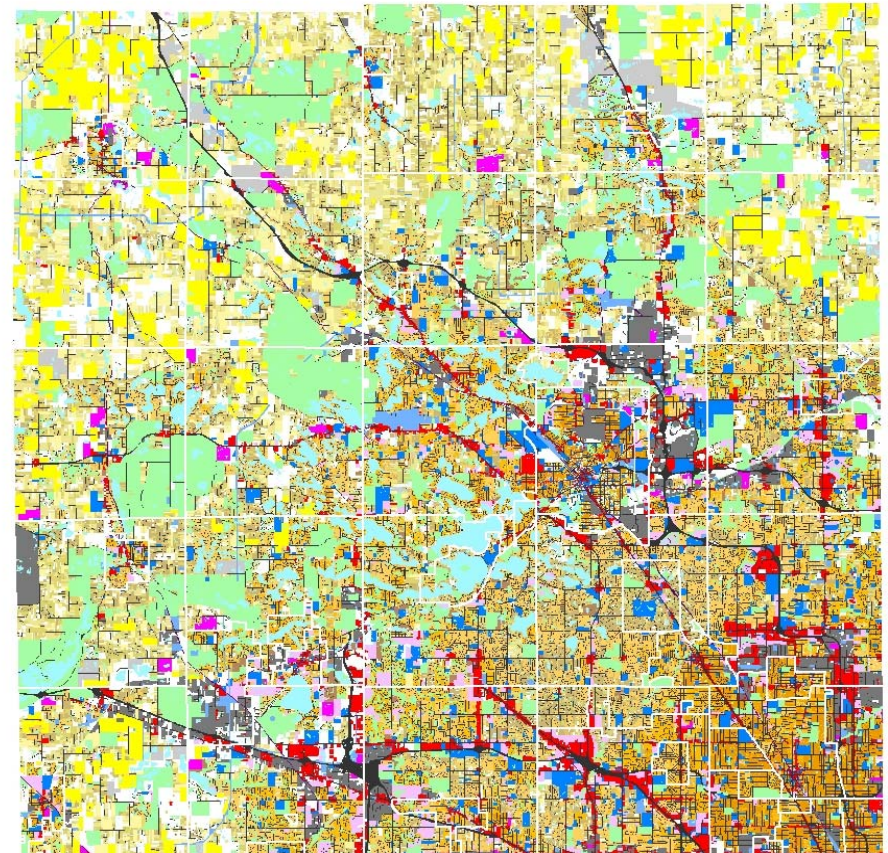
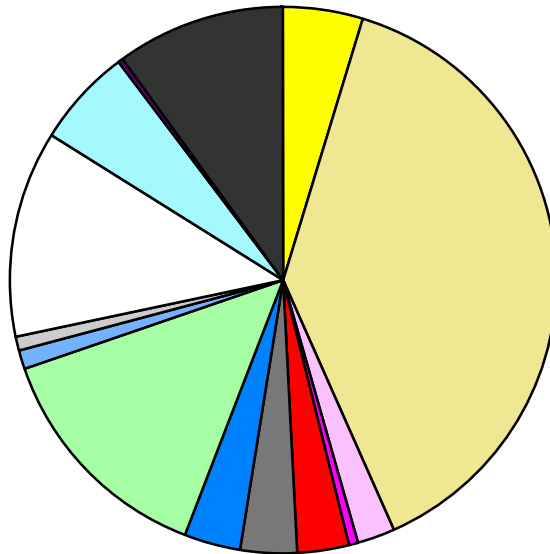


Land Use	Area (ac.)	Area (%)	Parcels	Parcels (%)
Agricultural	27,320.2	4.7%	652	0.2%
Single Family Residential	224,340.3	38.6%	352,301	83.5%
Multiple Family	13,254.4	2.3%	2,541	0.6%
Mobile Home Park	3,461.4	0.6%	246	0.1%
Commercial/Office	17,748.9	3.1%	12,596	3.0%
Industrial	17,967.3	3.1%	5,829	1.4%
Public/Institutional	20,167.9	3.5%	3,056	0.7%
Recreation/Conservation	80,167.9	13.8%	6,614	1.6%
Transp./Utility/Comm.	6,344.6	1.1%	1,297	0.3%
Extractive	6,036.9	1.0%	85	0.0%
Vacant	69,782.0	12.0%	36,683	8.7%
Water	35,034.3	6.0%		
Railroad Right-of-Way	1,107.1	0.2%		
Road Right-of-Way	57,810.0	10.0%		
<b>Total</b>	<b>580,543.2</b>	<b>100.0%</b>	<b>421,900</b>	<b>100.0%</b>

Single Family By Lot Size	Area (ac.)	Area (%)	Parcels	Parcels (%)
10 acres or greater	33,057.1	14.7%	1,804	0.5%
5 to 9.9 acres	30,162.2	13.4%	3,886	1.1%
2.5 to 4.9 acres	28,134.4	12.5%	7,852	2.2%
1 to 2.4 acres	35,521.2	15.8%	22,854	6.5%
14,000 to 43,559 sq. ft.	54,853.1	24.5%	108,792	30.9%
8,000 to 13,999 sq. ft.	26,383.4	11.8%	106,258	30.2%
Less than 8,000 sq. ft.	13,716.2	6.1%	100,344	28.5%
More than one unit per parcel	2,512.8	1.1%	511	0.1%
<b>Single Family Sub-total</b>	<b>224,340.3</b>	<b>100.0%</b>	<b>352,301</b>	<b>100.0%</b>

### Land Use by Area

- Agricultural
- Single Family Residential
- Multiple Family
- Mobile Home Park
- Commercial/Office
- Industrial
- Public/Institutional
- Recreation/Conservation
- Transp./Utility/Comm.
- Extractive
- Vacant
- Water
- Railroad Right-of-Way
- Road Right-of-Way



For more information, maps, or questions about this data, please contact the Oakland County One Stop Shop at (248) 858-0720.