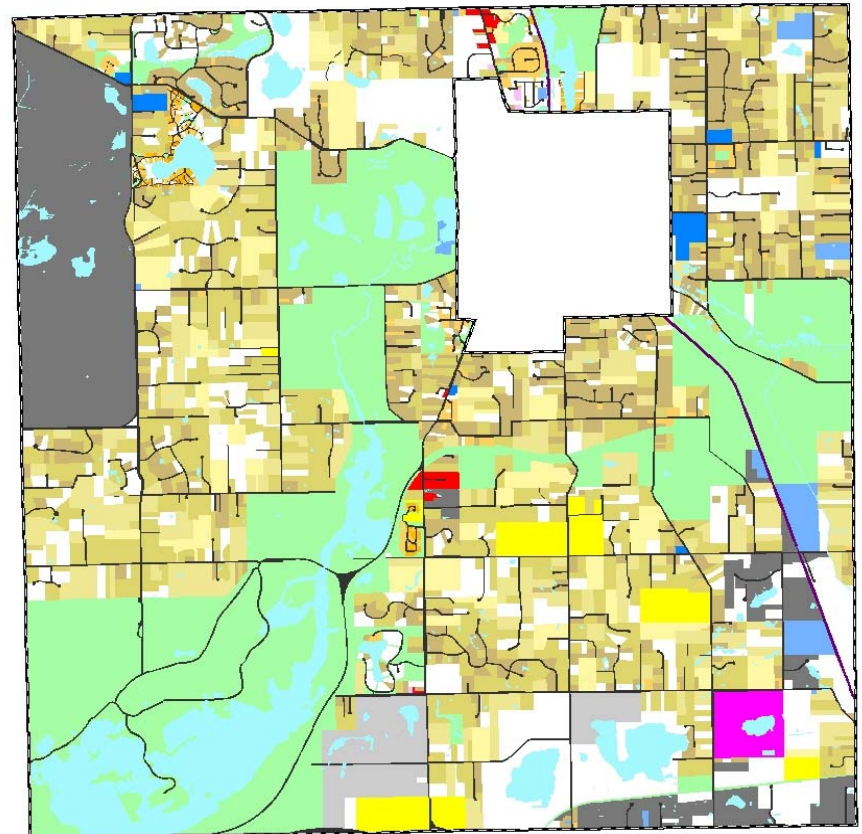
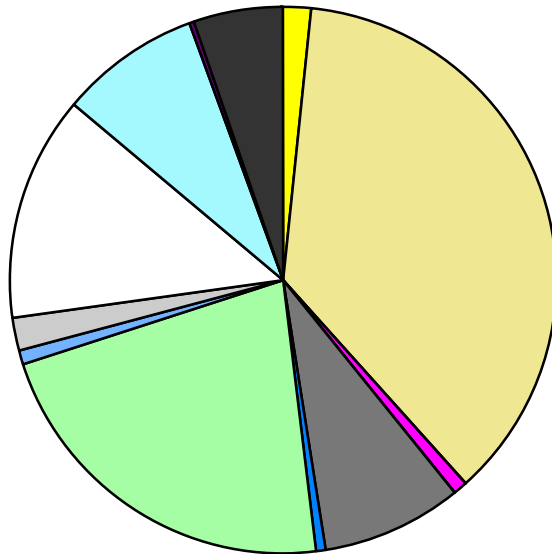


Land Use	Area (ac.)	Area (%)	Parcels	Parcels (%)
Agricultural	367.5	1.8%	9	0.2%
Single Family Residential	7,647.7	36.6%	2,859	74.5%
Multiple Family	6.3	0.0%	3	0.1%
Mobile Home Park	134.1	0.6%	2	0.1%
Commercial/Office	45.0	0.2%	14	0.4%
Industrial	1,749.8	8.4%	93	2.4%
Public/Institutional	84.5	0.4%	7	0.2%
Recreation/Conservation	4,591.3	22.0%	115	3.0%
Transp./Utility/Comm.	193.4	0.9%	15	0.4%
Extractive	388.6	1.9%	7	0.2%
Vacant	2,755.0	13.2%	716	18.6%
Water	1,758.0	8.4%		
Railroad Right-of-Way	47.6	0.2%		
Road Right-of-Way	1,122.6	5.4%		
Total	20,891.4	100.0%	3,840	100.0%

Single Family By Lot Size	Area (ac.)	Area (%)	Parcels	Parcels (%)
10 acres or greater	949.1	12.4%	65	2.3%
5 to 9.9 acres	1,580.6	20.7%	213	7.5%
2.5 to 4.9 acres	2,838.3	37.1%	845	29.6%
1 to 2.4 acres	2,040.0	26.7%	1,237	43.3%
14,000 to 43,559 sq. ft.	200.5	2.6%	311	10.9%
8,000 to 13,999 sq. ft.	31.0	0.4%	121	4.2%
Less than 8,000 sq. ft.	8.1	0.1%	67	2.3%
More than one unit per parcel				
Single Family Sub-total	7,647.7	100.0%	2,859	100.0%

Land Use by Area

- Agricultural
- Single Family Residential
- Multiple Family
- Mobile Home Park
- Commercial/Office
- Industrial
- Public/Institutional
- Recreation/Conservation
- Transp./Utility/Comm.
- Extractive
- Vacant
- Water
- Railroad Right-of-Way
- Road Right-of-Way



For more information, maps, or questions about this data, please contact the Oakland County One Stop Shop at (248) 858-0720.