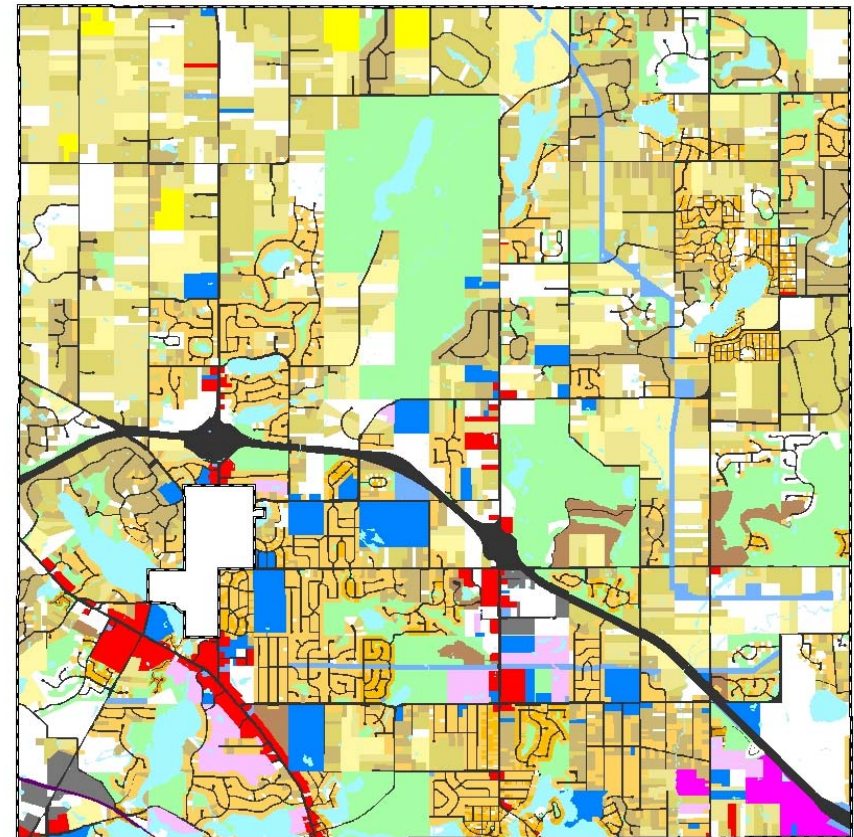
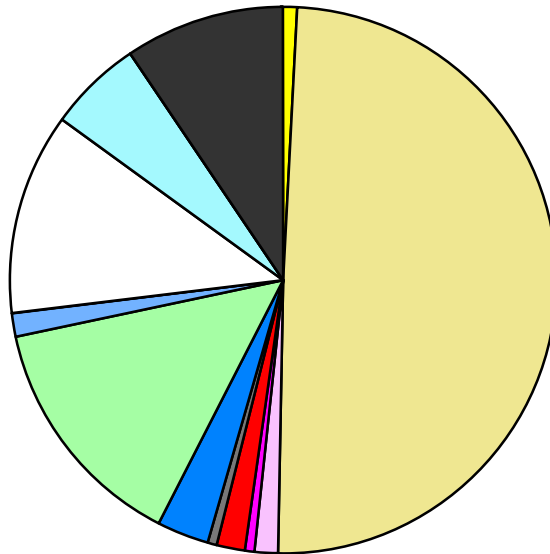


Land Use	Area (ac.)	Area (%)	Parcels	Parcels (%)
Agricultural	173.4	0.7%	11	0.1%
Single Family Residential	11,488.6	49.5%	9,907	81.9%
Multiple Family	323.4	1.4%	23	0.2%
Mobile Home Park	137.6	0.6%	3	0.0%
Commercial/Office	411.7	1.8%	221	1.8%
Industrial	132.2	0.6%	28	0.2%
Public/Institutional	708.9	3.1%	72	0.6%
Recreation/Conservation	3,261.0	14.0%	305	2.5%
Transp./Utility/Comm.	306.1	1.3%	53	0.4%
Extractive				
Vacant	2,806.6	12.1%	1,476	12.2%
Water	1,257.0	5.4%		
Railroad Right-of-Way	14.7	0.1%		
Road Right-of-Way	2,195.1	9.5%		
Total	23,216.3	100.0%	12,099	100.0%

Single Family By Lot Size	Area (ac.)	Area (%)	Parcels	Parcels (%)
10 acres or greater	1,428.2	12.4%	82	0.8%
5 to 9.9 acres	1,930.3	16.8%	253	2.6%
2.5 to 4.9 acres	2,596.5	22.6%	743	7.5%
1 to 2.4 acres	2,100.9	18.3%	1,377	13.9%
14,000 to 43,559 sq. ft.	2,782.6	24.2%	5,689	57.4%
8,000 to 13,999 sq. ft.	365.1	3.2%	1,415	14.3%
Less than 8,000 sq. ft.	42.1	0.4%	302	3.0%
More than one unit per parcel	242.9	2.1%	46	0.5%
Single Family Sub-total	11,488.6	100.0%	9,907	100.0%

Land Use by Area

- Agricultural
- Single Family Residential
- Multiple Family
- Mobile Home Park
- Commercial/Office
- Industrial
- Public/Institutional
- Recreation/Conservation
- Transp./Utility/Comm.
- Extractive
- Vacant
- Water
- Railroad Right-of-Way
- Road Right-of-Way



For more information, maps, or questions about this data, please contact the Oakland County One Stop Shop at (248) 858-0720.