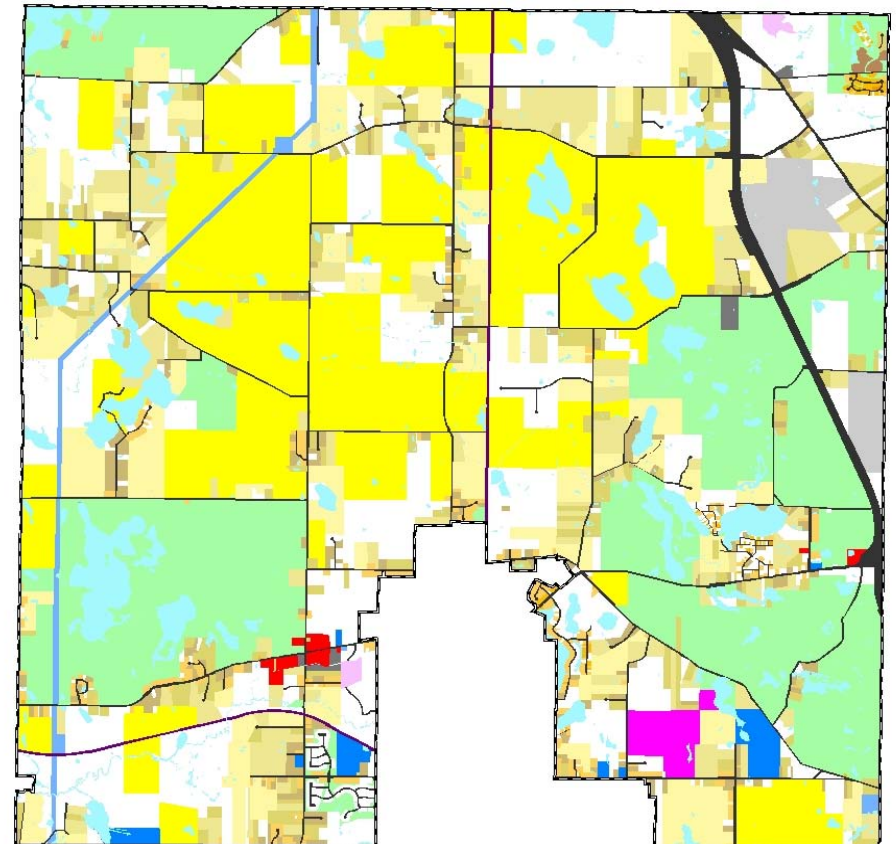
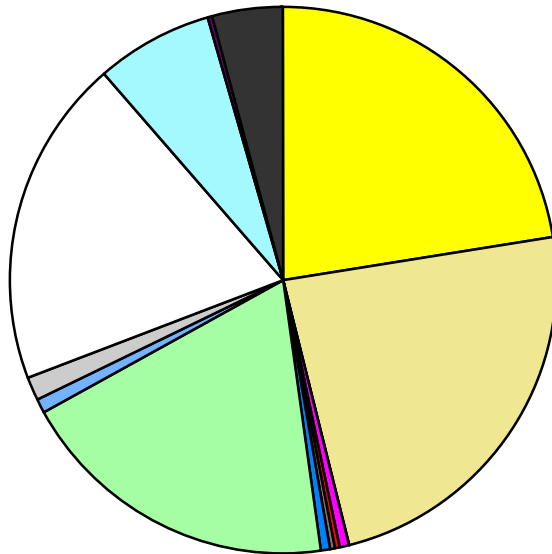


Land Use	Area (ac.)	Area (%)	Parcels	Parcels (%)
Agricultural	4,781.8	22.4%	88	3.5%
Single Family Residential	5,046.4	23.6%	1,460	58.8%
Multiple Family	32.8	0.2%	2	0.1%
Mobile Home Park	134.0	0.6%	8	0.3%
Commercial/Office	51.6	0.2%	20	0.8%
Industrial	39.0	0.2%	6	0.2%
Public/Institutional	145.8	0.7%	9	0.4%
Recreation/Conservation	4,054.6	19.0%	56	2.3%
Transp./Utility/Comm.	169.7	0.8%	16	0.6%
Extractive	330.3	1.5%	6	0.2%
Vacant	4,133.7	19.4%	811	32.7%
Water	1,464.7	6.9%		
Railroad Right-of-Way	78.0	0.4%		
Road Right-of-Way	892.6	4.2%		
<b>Total</b>	<b>21,354.8</b>	<b>100.0%</b>	<b>2,482</b>	<b>100.0%</b>

Single Family By Lot Size	Area (ac.)	Area (%)	Parcels	Parcels (%)
10 acres or greater	1,978.1	39.2%	98	6.7%
5 to 9.9 acres	1,444.0	28.6%	188	12.9%
2.5 to 4.9 acres	802.0	15.9%	213	14.6%
1 to 2.4 acres	458.8	9.1%	293	20.1%
14,000 to 43,559 sq. ft.	309.2	6.1%	506	34.7%
8,000 to 13,999 sq. ft.	34.7	0.7%	138	9.5%
Less than 8,000 sq. ft.	3.4	0.1%	22	1.5%
More than one unit per parcel	16.1	0.3%	2	0.1%
<b>Single Family Sub-total</b>	<b>5,046.4</b>	<b>100.0%</b>	<b>1,460</b>	<b>100.0%</b>

### Land Use by Area

- Agricultural
- Single Family Residential
- Multiple Family
- Mobile Home Park
- Commercial/Office
- Industrial
- Public/Institutional
- Recreation/Conservation
- Transp./Utility/Comm.
- Extractive
- Vacant
- Water
- Railroad Right-of-Way
- Road Right-of-Way



For more information, maps, or questions about this data, please contact the Oakland County One Stop Shop at (248) 858-0720.