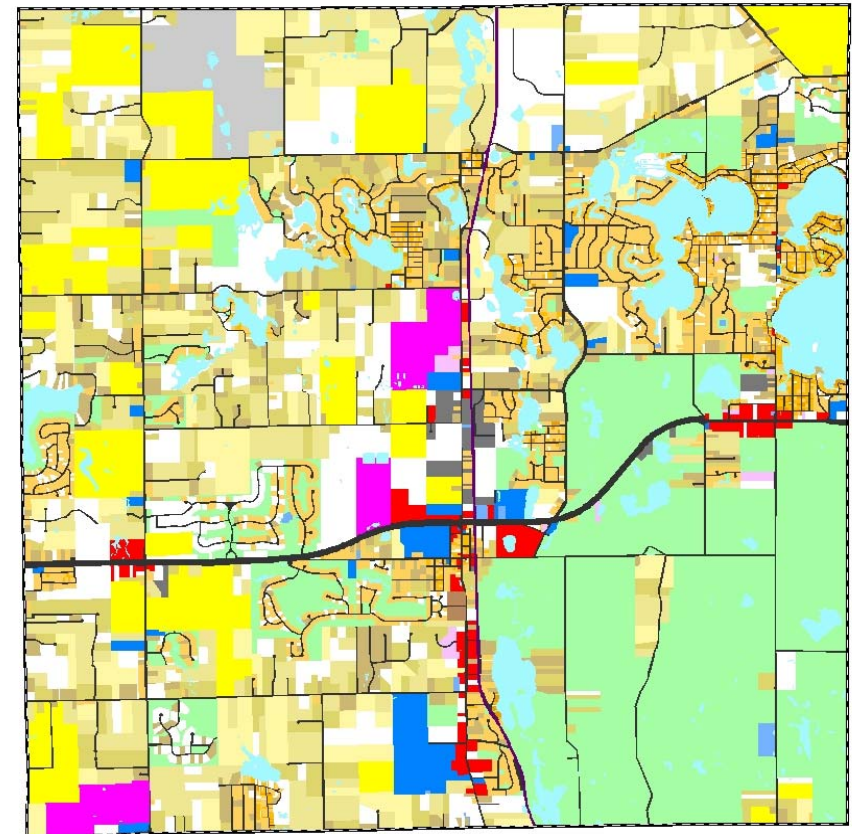
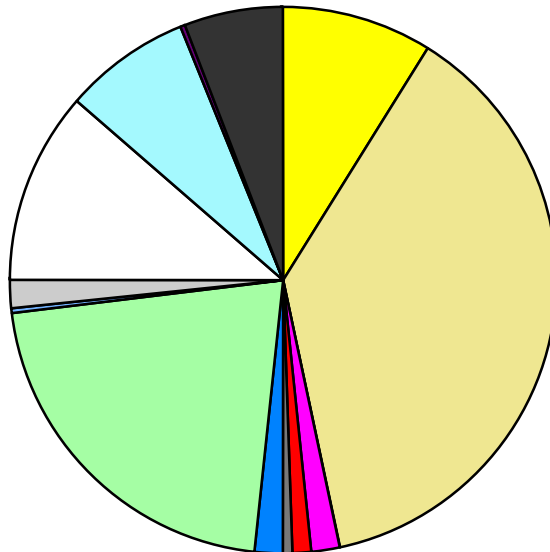


Land Use	Area (ac.)	Area (%)	Parcels	Parcels (%)
Agricultural	2,072.4	9.0%	52	0.7%
Single Family Residential	8,703.8	37.6%	6,222	81.7%
Multiple Family	52.4	0.2%	15	0.2%
Mobile Home Park	373.4	1.6%	6	0.1%
Commercial/Office	263.0	1.1%	135	1.8%
Industrial	140.6	0.6%	42	0.6%
Public/Institutional	387.8	1.7%	43	0.6%
Recreation/Conservation	4,908.0	21.2%	207	2.7%
Transp./Utility/Comm.	51.9	0.2%	19	0.2%
Extractive	393.9	1.7%	1	0.0%
Vacant	2,677.9	11.6%	877	11.5%
Water	1,682.3	7.3%		
Railroad Right-of-Way	72.6	0.3%		
Road Right-of-Way	1,371.6	5.9%		
<b>Total</b>	<b>23,151.6</b>	<b>100.0%</b>	<b>7,619</b>	<b>100.0%</b>

Single Family By Lot Size	Area (ac.)	Area (%)	Parcels	Parcels (%)
10 acres or greater	1,750.9	20.1%	111	1.8%
5 to 9.9 acres	2,181.4	25.1%	276	4.4%
2.5 to 4.9 acres	1,612.4	18.5%	432	6.9%
1 to 2.4 acres	1,055.4	12.1%	638	10.3%
14,000 to 43,559 sq. ft.	1,788.4	20.5%	3,382	54.4%
8,000 to 13,999 sq. ft.	226.6	2.6%	901	14.5%
Less than 8,000 sq. ft.	70.7	0.8%	481	7.7%
More than one unit per parcel	18.2	0.2%	1	0.0%
<b>Single Family Sub-total</b>	<b>8,703.8</b>	<b>100.0%</b>	<b>6,222</b>	<b>100.0%</b>

### Land Use by Area

- Agricultural
- Single Family Residential
- Multiple Family
- Mobile Home Park
- Commercial/Office
- Industrial
- Public/Institutional
- Recreation/Conservation
- Transp./Utility/Comm.
- Extractive
- Vacant
- Water
- Railroad Right-of-Way
- Road Right-of-Way



For more information, maps, or questions about this data, please contact the Oakland County One Stop Shop at (248) 858-0720.