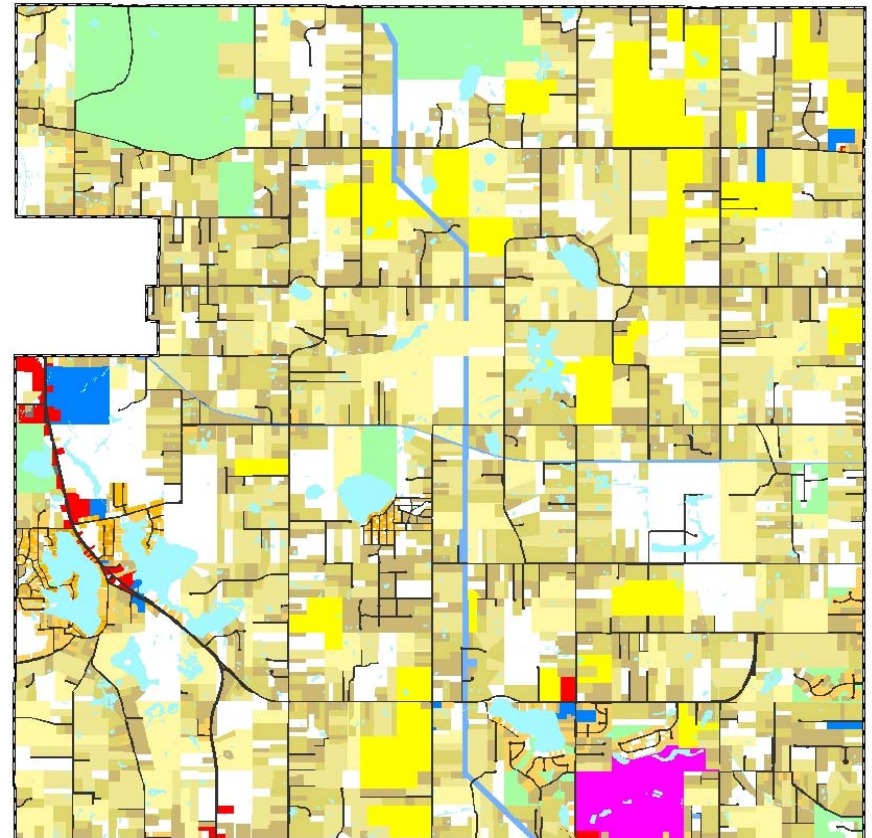
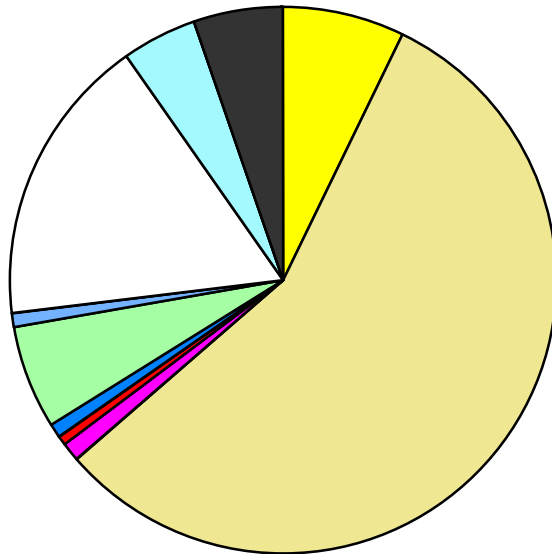


Land Use	Area (ac.)	Area (%)	Parcels	Parcels (%)
Agricultural	1,621.0	7.2%	50	0.9%
Single Family Residential	12,591.6	56.2%	4,126	77.5%
Multiple Family				
Mobile Home Park	272.0	1.2%	4	0.1%
Commercial/Office	107.5	0.5%	61	1.1%
Industrial	3.0	0.0%	2	0.0%
Public/Institutional	174.8	0.8%	18	0.3%
Recreation/Conservation	1,391.5	6.2%	189	3.6%
Transp./Utility/Comm.	194.4	0.9%	11	0.2%
Extractive				
Vacant	3,841.9	17.2%	862	16.2%
Water	1,039.4	4.6%		
Railroad Right-of-Way				
Road Right-of-Way	1,150.8	5.1%		
<b>Total</b>	<b>22,388.0</b>	<b>100.0%</b>	<b>5,323</b>	<b>100.0%</b>

Single Family By Lot Size	Area (ac.)	Area (%)	Parcels	Parcels (%)
10 acres or greater	2,485.5	19.7%	151	3.7%
5 to 9.9 acres	3,303.9	26.2%	432	10.5%
2.5 to 4.9 acres	3,433.5	27.3%	964	23.4%
1 to 2.4 acres	2,858.0	22.7%	1,395	33.8%
14,000 to 43,559 sq. ft.	409.7	3.3%	701	17.0%
8,000 to 13,999 sq. ft.	81.3	0.6%	339	8.2%
Less than 8,000 sq. ft.	19.8	0.2%	144	3.5%
More than one unit per parcel				
<b>Single Family Sub-total</b>	<b>12,591.6</b>	<b>100.0%</b>	<b>4,126</b>	<b>100.0%</b>

### Land Use by Area

- Agricultural
- Single Family Residential
- Multiple Family
- Mobile Home Park
- Commercial/Office
- Industrial
- Public/Institutional
- Recreation/Conservation
- Transp./Utility/Comm.
- Extractive
- Vacant
- Water
- Railroad Right-of-Way
- Road Right-of-Way



For more information, maps, or questions about this data, please contact the Oakland County One Stop Shop at (248) 858-0720.