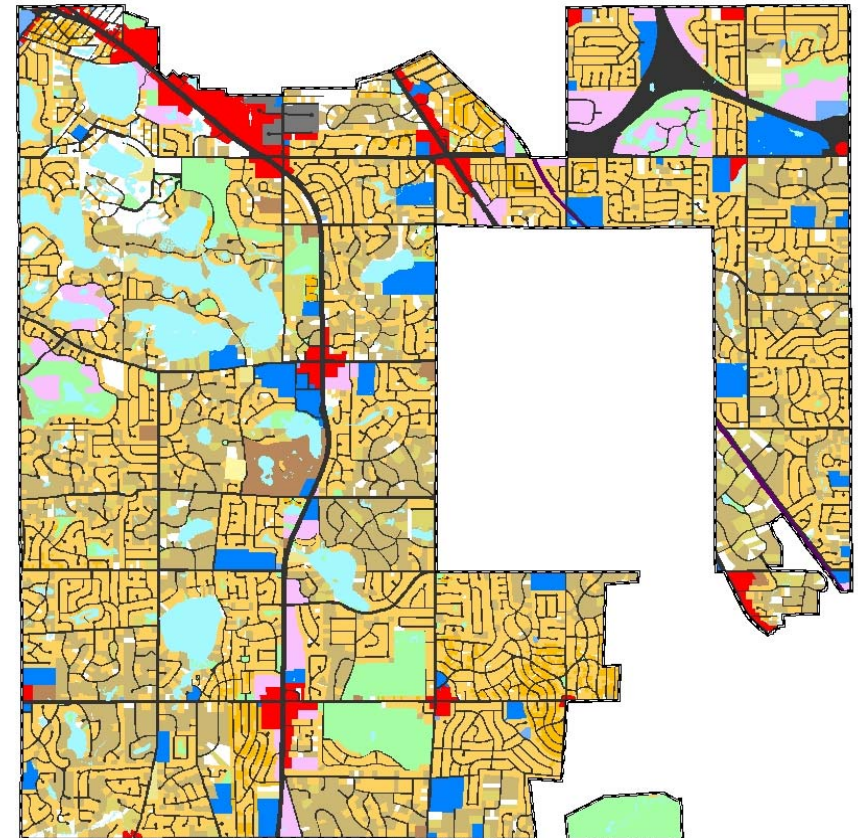
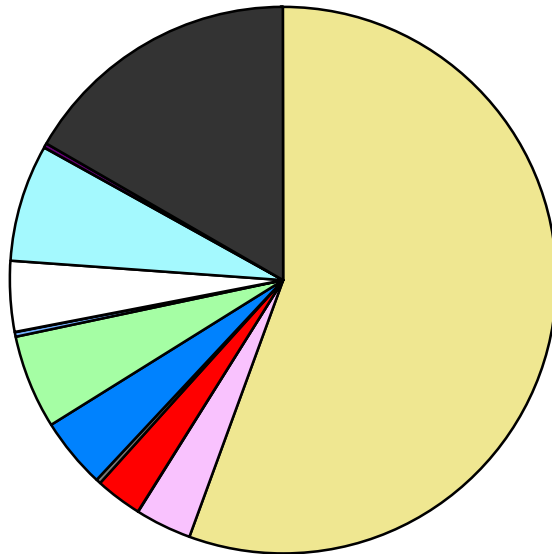


Land Use	Area (ac.)	Area (%)	Parcels	Parcels (%)
Agricultural				
Single Family Residential	9,255.0	55.7%	13,563	89.5%
Multiple Family	555.5	3.3%	53	0.3%
Mobile Home Park				
Commercial/Office	432.7	2.6%	269	1.8%
Industrial	55.6	0.3%	39	0.3%
Public/Institutional	677.3	4.1%	76	0.5%
Recreation/Conservation	948.3	5.7%	172	1.1%
Transp./Utility/Comm.	43.2	0.3%	27	0.2%
Extractive				
Vacant	680.7	4.1%	951	6.3%
Water	1,174.9	7.1%		
Railroad Right-of-Way	41.1	0.2%		
Road Right-of-Way	2,761.6	16.6%		
<b>Total</b>	<b>16,626.1</b>	<b>100.0%</b>	<b>15,150</b>	<b>100.0%</b>

Single Family By Lot Size	Area (ac.)	Area (%)	Parcels	Parcels (%)
10 acres or greater	26.5	0.3%	2	0.0%
5 to 9.9 acres	76.5	0.8%	11	0.1%
2.5 to 4.9 acres	374.4	4.0%	116	0.9%
1 to 2.4 acres	2,702.0	29.2%	1,943	14.3%
14,000 to 43,559 sq. ft.	5,567.0	60.2%	10,291	75.9%
8,000 to 13,999 sq. ft.	308.1	3.3%	1,114	8.2%
Less than 8,000 sq. ft.	9.8	0.1%	72	0.5%
More than one unit per parcel	190.9	2.1%	14	0.1%
<b>Single Family Sub-total</b>	<b>9,255.0</b>	<b>100.0%</b>	<b>13,563</b>	<b>100.0%</b>

### Land Use by Area

- Agricultural
- Single Family Residential
- Multiple Family
- Mobile Home Park
- Commercial/Office
- Industrial
- Public/Institutional
- Recreation/Conservation
- Transp./Utility/Comm.
- Extractive
- Vacant
- Water
- Railroad Right-of-Way
- Road Right-of-Way



For more information, maps, or questions about this data, please contact the Oakland County One Stop Shop at (248) 858-0720.