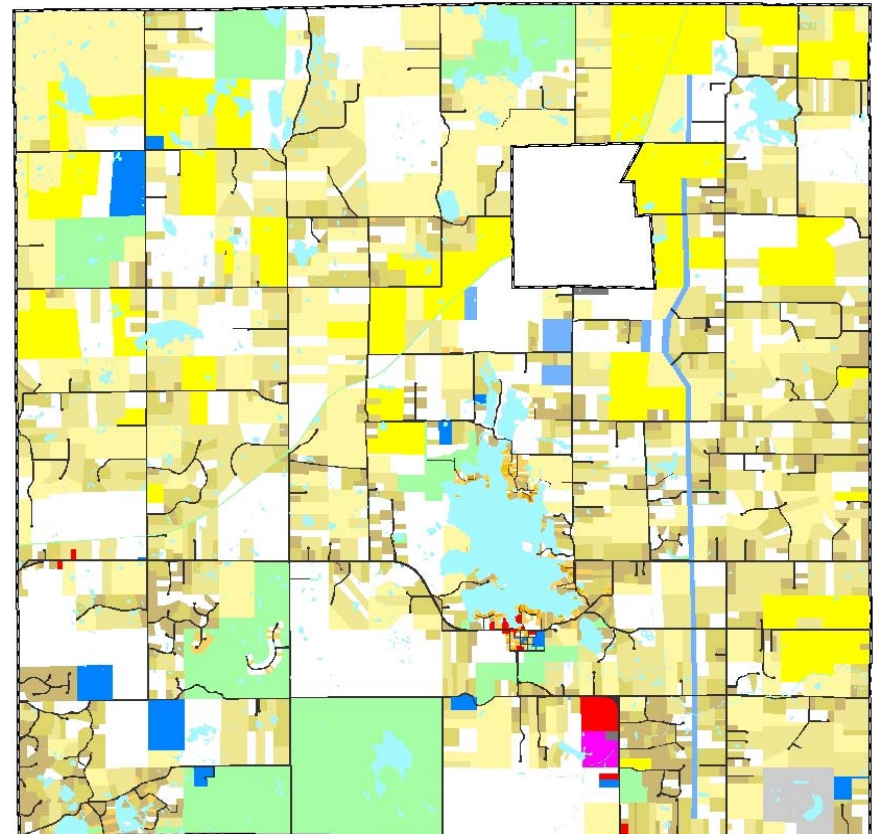
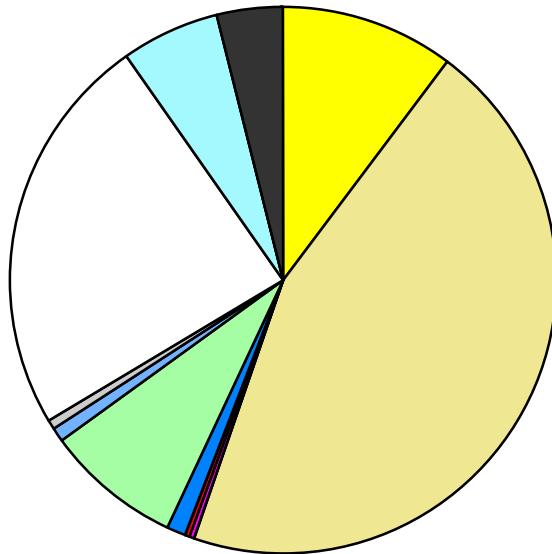


Land Use	Area (ac.)	Area (%)	Parcels	Parcels (%)
Agricultural	2,370.5	10.4%	59	2.1%
Single Family Residential	10,244.6	45.0%	2,030	71.0%
Multiple Family				
Mobile Home Park	36.7	0.2%	1	0.0%
Commercial/Office	60.2	0.3%	15	0.5%
Industrial	13.6	0.1%	2	0.1%
Public/Institutional	237.9	1.0%	19	0.7%
Recreation/Conservation	1,850.8	8.1%	57	2.0%
Transp./Utility/Comm.	200.9	0.9%	10	0.3%
Extractive	133.0	0.6%	3	0.1%
Vacant	5,447.1	23.9%	665	23.2%
Water	1,279.6	5.6%		
Railroad Right-of-Way				
Road Right-of-Way	915.7	4.0%		
Total	22,790.6	100.0%	2,861	100.0%

Single Family By Lot Size	Area (ac.)	Area (%)	Parcels	Parcels (%)
10 acres or greater	4,067.4	39.7%	216	10.6%
5 to 9.9 acres	3,138.7	30.6%	379	18.7%
2.5 to 4.9 acres	1,733.8	16.9%	482	23.7%
1 to 2.4 acres	1,161.8	11.3%	600	29.6%
14,000 to 43,559 sq. ft.	114.1	1.1%	195	9.6%
8,000 to 13,999 sq. ft.	17.3	0.2%	69	3.4%
Less than 8,000 sq. ft.	11.4	0.1%	89	4.4%
More than one unit per parcel				
Single Family Sub-total	10,244.6	100.0%	2,030	100.0%

Land Use by Area

- Agricultural
- Single Family Residential
- Multiple Family
- Mobile Home Park
- Commercial/Office
- Industrial
- Public/Institutional
- Recreation/Conservation
- Transp./Utility/Comm.
- Extractive
- Vacant
- Water
- Railroad Right-of-Way
- Road Right-of-Way



For more information, maps, or questions about this data, please contact the Oakland County One Stop Shop at (248) 858-0720.