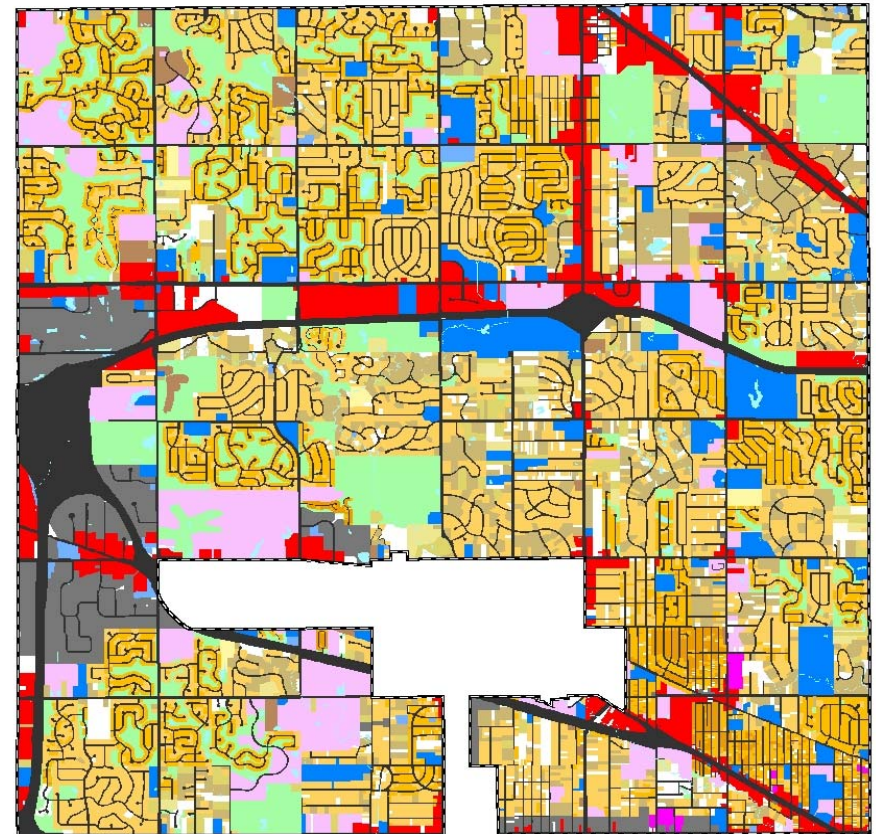
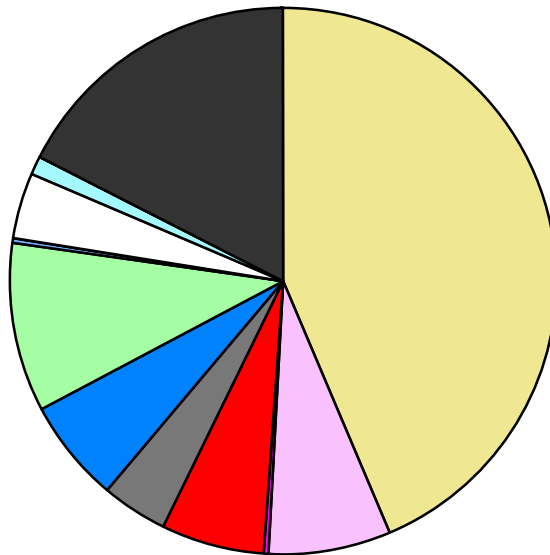


Land Use	Area (ac.)	Area (%)	Parcels	Parcels (%)
Agricultural				
Single Family Residential	9,290.5	43.6%	20,077	87.5%
Multiple Family	1,545.1	7.3%	156	0.7%
Mobile Home Park	38.2	0.2%	9	0.0%
Commercial/Office	1,292.2	6.1%	641	2.8%
Industrial	881.2	4.1%	379	1.7%
Public/Institutional	1,259.4	5.9%	166	0.7%
Recreation/Conservation	2,134.8	10.0%	349	1.5%
Transp./Utility/Comm.	82.4	0.4%	40	0.2%
Extractive				
Vacant	824.9	3.9%	1,116	4.9%
Water	244.0	1.1%		
Railroad Right-of-Way				
Road Right-of-Way	3,715.9	17.4%		
<b>Total</b>	<b>21,308.6</b>	<b>100.0%</b>	<b>22,933</b>	<b>100.0%</b>

Single Family By Lot Size	Area (ac.)	Area (%)	Parcels	Parcels (%)
10 acres or greater	62.9	0.7%	5	0.0%
5 to 9.9 acres	151.6	1.6%	24	0.1%
2.5 to 4.9 acres	409.6	4.4%	118	0.6%
1 to 2.4 acres	1,525.8	16.4%	1,052	5.2%
14,000 to 43,559 sq. ft.	4,522.9	48.7%	8,880	44.2%
8,000 to 13,999 sq. ft.	2,250.1	24.2%	8,587	42.8%
Less than 8,000 sq. ft.	198.9	2.1%	1,327	6.6%
More than one unit per parcel	168.7	1.8%	84	0.4%
<b>Single Family Sub-total</b>	<b>9,290.5</b>	<b>100.0%</b>	<b>20,077</b>	<b>100.0%</b>

### Land Use by Area

- Agricultural
- Single Family Residential
- Multiple Family
- Mobile Home Park
- Commercial/Office
- Industrial
- Public/Institutional
- Recreation/Conservation
- Transp./Utility/Comm.
- Extractive
- Vacant
- Water
- Railroad Right-of-Way
- Road Right-of-Way



For more information, maps, or questions about this data, please contact the Oakland County One Stop Shop at (248) 858-0720.