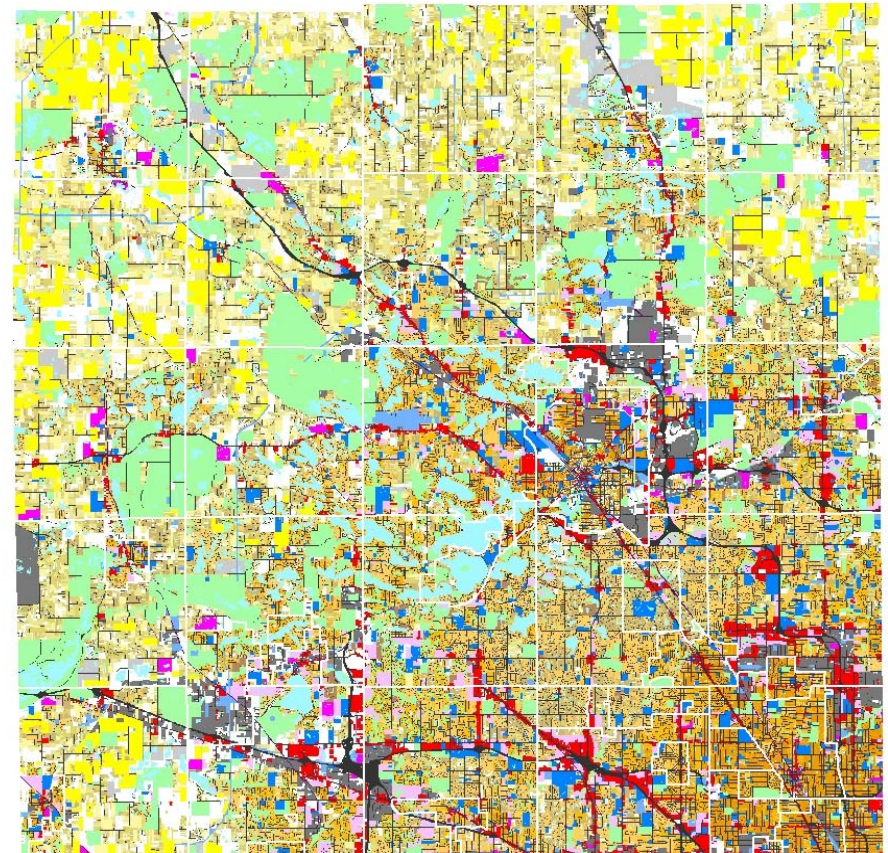
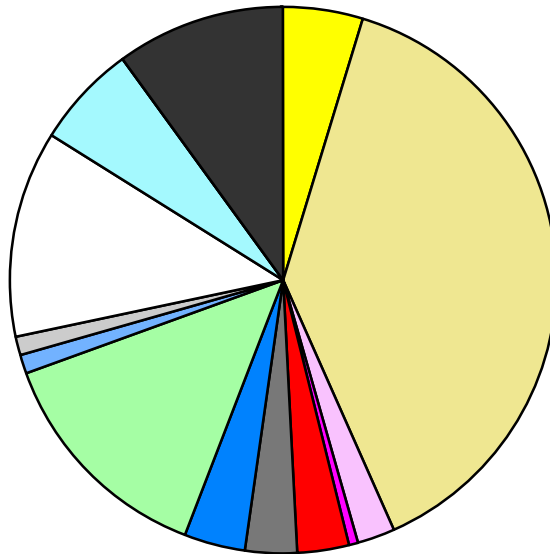


Land Use	Area (ac.)	Area (%)	Parcels	Parcels (%)
Agricultural	28,079.0	4.8%	681	0.2%
Single Family Residential	223,234.0	38.5%	349,704	83.2%
Multiple Family	13,046.2	2.2%	2,496	0.6%
Mobile Home Park	3,461.9	0.6%	245	0.1%
Commercial/Office	17,477.1	3.0%	12,572	3.0%
Industrial	17,966.7	3.1%	5,832	1.4%
Public/Institutional	20,154.5	3.5%	3,114	0.7%
Recreation/Conservation	79,448.2	13.7%	7,300	1.7%
Transp./Utility/Comm.	6,345.4	1.1%	1,314	0.3%
Extractive	6,049.0	1.0%	91	0.0%
Vacant	71,707.5	12.4%	37,124	8.8%
Water	35,031.1	6.0%		
Railroad Right-of-Way	1,105.8	0.2%		
Road Right-of-Way	57,433.0	9.9%		
Total	580,539.6	100.0%	420,473	100.0%

Single Family By Lot Size	Area (ac.)	Area (%)	Parcels	Parcels (%)
10 acres or greater	33,507.7	15.0%	1,836	0.5%
5 to 9.9 acres	30,101.0	13.5%	3,876	1.1%
2.5 to 4.9 acres	27,918.5	12.5%	7,782	2.2%
1 to 2.4 acres	35,061.3	15.7%	22,580	6.5%
14,000 to 43,559 sq. ft.	54,334.9	24.3%	107,782	30.8%
8,000 to 13,999 sq. ft.	26,158.6	11.7%	105,373	30.1%
Less than 8,000 sq. ft.	13,664.0	6.1%	99,996	28.6%
More than one unit per parcel	2,488.0	1.1%	479	0.1%
Single Family Sub-total	223,234.0	100.0%	349,704	100.0%

Land Use by Area

- Agricultural
- Single Family Residential
- Multiple Family
- Mobile Home Park
- Commercial/Office
- Industrial
- Public/Institutional
- Recreation/Conservation
- Transp./Utility/Comm.
- Extractive
- Vacant
- Water
- Railroad Right-of-Way
- Road Right-of-Way



For more information, maps, or questions about this data, please contact the Oakland County One Stop Shop at (248) 858-0720.