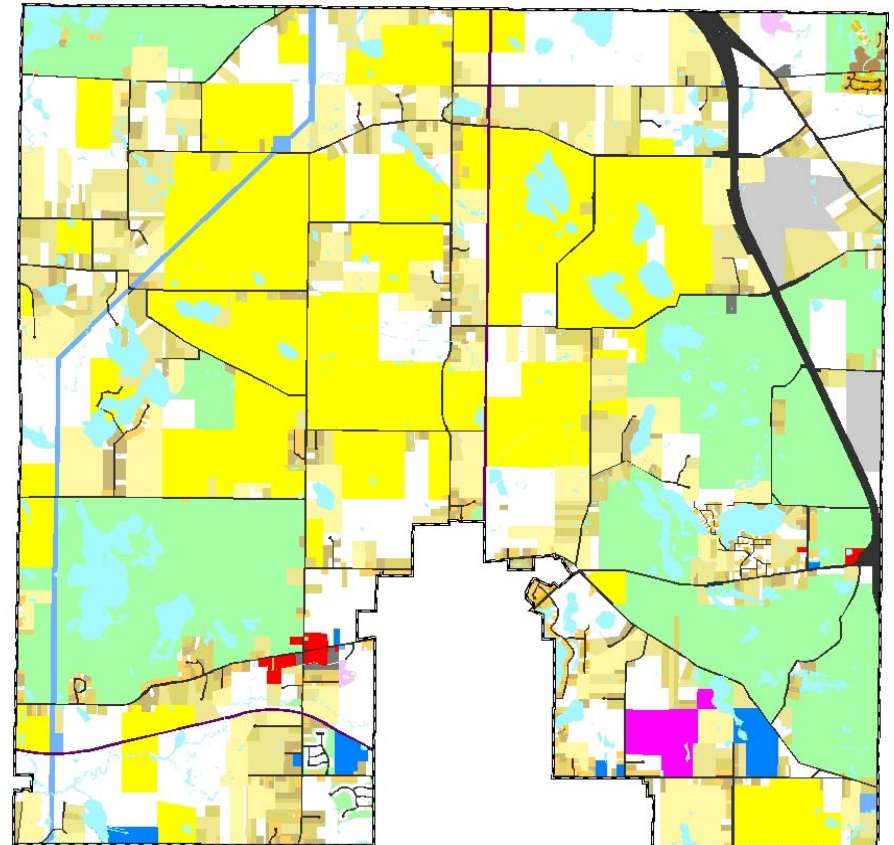
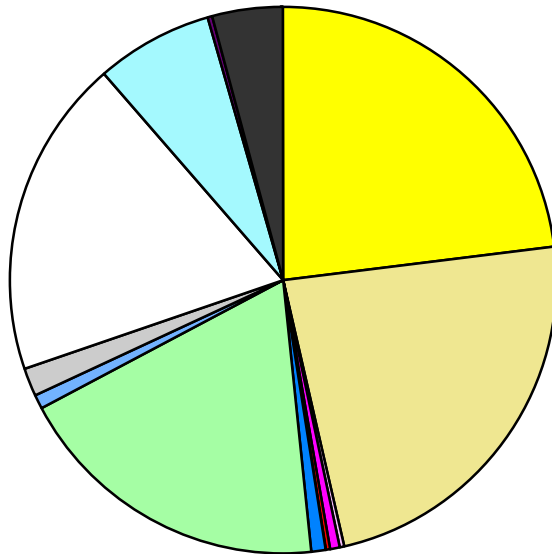


Land Use	Area (ac.)	Area (%)	Parcels	Parcels (%)
Agricultural	4,896.6	22.9%	102	4.2%
Single Family Residential	5,027.8	23.5%	1,465	60.7%
Multiple Family	25.1	0.1%	2	0.1%
Mobile Home Park	134.0	0.6%	8	0.3%
Commercial/Office	51.6	0.2%	21	0.9%
Industrial	25.7	0.1%	6	0.2%
Public/Institutional	146.1	0.7%	9	0.4%
Recreation/Conservation	4,057.2	19.0%	55	2.3%
Transp./Utility/Comm.	168.9	0.8%	16	0.7%
Extractive	330.3	1.5%	6	0.2%
Vacant	4,074.6	19.1%	722	29.9%
Water	1,464.7	6.9%		
Railroad Right-of-Way	77.7	0.4%		
Road Right-of-Way	874.3	4.1%		
Total	21,354.7	100.0%	2,412	100.0%

Single Family By Lot Size	Area (ac.)	Area (%)	Parcels	Parcels (%)
10 acres or greater	1,948.2	38.7%	97	6.6%
5 to 9.9 acres	1,461.2	29.1%	191	13.0%
2.5 to 4.9 acres	796.0	15.8%	212	14.5%
1 to 2.4 acres	457.5	9.1%	292	19.9%
14,000 to 43,559 sq. ft.	310.5	6.2%	508	34.7%
8,000 to 13,999 sq. ft.	34.7	0.7%	138	9.4%
Less than 8,000 sq. ft.	3.5	0.1%	25	1.7%
More than one unit per parcel	16.1	0.3%	2	0.1%
Single Family Sub-total	5,027.8	100.0%	1,465	100.0%

Land Use by Area

- Agricultural
- Single Family Residential
- Multiple Family
- Mobile Home Park
- Commercial/Office
- Industrial
- Public/Institutional
- Recreation/Conservation
- Transp./Utility/Comm.
- Extractive
- Vacant
- Water
- Railroad Right-of-Way
- Road Right-of-Way



For more information, maps, or questions about this data, please contact the Oakland County One Stop Shop at (248) 858-0720.