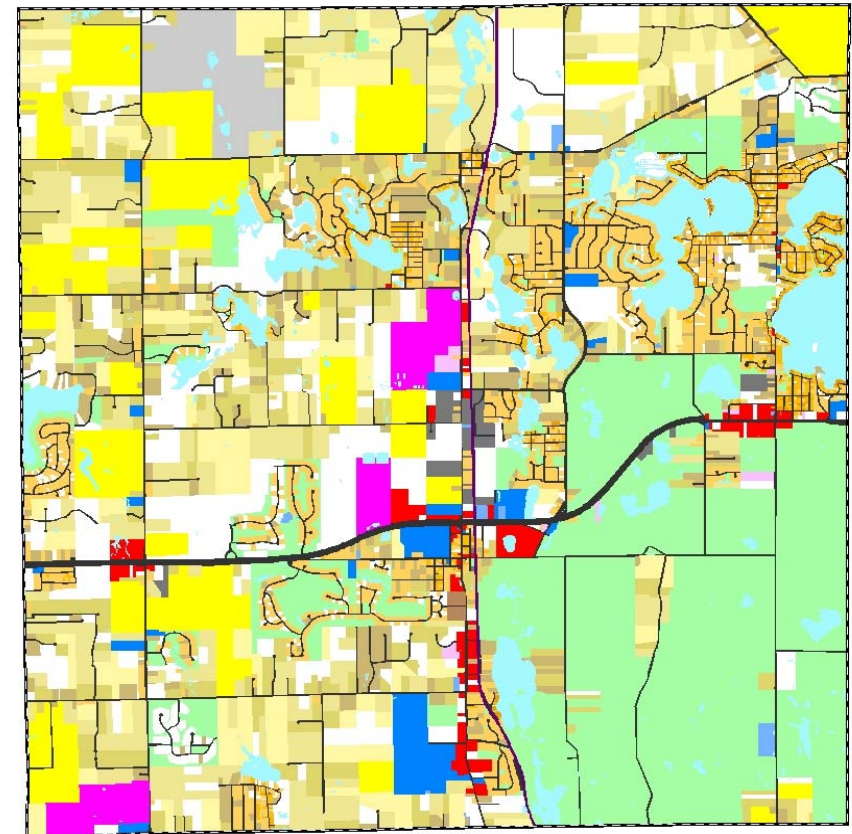
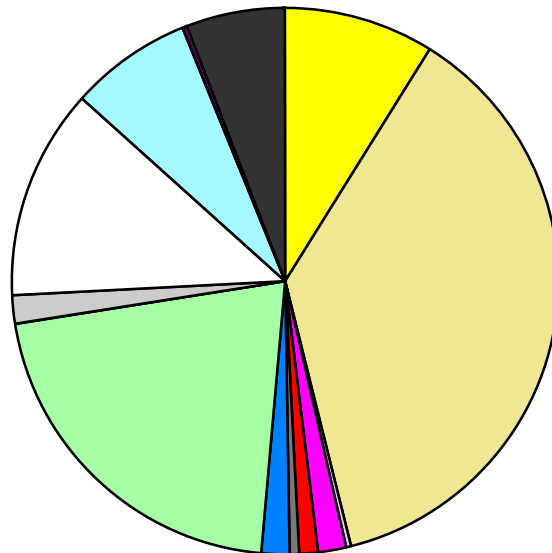


Land Use	Area (ac.)	Area (%)	Parcels	Parcels (%)
Agricultural	2,073.4	9.0%	51	0.7%
Single Family Residential	8,627.5	37.3%	6,117	81.6%
Multiple Family	45.0	0.2%	14	0.2%
Mobile Home Park	373.4	1.6%	6	0.1%
Commercial/Office	261.0	1.1%	136	1.8%
Industrial	139.3	0.6%	41	0.5%
Public/Institutional	387.8	1.7%	43	0.6%
Recreation/Conservation	4,846.8	20.9%	234	3.1%
Transp./Utility/Comm.	50.5	0.2%	18	0.2%
Extractive	393.9	1.7%	1	0.0%
Vacant	2,856.2	12.3%	839	11.2%
Water	1,679.2	7.3%		
Railroad Right-of-Way	72.6	0.3%		
Road Right-of-Way	1,345.5	5.8%		
Total	23,152.2	100.0%	7,500	100.0%

Single Family By Lot Size	Area (ac.)	Area (%)	Parcels	Parcels (%)
10 acres or greater	1,793.1	20.8%	114	1.9%
5 to 9.9 acres	2,193.6	25.4%	274	4.5%
2.5 to 4.9 acres	1,581.4	18.3%	424	6.9%
1 to 2.4 acres	1,007.9	11.7%	606	9.9%
14,000 to 43,559 sq. ft.	1,735.8	20.1%	3,307	54.1%
8,000 to 13,999 sq. ft.	226.1	2.6%	898	14.7%
Less than 8,000 sq. ft.	71.4	0.8%	492	8.0%
More than one unit per parcel	18.2	0.2%	2	0.0%
Single Family Sub-total	8,627.5	100.0%	6,117	100.0%

Land Use by Area

- Agricultural
- Single Family Residential
- Multiple Family
- Mobile Home Park
- Commercial/Office
- Industrial
- Public/Institutional
- Recreation/Conservation
- Transp./Utility/Comm.
- Extractive
- Vacant
- Water
- Railroad Right-of-Way
- Road Right-of-Way



For more information, maps, or questions about this data, please contact the Oakland County One Stop Shop at (248) 858-0720.