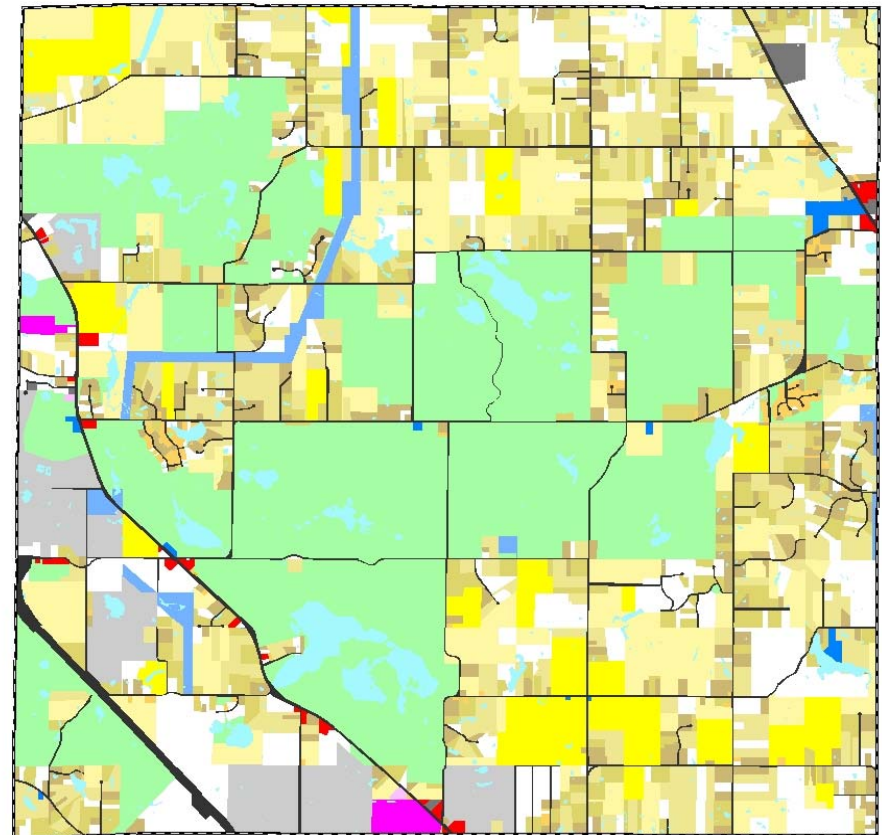
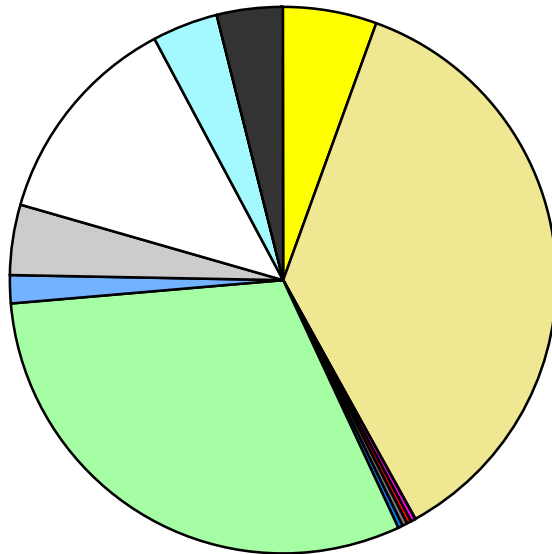


Land Use	Area (ac.)	Area (%)	Parcels	Parcels (%)
Agricultural	1,304.2	5.7%	35	1.5%
Single Family Residential	8,358.1	36.2%	1,726	73.5%
Multiple Family	7.4	0.0%	2	0.1%
Mobile Home Park	91.0	0.4%	3	0.1%
Commercial/Office	70.9	0.3%	30	1.3%
Industrial	55.1	0.2%	7	0.3%
Public/Institutional	62.0	0.3%	11	0.5%
Recreation/Conservation	7,047.2	30.6%	81	3.5%
Transp./Utility/Comm.	336.3	1.5%	17	0.7%
Extractive	966.6	4.2%	22	0.9%
Vacant	2,936.2	12.7%	413	17.6%
Water	905.4	3.9%		
Railroad Right-of-Way				
Road Right-of-Way	920.0	4.0%		
Total	23,060.4	100.0%	2,347	100.0%

Single Family By Lot Size	Area (ac.)	Area (%)	Parcels	Parcels (%)
10 acres or greater	3,035.7	36.3%	154	8.9%
5 to 9.9 acres	2,278.2	27.3%	282	16.3%
2.5 to 4.9 acres	1,642.2	19.6%	447	25.9%
1 to 2.4 acres	1,262.9	15.1%	655	37.9%
14,000 to 43,559 sq. ft.	137.8	1.6%	182	10.5%
8,000 to 13,999 sq. ft.	1.1	0.0%	4	0.2%
Less than 8,000 sq. ft.	0.1	0.0%	2	0.1%
More than one unit per parcel				
Single Family Sub-total	8,358.1	100.0%	1,726	100.0%

Land Use by Area

- Agricultural
- Single Family Residential
- Multiple Family
- Mobile Home Park
- Commercial/Office
- Industrial
- Public/Institutional
- Recreation/Conservation
- Transp./Utility/Comm.
- Extractive
- Vacant
- Water
- Railroad Right-of-Way
- Road Right-of-Way



For more information, maps, or questions about this data, please contact the Oakland County One Stop Shop at (248) 858-0720.