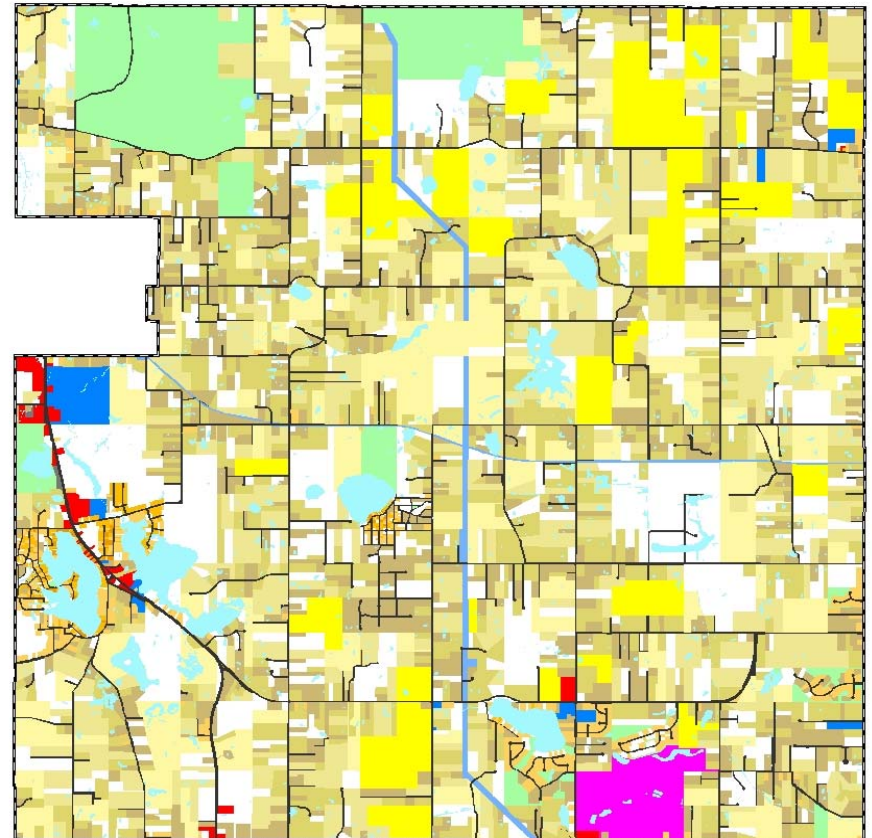
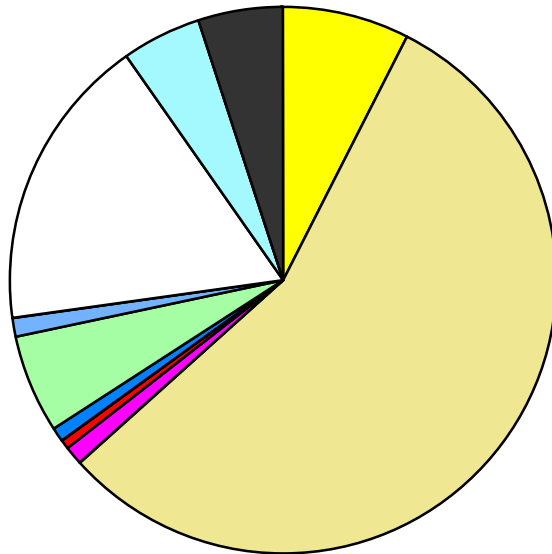


Land Use	Area (ac.)	Area (%)	Parcels	Parcels (%)
Agricultural	1,685.5	7.5%	52	1.0%
Single Family Residential	12,489.3	55.8%	3,999	76.4%
Multiple Family				
Mobile Home Park	272.0	1.2%	4	0.1%
Commercial/Office	105.4	0.5%	60	1.1%
Industrial	5.3	0.0%	6	0.1%
Public/Institutional	174.8	0.8%	18	0.3%
Recreation/Conservation	1,343.0	6.0%	187	3.6%
Transp./Utility/Comm.	194.2	0.9%	10	0.2%
Extractive				
Vacant	3,939.6	17.6%	895	17.1%
Water	1,039.4	4.6%		
Railroad Right-of-Way				
Road Right-of-Way	1,139.5	5.1%		
Total	22,388.0	100.0%	5,231	100.0%

Single Family By Lot Size	Area (ac.)	Area (%)	Parcels	Parcels (%)
10 acres or greater	2,642.1	21.2%	152	3.8%
5 to 9.9 acres	3,313.9	26.5%	431	10.8%
2.5 to 4.9 acres	3,353.4	26.9%	939	23.5%
1 to 2.4 acres	2,680.3	21.5%	1,311	32.8%
14,000 to 43,559 sq. ft.	398.6	3.2%	682	17.1%
8,000 to 13,999 sq. ft.	81.5	0.7%	340	8.5%
Less than 8,000 sq. ft.	19.6	0.2%	144	3.6%
More than one unit per parcel				
Single Family Sub-total	12,489.3	100.0%	3,999	100.0%

Land Use by Area

- Agricultural
- Single Family Residential
- Multiple Family
- Mobile Home Park
- Commercial/Office
- Industrial
- Public/Institutional
- Recreation/Conservation
- Transp./Utility/Comm.
- Extractive
- Vacant
- Water
- Railroad Right-of-Way
- Road Right-of-Way



For more information, maps, or questions about this data, please contact the Oakland County One Stop Shop at (248) 858-0720.