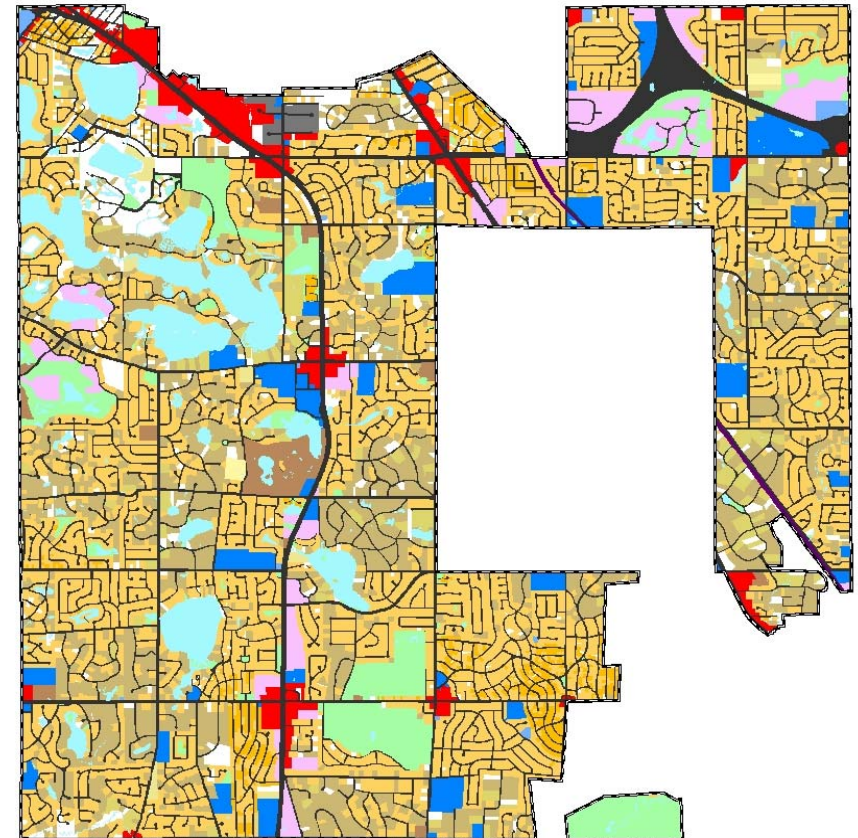
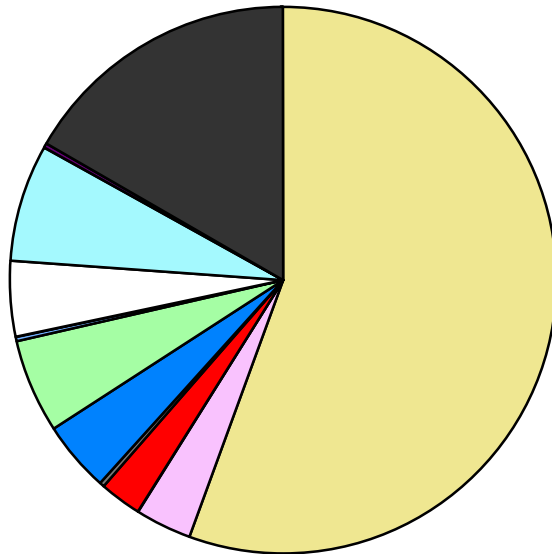


Land Use	Area (ac.)	Area (%)	Parcels	Parcels (%)
Agricultural				
Single Family Residential	9,217.5	55.4%	13,519	89.0%
Multiple Family	554.2	3.3%	52	0.3%
Mobile Home Park				
Commercial/Office	427.0	2.6%	268	1.8%
Industrial	55.6	0.3%	39	0.3%
Public/Institutional	678.6	4.1%	76	0.5%
Recreation/Conservation	948.9	5.7%	205	1.4%
Transp./Utility/Comm.	43.2	0.3%	27	0.2%
Extractive				
Vacant	723.4	4.4%	996	6.6%
Water	1,175.0	7.1%		
Railroad Right-of-Way	41.1	0.2%		
Road Right-of-Way	2,761.4	16.6%		
<b>Total</b>	<b>16,625.9</b>	<b>100.0%</b>	<b>15,182</b>	<b>100.0%</b>

Single Family By Lot Size	Area (ac.)	Area (%)	Parcels	Parcels (%)
10 acres or greater	26.5	0.3%	2	0.0%
5 to 9.9 acres	76.5	0.8%	11	0.1%
2.5 to 4.9 acres	370.2	4.0%	115	0.9%
1 to 2.4 acres	2,690.6	29.2%	1,934	14.3%
14,000 to 43,559 sq. ft.	5,545.6	60.2%	10,258	75.9%
8,000 to 13,999 sq. ft.	307.5	3.3%	1,112	8.2%
Less than 8,000 sq. ft.	9.7	0.1%	73	0.5%
More than one unit per parcel	190.9	2.1%	14	0.1%
<b>Single Family Sub-total</b>	<b>9,217.5</b>	<b>100.0%</b>	<b>13,519</b>	<b>100.0%</b>

#### Land Use by Area

- Agricultural
- Single Family Residential
- Multiple Family
- Mobile Home Park
- Commercial/Office
- Industrial
- Public/Institutional
- Recreation/Conservation
- Transp./Utility/Comm.
- Extractive
- Vacant
- Water
- Railroad Right-of-Way
- Road Right-of-Way



For more information, maps, or questions about this data, please contact the Oakland County One Stop Shop at (248) 858-0720.