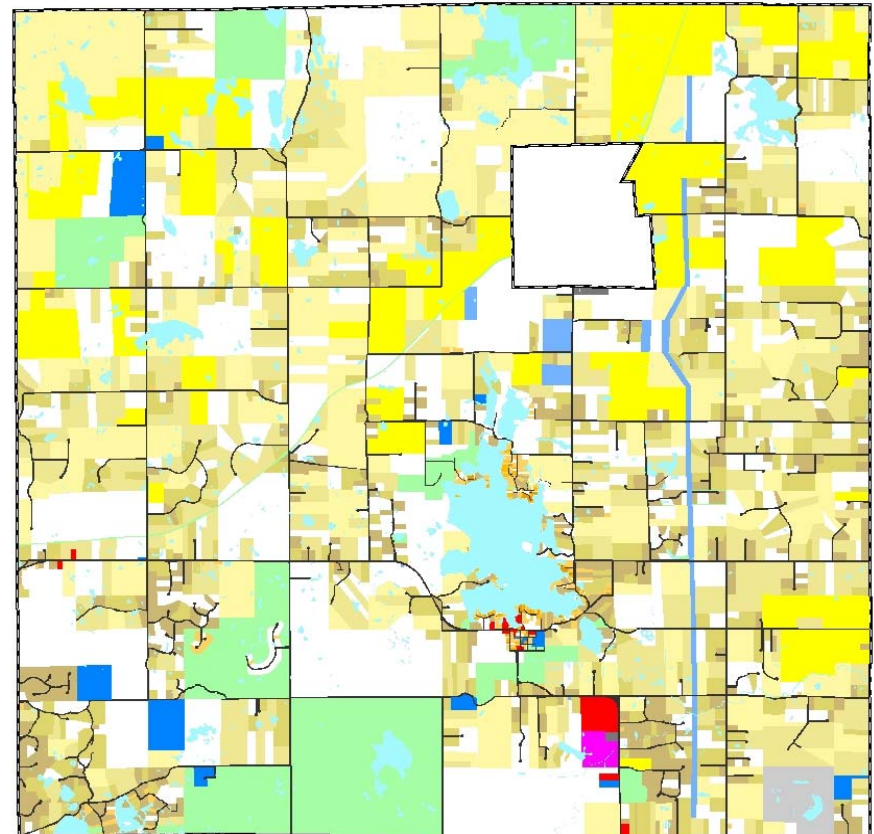
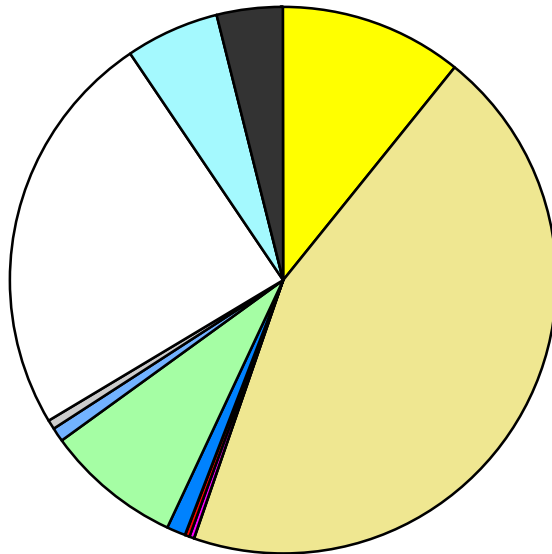


Land Use	Area (ac.)	Area (%)	Parcels	Parcels (%)
Agricultural	2,441.1	10.7%	63	2.2%
Single Family Residential	10,157.2	44.6%	2,007	68.7%
Multiple Family				
Mobile Home Park	36.7	0.2%	1	0.0%
Commercial/Office	60.8	0.3%	15	0.5%
Industrial	13.6	0.1%	2	0.1%
Public/Institutional	237.4	1.0%	19	0.7%
Recreation/Conservation	1,843.5	8.1%	58	2.0%
Transp./Utility/Comm.	201.5	0.9%	12	0.4%
Extractive	134.6	0.6%	3	0.1%
Vacant	5,514.1	24.2%	740	25.3%
Water	1,279.8	5.6%		
Railroad Right-of-Way				
Road Right-of-Way	870.8	3.8%		
Total	22,791.0	100.0%	2,920	100.0%

Single Family By Lot Size	Area (ac.)	Area (%)	Parcels	Parcels (%)
10 acres or greater	4,186.4	41.2%	227	11.3%
5 to 9.9 acres	3,005.2	29.6%	367	18.3%
2.5 to 4.9 acres	1,684.4	16.6%	471	23.5%
1 to 2.4 acres	1,142.6	11.2%	593	29.5%
14,000 to 43,559 sq. ft.	110.1	1.1%	189	9.4%
8,000 to 13,999 sq. ft.	16.9	0.2%	67	3.3%
Less than 8,000 sq. ft.	11.6	0.1%	93	4.6%
More than one unit per parcel				
Single Family Sub-total	10,157.2	100.0%	2,007	100.0%

Land Use by Area

- Agricultural
- Single Family Residential
- Multiple Family
- Mobile Home Park
- Commercial/Office
- Industrial
- Public/Institutional
- Recreation/Conservation
- Transp./Utility/Comm.
- Extractive
- Vacant
- Water
- Railroad Right-of-Way
- Road Right-of-Way



For more information, maps, or questions about this data, please contact the Oakland County One Stop Shop at (248) 858-0720.