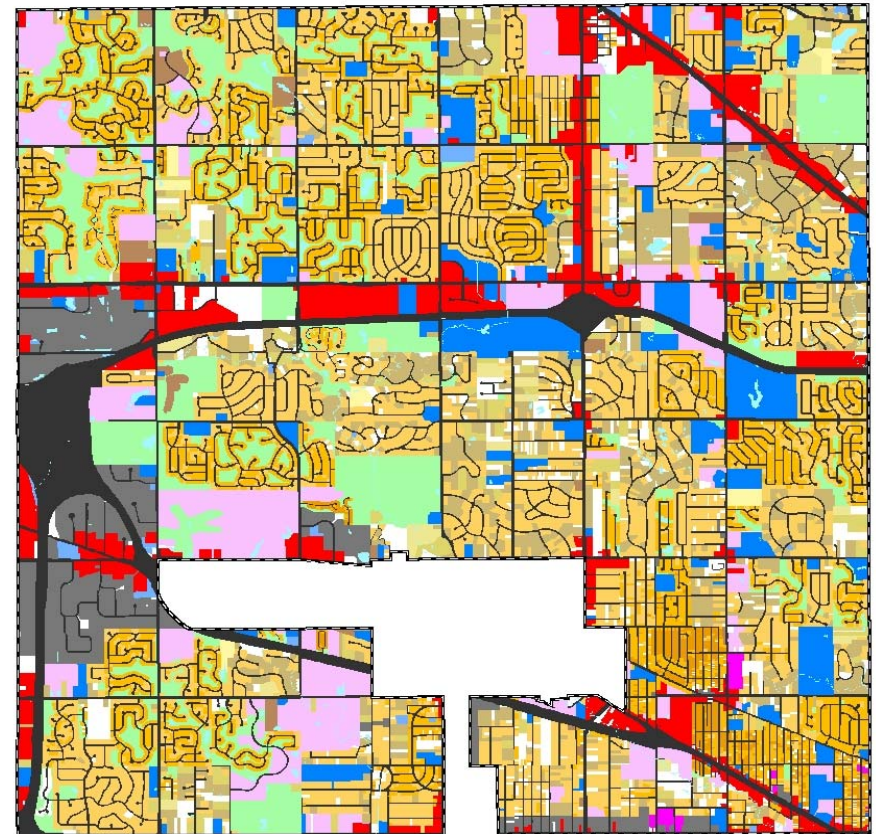
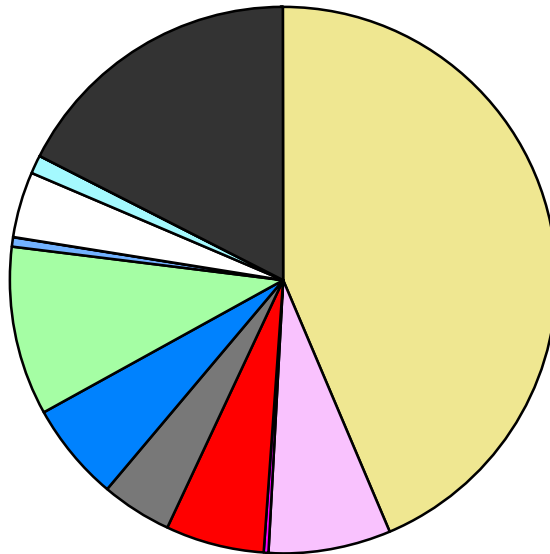


Land Use	Area (ac.)	Area (%)	Parcels	Parcels (%)
Agricultural				
Single Family Residential	9,298.6	43.6%	19,987	87.4%
Multiple Family	1,540.6	7.2%	158	0.7%
Mobile Home Park	38.2	0.2%	9	0.0%
Commercial/Office	1,280.5	6.0%	633	2.8%
Industrial	884.0	4.1%	381	1.7%
Public/Institutional	1,250.5	5.9%	164	0.7%
Recreation/Conservation	2,127.9	10.0%	365	1.6%
Transp./Utility/Comm.	79.6	0.4%	39	0.2%
Extractive				
Vacant	858.9	4.0%	1,138	5.0%
Water	244.5	1.1%		
Railroad Right-of-Way				
Road Right-of-Way	3,705.3	17.4%		
Total	21,308.6	100.0%	22,874	100.0%

Single Family By Lot Size	Area (ac.)	Area (%)	Parcels	Parcels (%)
10 acres or greater	73.9	0.8%	6	0.0%
5 to 9.9 acres	154.0	1.7%	24	0.1%
2.5 to 4.9 acres	437.4	4.7%	124	0.6%
1 to 2.4 acres	1,533.3	16.5%	1,055	5.3%
14,000 to 43,559 sq. ft.	4,492.1	48.3%	8,826	44.2%
8,000 to 13,999 sq. ft.	2,242.5	24.1%	8,555	42.8%
Less than 8,000 sq. ft.	196.6	2.1%	1,312	6.6%
More than one unit per parcel	168.7	1.8%	85	0.4%
Single Family Sub-total	9,298.6	100.0%	19,987	100.0%

Land Use by Area

- Agricultural
- Single Family Residential
- Multiple Family
- Mobile Home Park
- Commercial/Office
- Industrial
- Public/Institutional
- Recreation/Conservation
- Transp./Utility/Comm.
- Extractive
- Vacant
- Water
- Railroad Right-of-Way
- Road Right-of-Way



For more information, maps, or questions about this data, please contact the Oakland County One Stop Shop at (248) 858-0720.