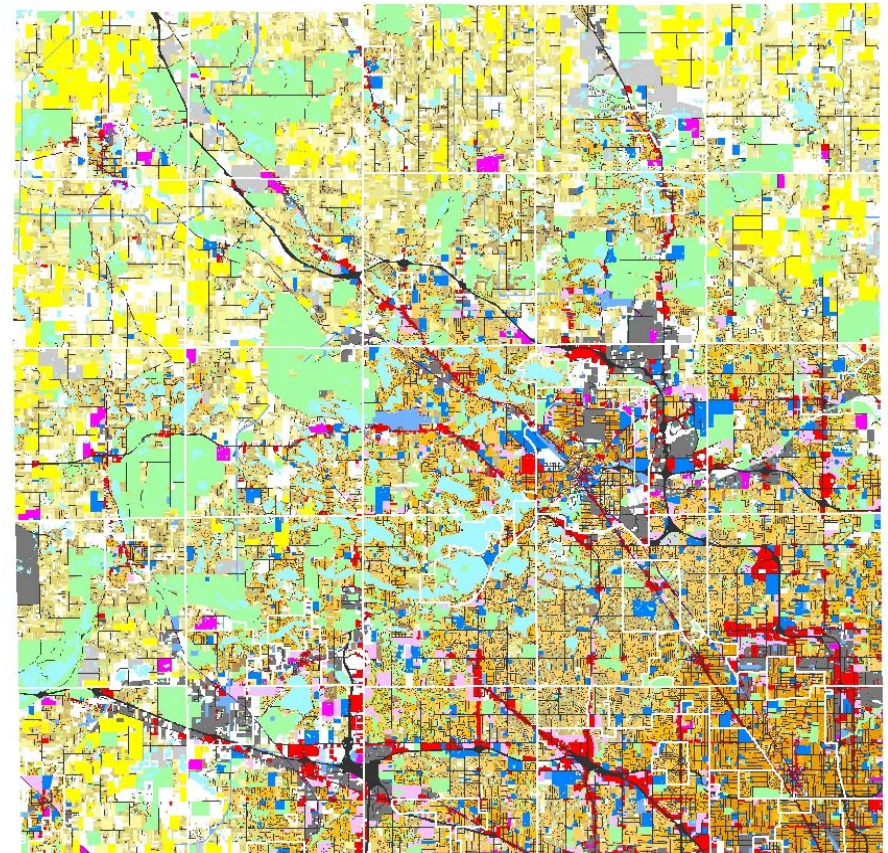
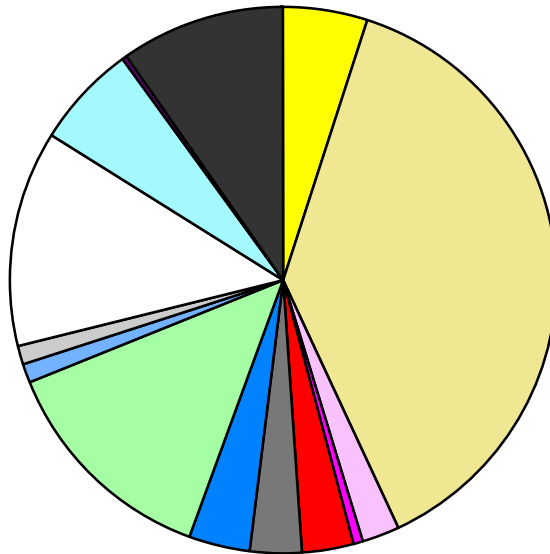


Land Use	Area (ac.)	Area (%)	Parcels	Parcels (%)
Agricultural	28,943.9	5.0%	678	0.2%
Single Family Residential	221,474.7	38.1%	346,512	83.1%
Multiple Family	12,657.6	2.2%	2,435	0.6%
Mobile Home Park	3,464.8	0.6%	245	0.1%
Commercial/Office	17,345.9	3.0%	12,512	3.0%
Industrial	17,964.3	3.1%	5,802	1.4%
Public/Institutional	20,057.8	3.5%	3,072	0.7%
Recreation/Conservation	78,666.7	13.6%	6,913	1.7%
Transp./Utility/Comm.	6,387.3	1.1%	1,208	0.3%
Extractive	6,305.5	1.1%	89	0.0%
Vacant	74,249.9	12.8%	37,430	9.0%
Water	35,007.3	6.0%		
Railroad Right-of-Way	1,095.2	0.2%		
Road Right-of-Way	56,918.3	9.8%		
Total	580,539.2	100.0%	416,896	100.0%

Single Family By Lot Size	Area (ac.)	Area (%)	Parcels	Parcels (%)
10 acres or greater	33,576.5	15.2%	1,852	0.5%
5 to 9.9 acres	29,869.7	13.5%	3,844	1.1%
2.5 to 4.9 acres	27,760.0	12.5%	7,732	2.2%
1 to 2.4 acres	34,684.5	15.7%	22,340	6.4%
14,000 to 43,559 sq. ft.	53,691.9	24.2%	106,484	30.7%
8,000 to 13,999 sq. ft.	25,839.3	11.7%	104,104	30.0%
Less than 8,000 sq. ft.	13,624.5	6.2%	99,722	28.8%
More than one unit per parcel	2,428.3	1.1%	434	0.1%
Single Family Sub-total	221,474.7	100.0%	346,512	100.0%

Land Use by Area

- Agricultural
- Single Family Residential
- Multiple Family
- Mobile Home Park
- Commercial/Office
- Industrial
- Public/Institutional
- Recreation/Conservation
- Transp./Utility/Comm.
- Extractive
- Vacant
- Water
- Railroad Right-of-Way
- Road Right-of-Way



For more information, maps, or questions about this data, please contact the Oakland County One Stop Shop at (248) 858-0720.