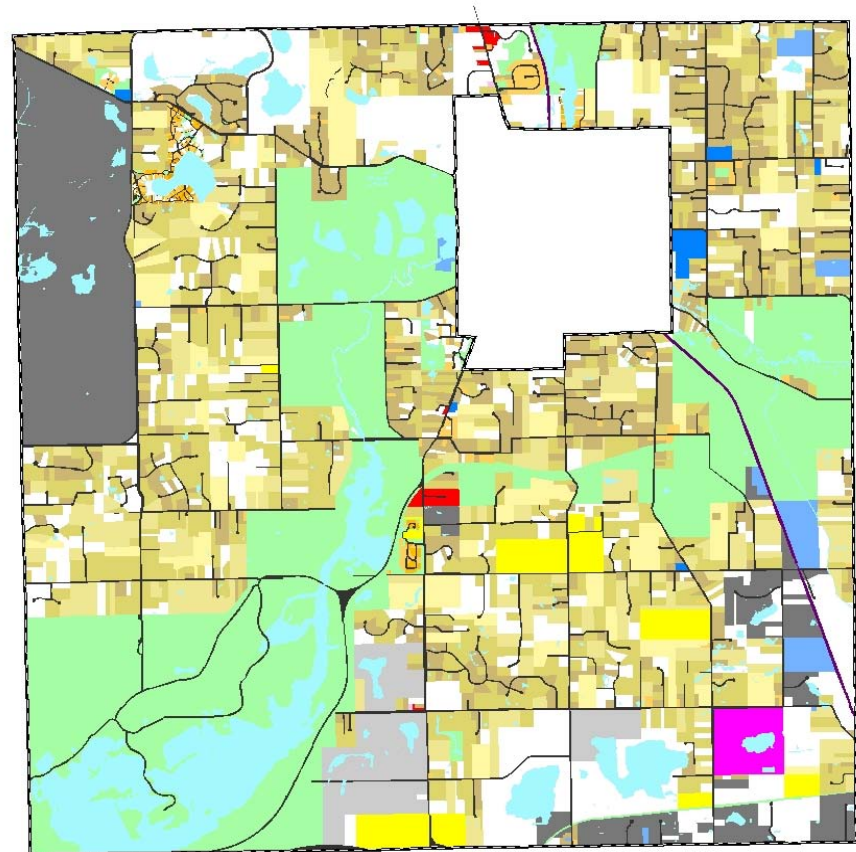
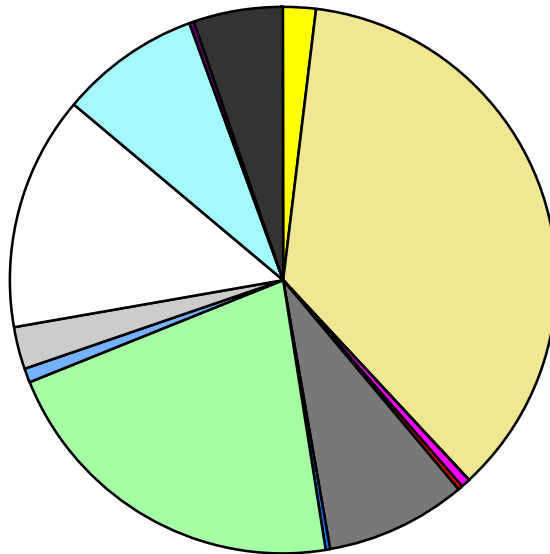


| Land Use                  | Area (ac.)      | Area (%)      | Parcels      | Parcels (%)   |
|---------------------------|-----------------|---------------|--------------|---------------|
| Agricultural              | 377.5           | 1.8%          | 10           | 0.3%          |
| Single Family Residential | 7,549.2         | 36.1%         | 2,739        | 75.5%         |
| Multiple Family           | 2.0             | 0.0%          | 2            | 0.1%          |
| Mobile Home Park          | 134.1           | 0.6%          | 2            | 0.1%          |
| Commercial/Office         | 39.8            | 0.2%          | 12           | 0.3%          |
| Industrial                | 1,765.3         | 8.4%          | 92           | 2.5%          |
| Public/Institutional      | 65.5            | 0.3%          | 6            | 0.2%          |
| Recreation/Conservation   | 4,462.0         | 21.4%         | 117          | 3.2%          |
| Transp./Utility/Comm.     | 190.3           | 0.9%          | 14           | 0.4%          |
| Extractive                | 495.1           | 2.4%          | 8            | 0.2%          |
| Vacant                    | 2,922.5         | 14.0%         | 625          | 17.2%         |
| Water                     | 1,758.0         | 8.4%          |              |               |
| Railroad Right-of-Way     | 47.5            | 0.2%          |              |               |
| Road Right-of-Way         | 1,085.2         | 5.2%          |              |               |
| <b>Total</b>              | <b>20,894.1</b> | <b>100.0%</b> | <b>3,627</b> | <b>100.0%</b> |

| Single Family By Lot Size      | Area (ac.)     | Area (%)      | Parcels      | Parcels (%)   |
|--------------------------------|----------------|---------------|--------------|---------------|
| 10 acres or greater            | 1,034.2        | 13.7%         | 68           | 2.5%          |
| 5 to 9.9 acres                 | 1,582.9        | 21.0%         | 213          | 7.8%          |
| 2.5 to 4.9 acres               | 2,764.9        | 36.6%         | 820          | 29.9%         |
| 1 to 2.4 acres                 | 1,944.5        | 25.8%         | 1,171        | 42.8%         |
| 14,000 to 43,559 sq. ft.       | 186.0          | 2.5%          | 289          | 10.6%         |
| 8,000 to 13,999 sq. ft.        | 28.7           | 0.4%          | 112          | 4.1%          |
| Less than 8,000 sq. ft.        | 8.1            | 0.1%          | 66           | 2.4%          |
| More than one unit per parcel  |                |               |              |               |
| <b>Single Family Sub-total</b> | <b>7,549.2</b> | <b>100.0%</b> | <b>2,739</b> | <b>100.0%</b> |

### Land Use by Area

- Agricultural
- Single Family Residential
- Multiple Family
- Mobile Home Park
- Commercial/Office
- Industrial
- Public/Institutional
- Recreation/Conservation
- Transp./Utility/Comm.
- Extractive
- Vacant
- Water
- Railroad Right-of-Way
- Road Right-of-Way



For more information, maps, or questions about this data, please contact the Oakland County One Stop Shop at (248) 858-0720.