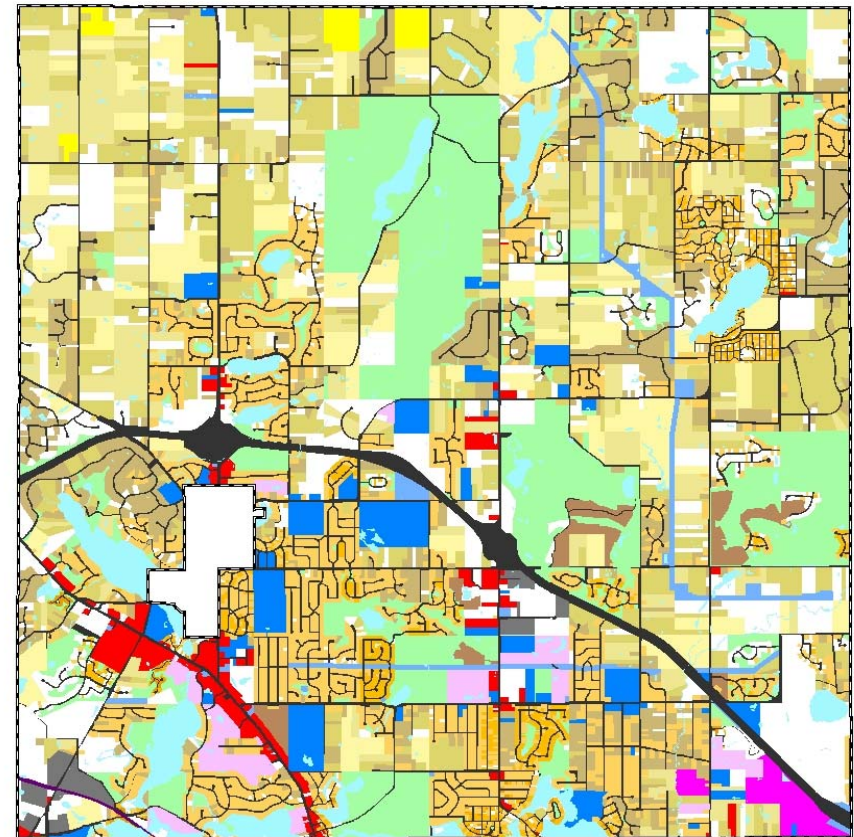
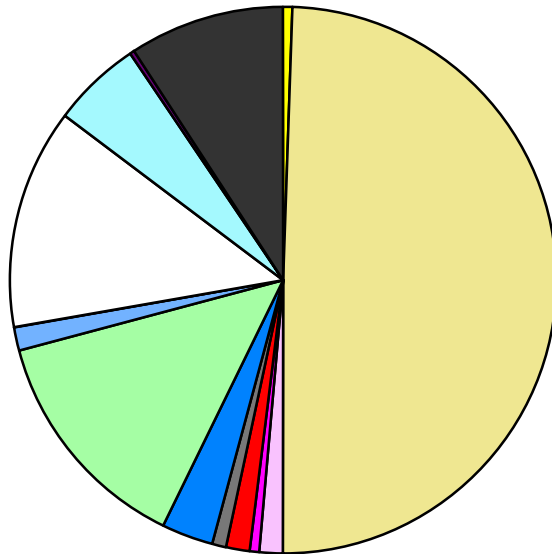


Land Use	Area (ac.)	Area (%)	Parcels	Parcels (%)
Agricultural	136.5	0.6%	10	0.1%
Single Family Residential	11,451.3	49.3%	9,791	82.6%
Multiple Family	320.1	1.4%	22	0.2%
Mobile Home Park	137.6	0.6%	3	0.0%
Commercial/Office	364.3	1.6%	202	1.7%
Industrial	137.6	0.6%	31	0.3%
Public/Institutional	717.1	3.1%	69	0.6%
Recreation/Conservation	3,208.9	13.8%	267	2.3%
Transp./Utility/Comm.	310.1	1.3%	52	0.4%
Extractive				
Vacant	3,011.8	13.0%	1,402	11.8%
Water	1,258.0	5.4%		
Railroad Right-of-Way	14.7	0.1%		
Road Right-of-Way	2,149.2	9.3%		
Total	23,217.2	100.0%	11,849	100.0%

Single Family By Lot Size	Area (ac.)	Area (%)	Parcels	Parcels (%)
10 acres or greater	1,479.6	12.9%	86	0.9%
5 to 9.9 acres	1,923.2	16.8%	252	2.6%
2.5 to 4.9 acres	2,606.7	22.8%	743	7.6%
1 to 2.4 acres	2,058.6	18.0%	1,344	13.7%
14,000 to 43,559 sq. ft.	2,755.0	24.1%	5,639	57.6%
8,000 to 13,999 sq. ft.	359.5	3.1%	1,393	14.2%
Less than 8,000 sq. ft.	40.2	0.4%	289	3.0%
More than one unit per parcel	228.7	2.0%	45	0.5%
Single Family Sub-total	11,451.3	100.0%	9,791	100.0%

Land Use by Area

- Agricultural
- Single Family Residential
- Multiple Family
- Mobile Home Park
- Commercial/Office
- Industrial
- Public/Institutional
- Recreation/Conservation
- Transp./Utility/Comm.
- Extractive
- Vacant
- Water
- Railroad Right-of-Way
- Road Right-of-Way



For more information, maps, or questions about this data, please contact the Oakland County One Stop Shop at (248) 858-0720.