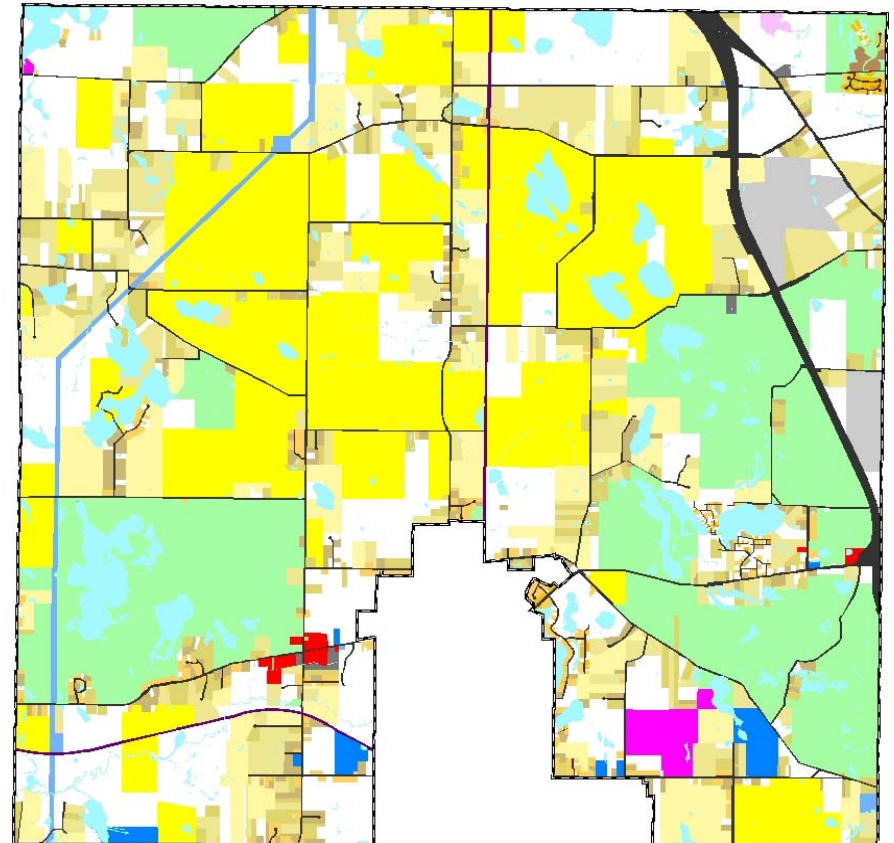
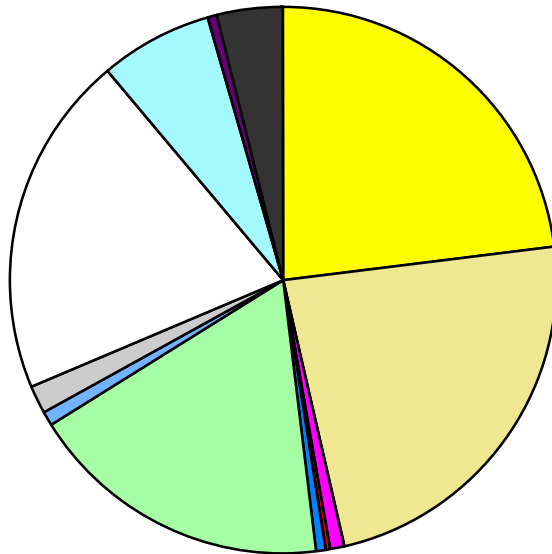


Land Use	Area (ac.)	Area (%)	Parcels	Parcels (%)
Agricultural	4,901.5	22.9%	87	4.0%
Single Family Residential	5,014.0	23.5%	1,458	66.5%
Multiple Family	16.8	0.1%	1	0.0%
Mobile Home Park	138.0	0.6%	9	0.4%
Commercial/Office	51.6	0.2%	19	0.9%
Industrial	25.6	0.1%	6	0.3%
Public/Institutional	147.4	0.7%	9	0.4%
Recreation/Conservation	3,842.5	18.0%	45	2.1%
Transp./Utility/Comm.	168.9	0.8%	16	0.7%
Extractive	330.3	1.5%	6	0.3%
Vacant	4,322.4	20.2%	537	24.5%
Water	1,467.2	6.9%		
Railroad Right-of-Way	77.9	0.4%		
Road Right-of-Way	857.3	4.0%		
Total	21,361.4	100.0%	2,193	100.0%

Single Family By Lot Size	Area (ac.)	Area (%)	Parcels	Parcels (%)
10 acres or greater	1,939.5	38.7%	96	6.6%
5 to 9.9 acres	1,455.7	29.0%	190	13.0%
2.5 to 4.9 acres	799.0	15.9%	213	14.6%
1 to 2.4 acres	456.4	9.1%	292	20.0%
14,000 to 43,559 sq. ft.	309.1	6.2%	506	34.7%
8,000 to 13,999 sq. ft.	34.7	0.7%	138	9.5%
Less than 8,000 sq. ft.	3.4	0.1%	21	1.4%
More than one unit per parcel	16.1	0.3%	2	0.1%
Single Family Sub-total	5,014.0	100.0%	1,458	100.0%

Land Use by Area

- Agricultural
- Single Family Residential
- Multiple Family
- Mobile Home Park
- Commercial/Office
- Industrial
- Public/Institutional
- Recreation/Conservation
- Transp./Utility/Comm.
- Extractive
- Vacant
- Water
- Railroad Right-of-Way
- Road Right-of-Way



For more information, maps, or questions about this data, please contact the Oakland County One Stop Shop at (248) 858-0720.